

# Let's start a conversation

Hear and discuss results from the Douglas  
County community health assessment.

and...

Put in your two cents to improve our community's health.

All are welcome!

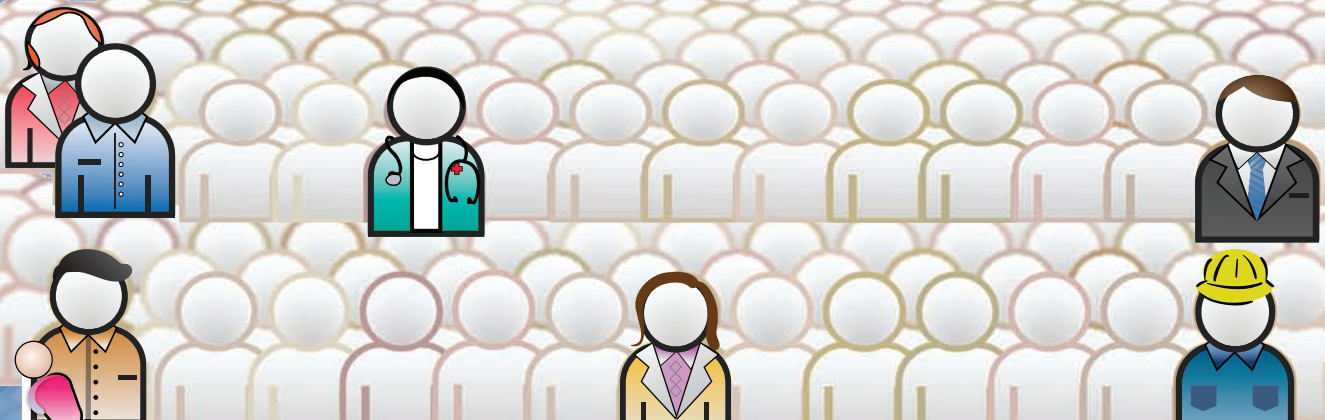
Hosted by the City of Lawrence

Wednesday, May 9, 3:30-5 p.m.

&

Thursday, May 17, 7-8:30 p.m.

Community Health Facility, 200 Maine St., Lawrence



DOUGLAS COUNTY



Community  
Health  
Improvement  
Partnership



LAWRENCE-DOUGLAS COUNTY

Health Department

[www.ldchealth.org](http://www.ldchealth.org)



City of Lawrence



WORK GROUP FOR  
COMMUNITY HEALTH  
& DEVELOPMENT

The University of Kansas