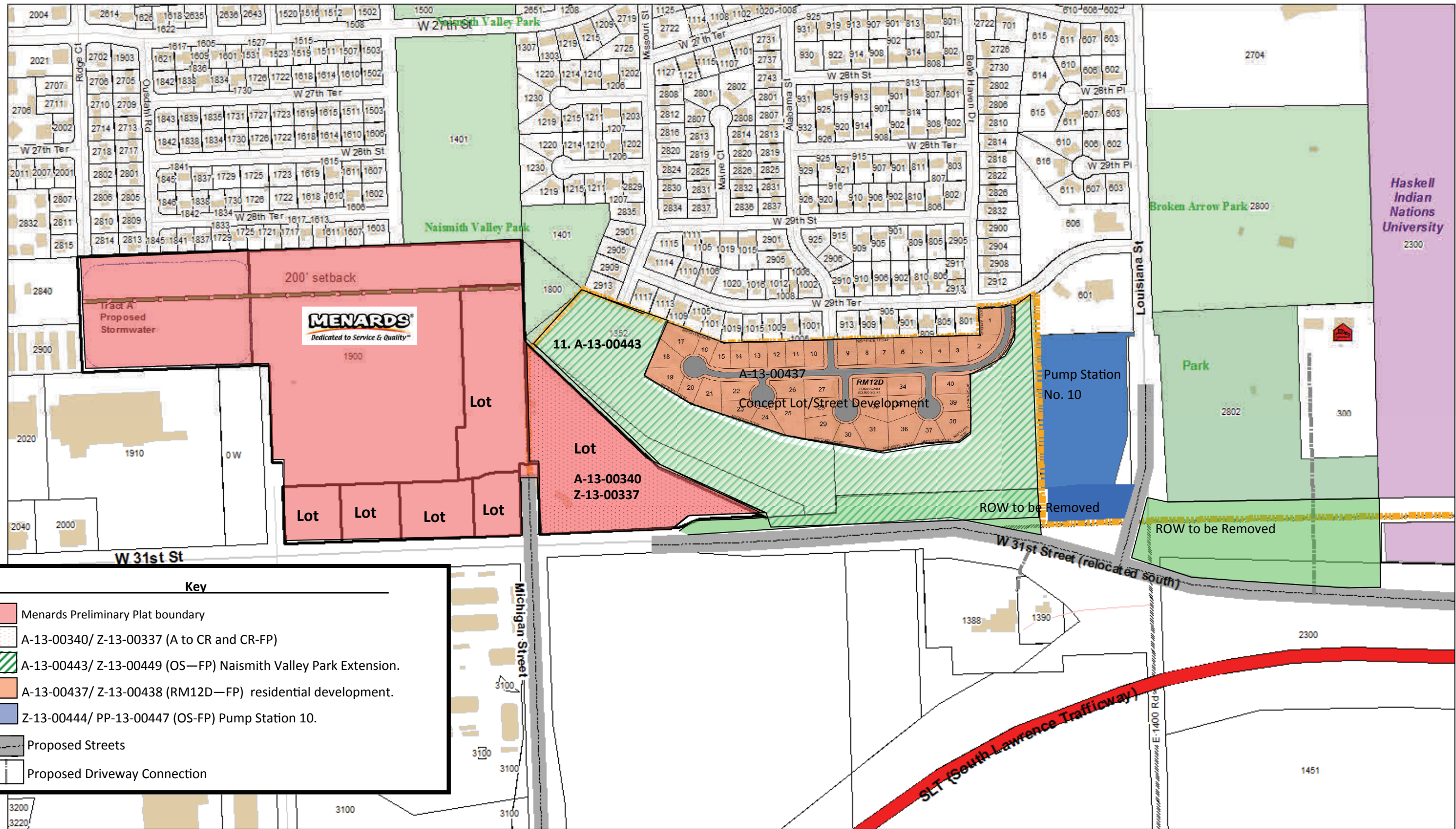


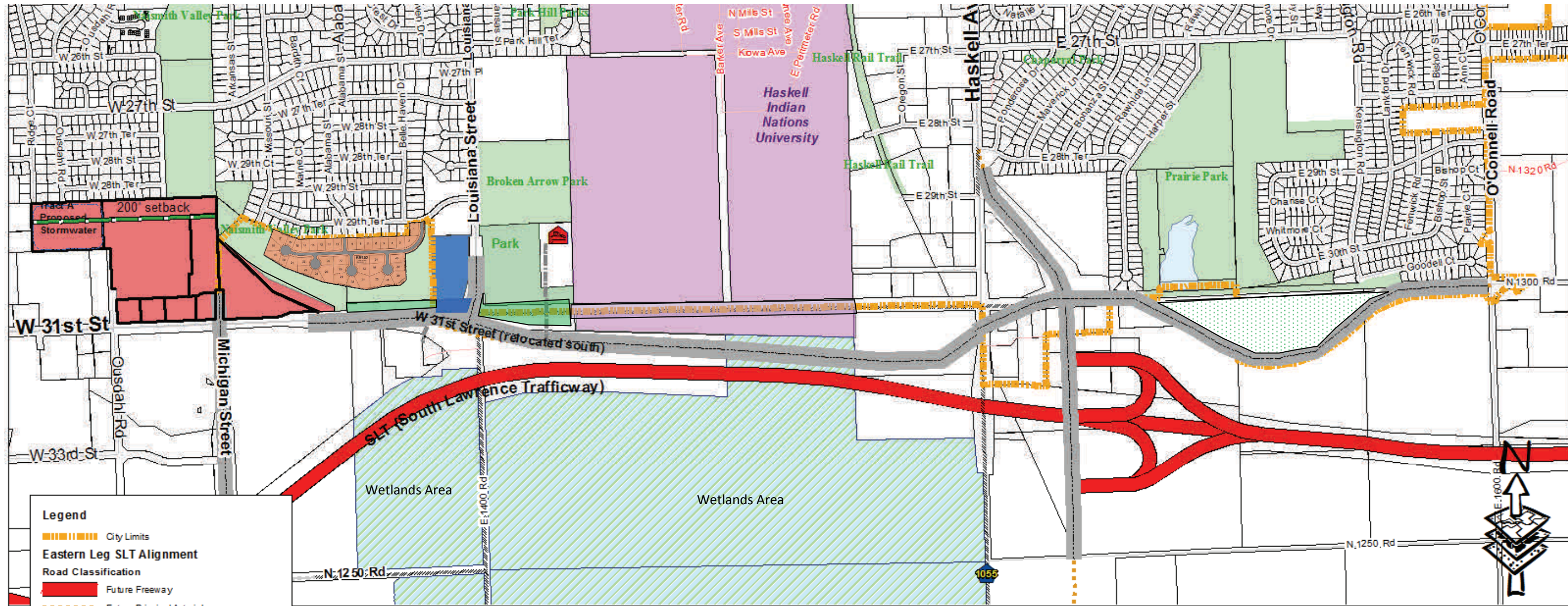
31st Street and Louisiana Street Corridor Development Requests



Key

- Menards Preliminary Plat boundary
- A-13-00340/ Z-13-00337 (A to CR and CR-FP)
- A-13-00443/ Z-13-00449 (OS-FP) Naismith Valley Park Extension.
- A-13-00437/ Z-13-00438 (RM12D-FP) residential development.
- Z-13-00444/ PP-13-00447 (OS-FP) Pump Station 10.
- Proposed Streets
- Proposed Driveway Connection

31st Street and South Lawrence Trafficway Corridor



Legend

- City Limits
- Eastern Leg SLT Alignment**
- Road Classification**
- Future Freeway
- Future Principal Arterial
- Future Minor Arterial
- Future local/rural
- Roads eradicated after completion of SLT
- Wetlands
- Menards
- Pump Station No. 10
- Universities**
- NAME**
- Haskell Indian Nations University
- University of Kansas
- Water Bodies
- City Parks**
- Classification**
- Community
- Neighborhood
- Future

- ROW to be removed and conveyed to Haskell University.
- Area recently annexed—portion not developed for 31st Street will become part of Park system.
- ROW to be removed and open space extended.