



## **Wakarusa Wastewater Treatment Plant and Conveyance System**

### **Pump Station 10 Fact Sheet**

#### **Why is this Project Essential to the Future of Lawrence?**

The 2012 Wastewater Facilities Master Plan identified Pump Station 10 as necessary to combine the wastewater flow from five existing interceptor sewers and one future interceptor sewer to serve the western and southern portions of Lawrence. The site chosen for this pump station is at the northwest corner of 31<sup>st</sup> and Louisiana Streets. The new pump station will split wastewater flow between the Kansas River Wastewater Treatment Plant and the new Wakarusa Wastewater Treatment Plant, currently under design and located on the Wakarusa River. The pump station is also being designed to accommodate future growth.

The pump station will be a state of the art facility, providing for flexibility, redundancy, and reliability of operation and transporting of wastewater flows. Although the pump station will be unmanned on a normal basis, it will be continuously monitored through the City's electronic control systems.

#### **The design and construction of the pump station addresses the following:**

**Noise** – Pump Station noise will be minimal with most mechanical equipment installed below ground level.

**Odor** – Chemical addition for odor control at the pump station and other future technologies are being designed into the current project.

**Reliability** – Multiple sources of electrical power, including the ability to utilize a generator unit, are included in the design to provide the most reliable service. The pump station will be tornado resistant to ensure continued emergency operations.

**Exterior Appearance** – Pump Station aesthetics will blend into the existing neighborhood and adjacent land uses.

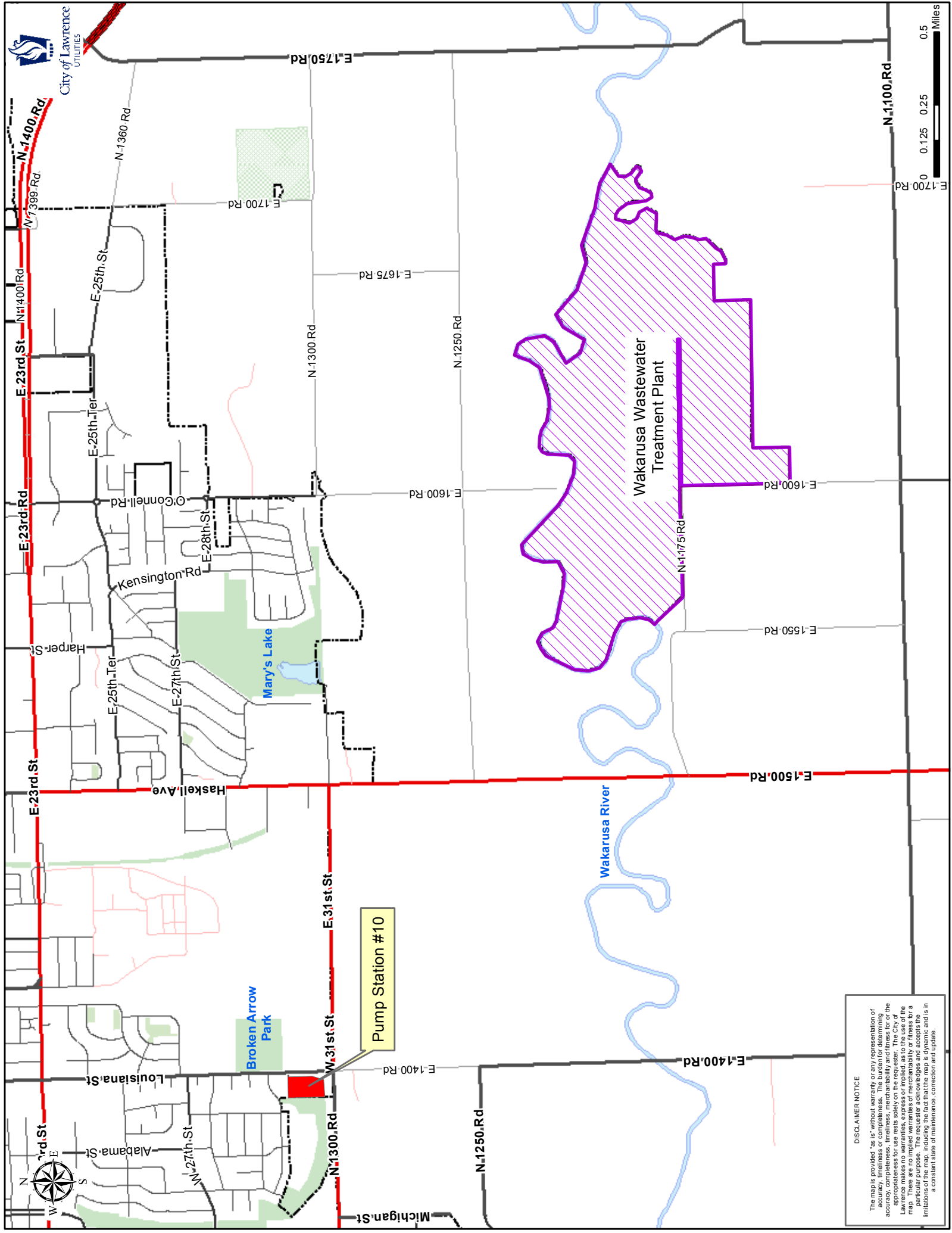
**Coordination with South Lawrence Trafficway (SLT)** – All pump station and force main design and construction activities are being coordinated carefully with the design and ongoing construction of the KDOT SLT project.

**Local Access** – Local access to Broken Arrow Park, W. 29<sup>th</sup> Terrace, and adjacent church facilities at W. 29<sup>th</sup> Terrace and Louisiana shall be maintained at all times except for short periods of time necessary to connect new underground piping for pump station operations.

**Construction Phase Impacts** – Sanitary sewer service will continue uninterrupted throughout the immediate area during construction.

**Schedule** – The Design Phase to be completed December 2014. Construction completion and startup will occur in late 2015 to early 2016.

For additional information or questions concerning this project contact Melinda Harger, P.E., Utilities Engineer, through e-mail at [mharger@lawrenceks.org](mailto:mharger@lawrenceks.org) or by phone at (785) 832-7880.



DISCLAIMER NOTICE

The map is provided "as is" without warranty or any representation of accuracy, timeliness or completeness. The burden for determining accuracy, completeness, timeliness, merchantability and fitness for the purpose is on the user. The City of Lawrence makes no warranties, express or implied, as to the use of the map. There are no implied warranties of merchantability or fitness for a particular purpose. The requester acknowledges and accepts the limitations of the map, including the fact that the map is dynamic and is in a constant state of maintenance, correction and update.