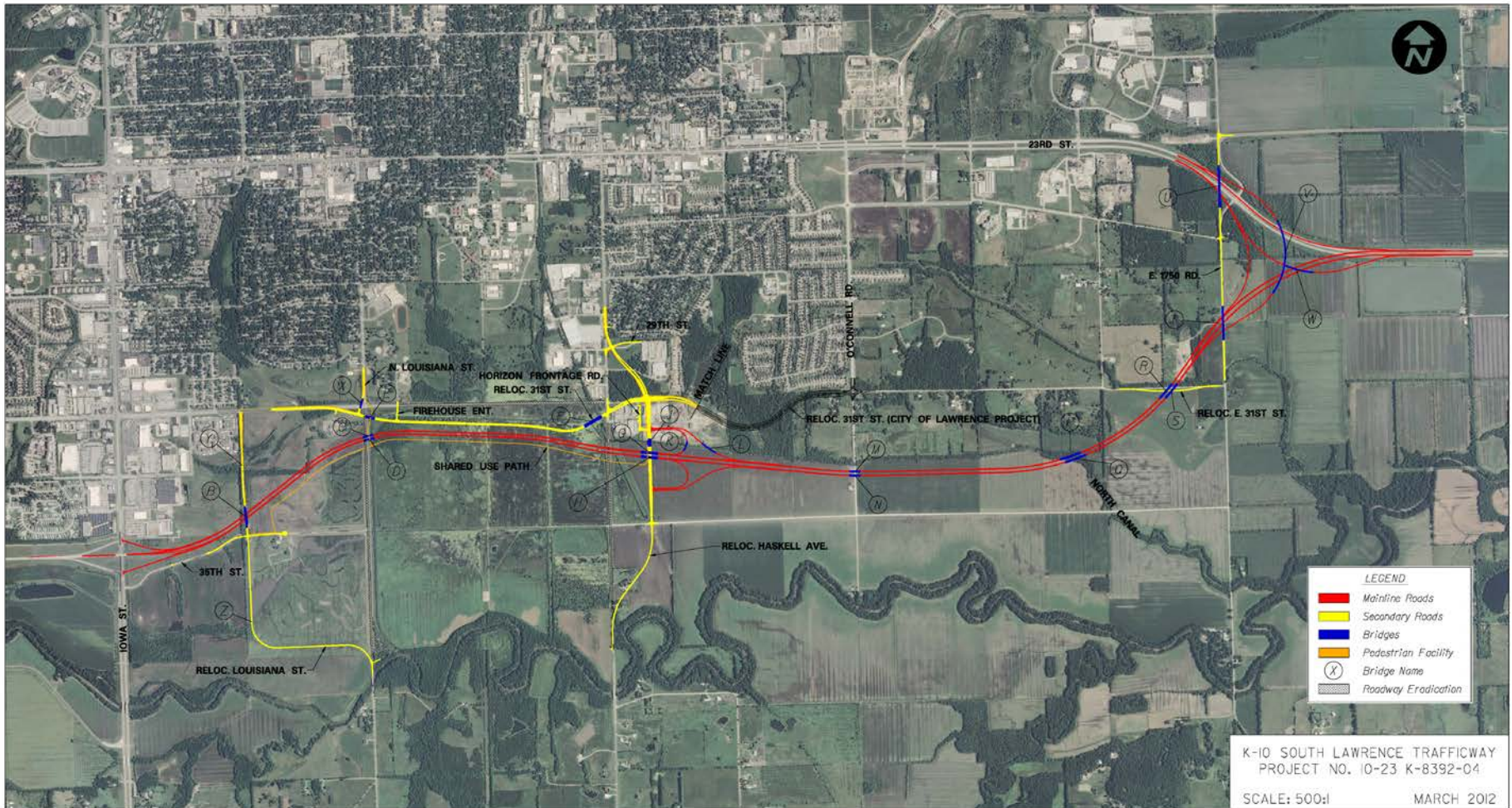


South Lawrence Trafficway (SLT)

- Let to contract Sept. 2013
 - 10-23 K 8392-04 - \$129,806,000
 - 23 U 2117-01 - \$3,914,000
 - Emery Sapp & Sons, Inc., Columbia Missouri
- Progress
 - Work started Nov. 2013
 - To date 60% complete by cost, 40% of contract time used
- Paid out to date:
 - 10-23 K 8392-04 - \$80,148,000/\$137,992,000
 - 23 U 2117-01 - \$3,954,000/\$4,451,000



LEGEND

—	Mainline Roads
—	Secondary Roads
—	Bridges
—	Pedestrian Facility
(X)	Bridge Name
	Roadway Eradication

K-10 SOUTH LAWRENCE TRAFFICWAY
 PROJECT NO. 10-23 K-8392-04
 SCALE: 500:1 MARCH 2012

Grading

- 4,000,000 cuyd of excavation work
- 620,000 sqyd of geosynthetic soil reinf.
- 2,370,000 lnft of PVD
- 323,000 lnft of stone columns
- 6,271 lnft of drainage pipe
- 12,348 lnft of storm sewer



Grading (cont)

Wetlands “Special Foundation”–

-231,000 cuyd of crushed stone fill

-516,000 sqyd of separation fabric, --

284,000 sqyd of geogrid



Bridges

24 Bridges -

- 8 "Slab"
- 10 Steel Girder
- 3 Prestressed Girder
- 3 multicell boxes

21,900 cuyd of concrete

63,300 lft of piling (12 miles)

4,468,000 lbs of reinf. Steel

6,279,000 lbs of structural steel



Paving

526,000 sqyd of concrete pavement

-25 Inmi of mainline

-5.5 Inmi of ramps

-12.9 Inmi of side streets

113,000 cuyd of concrete needed



















