



LAWRENCE CULTURAL ARTS COMMISSION
COMMUNITY ARTS GRANT APPLICATION FORM

Applicant Information:

Project Director Saralyn Reece Hardy

Project Director's Title Marilyn Stokstad Director

Name of Organization Spencer Museum of Art - University of Kansas

Address 1301 Mississippi St.

City, State, Zip Code Lawrence, KS 66045

Telephone 785.864.4710 Fax 785.864.3112 E-Mail srh@ku.edu

Project Information:

Project Title Collection Cards: Heroes Edition

Start Date May 1, 2015 End Date April 30, 2016

This project is most closely related to: Visual Arts Performing Arts Literature Media
 Other, please describe: _____

Lawrence Cultural Arts Commission Request \$ 2,000 Total Project Expenses \$ 7,281

Check should be made out to: Spencer Museum of Art - KU Endowment Association

EIN or SSN* 48-0547734

Authorizing Signatures: By my signature below, I certify that the information contained in this application packet is true, to the best of my knowledge.

Project Director's Signature *Saralyn Reece Hardy* Date 3/23/2015

Printed Name Saralyn Reece Hardy Title Marilyn Stokstad Director

Fiscal Agent's Signature *Jerome Davies* Date 3/23/2015

Printed Name Jerome Davies Title _____
Sr. Vice President for Development; Secretary

*Please provide Employer Identification Number if an organization or Social Security Number if an individual. This will be required in the event of an award. If concerned about confidentiality, leave blank and then, upon notification of an award, call Diane Stoddard at (785) 832-3413 to provide the information. Checks cannot be processed without the EIN or SSN.

The Spencer Museum of Art
“Collection Cards: Heroes Edition”

Project Description

Goals & Vision: During summer 2015, the Spencer Museum of Art, the Lawrence Public Library, and the Watkins Museum of History will lead community members in an exploration of the “hero” in art, history, and literature, in conjunction with the Library’s 2015 summer reading program theme “Every Hero Has a Story.” Each institution will contribute staff expertise and rich collections to engage audiences in a thoughtful examination of what it means to be heroic, using examples from well-known works of art and literature and figures from Lawrence and Kansas history. Programming at each institution, designed individually and collaboratively, will be connected through a series of Collection Cards, featuring images of objects in the Spencer and Watkins museums’ collections that address the concept of “heroism.”

The “Heroes” trading cards will be the latest edition in the Spencer Museum’s Collection Cards initiative. Developed by Spencer educators in 2014, the Collection Cards represent a unique tool for sparking and sustaining curiosity about the arts. The trading cards complement arts education programs at the Spencer and in Douglas County classrooms and expand engagement with art collections beyond the Museum and classroom walls. Each card features a secret code and a url (<http://collectioncards.ku.edu/>) that directs users to the Collection Cards website, where they can enter the code to find out more about the work of art, the artist/maker, and other related information. Visit the website and use secret code “1960.0009” to learn about a work included in the first edition of the Spencer’s Collection Cards, developed with support from the Douglas County Community Foundation.

The Spencer Museum will work with the Watkins and the Public Library to create Collection Cards: “Heroes” edition. In conjunction with a series of educational programs, the cards will create opportunities for residents of Lawrence and surrounding communities to explore the concept of “heroism” through local collections of art and culture. Together, we will prompt audiences to consider what it means to be a hero or heroine, incorporating heroic individuals of varying backgrounds and abilities to move beyond the stereotypical notion of a hero as athletic daredevils and adventure-seekers. “Heroes” programs will also encourage community members to contemplate notions of civic engagement and leadership, and to recognize strengths in themselves and others.

Partner Organizations: With the Spencer Museum of Art’s main facility closed beginning spring 2015 for a major interior renovation, this project serves as an important outlet for the Spencer to continue providing arts experiences for its audiences and for keeping the community engaged with its collections. Each year, the Spencer offers educational activities for youth and families that serve thousands of Lawrence residents. Outreach programs at the Lawrence Public Library and the Watkins Museum will allow the Spencer new ways to serve and expand its audiences through art making activities, lectures and workshops, and artist-led programs.

This collaboration also represents an important opportunity to further develop the strong relationships between the Museum, the Watkins, and the Library. Together, the Museum and

Library have offered the Lawrence community a broad range of art activities, book discussions, lectures, workshops, and film screenings. Recent collaborations have included Art Musings on *The Handmaid's Tale*: Bring Your Own Book Club tours; Art Detectives and Thieves; and Science, Art Optics, and Illusions programs. The Spencer and the Watkins have worked together on numerous Final Friday programs and are eager for this opportunity to expand our relationship through the "Heroes" trading cards and related programs.

Target Audiences: Through this collaboration, these three community-based cultural institutions will provide a series of thematic programs that will benefit approximately 1000 residents of Lawrence and surrounding communities throughout summer 2015. These programs are designed to cultivate broader engagement with the arts and Lawrence's cultural resources. Programs will specifically target the Museums' existing audiences and participants in the Library's annual summer reading program. Each year, the Lawrence Public Library offers Summer in the City, a summer-long program that promotes reading for youth and adults. Collectively, the Spencer, the Watkins, and the Library will foster a deeper investigation of the summer reading program theme and generate crossover audience participation for the hundreds of community members who attend programs at all three institutions each year.

Engagement Strategies: The Spencer, the Watkins, and the Public Library have developed a series of public programs that delve into notions of "heroism" from the perspectives of art, history, and literature (described further below). These programs will be enhanced with trading cards that depict images of objects in the Museum's collection, building on the Spencer's "Collection Card" initiative. The Spencer has created previous thematic editions of the cards, featuring works from its collection related to plants, people, places, and animals, with support from the Douglas County Community Foundation. A recent award from the Kansas Creative Arts Industries Commission will support a new card edition of Spencer objects related to science, technology, engineering, and math. Community members will be encouraged to collect and trade cards, and to think about "curating" their trading card collection, deepening their understanding of how works of art and culture are collected, exhibited, and interpreted.

In collaboration with the Library and the Watkins, the SMA educators and graphic designer will create an edition of "Heroes" cards featuring works from the Spencer's and the Watkins' collections that depict or are related to individuals who might be interpreted as heroic. In selecting Spencer works, staff will focus on works by Lawrence artists and historical figures, such as Roger Shimomura, whose works delve into issues of race and social justice in American history, and Amos Adams Lawrence, abolitionist and namesake of Lawrence, Kansas. Images of prospective works are included in the supporting materials.

Objects from the Watkins collection will relate to historic figures and events in Lawrence's history, such as a pike John Brown had made for the attack on Harper's Ferry. All featured works will have a connection to the city of Lawrence or the state of Kansas. As with previous volumes of the trading cards, audience members will be guided to the Collection Card website and be prompted to enter a secret code found on the trading card. In addition to unlocking information about the collection object, the website will also direct users to related resources at the Lawrence Public Library.

Collaborative Programs: The “Heroes” trading cards will be incorporated into programs occurring at the Lawrence Public Library and in the community throughout summer 2015, beginning with the Summer in the City kickoff on May 30th at the Library. The June 8th program, Art Heroes Exploratorium (also at the Library), will focus on the trading cards, discussing heroic artists, such as Kansas-born photographer Gordon Parks, who captured on film images of racial segregation and socio-economic disparity in America. The Spencer will provide two Art Cart programs (a multigenerational art-making activity station typically offered on weekends in the SMA galleries); these will take place at the Library on June 13th and July 25th and will use the trading cards to expand on the art making activities. Spencer Museum and Library staff will continue to explore the development of additional programs that will employ the trading cards and may include local artists and historians. The Watkins Museum and the Spencer are currently developing programs that will take place at the Watkins and incorporate the trading cards. These programs might center around the Watkins’ successful summertime program on old fashioned games.

Sustainability: Spencer Museum educators continue to assess and refine the Collection Cards initiative as we integrate the cards into the Spencer’s new and existing programs and into collaborations with community partners. Ongoing assessment of the cards will shape their use during summer 2015 and beyond. The Spencer Museum of Art will continue to employ the “Heroes” trading cards with their outreach programs beyond the summer. During fall 2015, SMA staff will integrate the cards into the annual USD 497 4th grade program, “Art of Kansas and the Region.” Following the reopening of the Museum in spring 2016, the “Heroes” cards will complement a new tour program on heroes and villains recently developed by one of the Museum’s student volunteers. In addition, the Spencer will continue to produce new editions of trading cards in relation to future exhibitions and programs at the Museum.

Schedule of Events

April – May 2015	Create trading cards based on works in the collection of Spencer Museum of Art
May 30, 2015	“Every Hero Has a Story,” summer reading program kick-off event, at LPL
June 8, 2015	Art Heroes program, at LPL
June 13, 2015	Art Cart “The Art of the Book” program, at LPL
June or July 2015	“Heroes” program(s) at Watkins
July 25, 2015	Art Cart “Constructing Characters” program, at LPL
June – August 2015	Various programs throughout Lawrence in conjunction with “Every Hero Has a Story” summer reading program
TBD	Lawrence artist program, at LPL
TBD	Lawrence historian program, at LPL
Fall 2015	Integrate cards into USD 497 and Spencer Museum of Art 4 th grade “Art of Kansas and the Region” Museum Schools Program



**LAWRENCE CULTURAL ARTS COMMISSION
COMMUNITY ARTS GRANT BUDGET FORM**

Budget Categories	LCAC Grant Request	Requestor's Contribution	3 rd -Party Cash Match	3 rd -Party In-Kind Match	Total
1. Personnel		\$5,281			
2. Fees and Services					
3. Rental Fees					
4. Travel					
5. Marketing Expenses	\$300				
6. Materials Expenses	\$1,700				
7. Operating Expenses					
8. Other Expenses					
Total Project Expenses	\$2,000	\$5,281			\$7,281

Note: As you write your budget justification, be sure to address the amount of your matching support, funding source(s), and how the match reflects community interest. Your budget should correspond with the plan laid-out in your project description.

BUDGET JUSTIFICATION

1. **Personnel** Spencer Museum of Art will provide \$5,281 in matching funds to support salaries and fringe associated with the programming and production costs for the "Collection Cards: Heroes Edition" project. Funds will support Amanda Martin-Hamon, Director of Community Engagement (80 hours - \$2,177); Jeffrey McKee, Graphic Designer (40 hours - \$1,106); William Hopkins, Web Programmer (40 hours - \$1,298), and Kristina Walker, Director of Education (20 hours - \$701).
2. **Fees and Services**
3. **Rental Fees**
4. **Travel**
5. **Marketing Expenses** We request \$300 from Lawrence Cultural Arts Commission to support outreach activities and materials, which will be distributed by mail to patrons of the Spencer Museum, Watkins Museum, and Lawrence Public Library, and also disseminated through flyers and handbills posted throughout the community.
6. **Materials Expenses** We request \$1,500 from the Lawrence Cultural Arts Commission to support the creation of 500 sets of cards; each set will include 15 different cards (7,500 cards total). Additionally, we request \$200 for packaging materials, which will include envelopes for the cards, printed instructions, and a specially designed rubber stamp which will be used to mark each set of cards with a "Collection Cards: Heroes Edition" logo.
7. **Operating Expenses**
8. **Other Expenses**

SARALYN REECE HARDY

1301 Mississippi St.
Lawrence, Kansas 66045
Spencer Museum of Art
Business: 785-864-4710
Residence: 785-840-7060
srh@ku.edu

EMPLOYMENT

Director, Spencer Museum of Art, University of Kansas, Lawrence, KS. March 2005-present.
Director, Salina Art Center, Salina, KS. May 2002-March 2005 and 1986-1999.
Director, Museums and Visual Arts, National Endowment for the Arts, Washington, D.C. September 1999-April 2002.
Arts Programming Coordinator, Salina Arts and Humanities Commission, Salina, KS. 1981-1986.
Smoky Hill River Festival Coordinator, Salina Arts and Humanities Commission, Salina, KS. 1980-1981.
Program Coordinator *Musing in Museums: Exploring Human Values in an Art Museum*, National Endowment for the Humanities Project, Spencer Museum of Art, University of Kansas, Lawrence, KS. 1977-1979.

EDUCATION

American Studies, American Art, M.A., University of Kansas, Lawrence, KS, 1994
Thesis Committee: Dr. Charles Eldredge, History of Art, Dr. Dennis Domer, Architecture, Dr. Barry Shank, American Studies

AWARDS

The Pitch, Kansas City Best Of List, Best Museum Director, 2007
Make a Difference Award, University of Kansas Student Designated, 2007
Distinguished Service Award, National Endowment of the Arts, 2001
Awarded by Chairman Bill Ivey (one of several)
Kansas Governor's Art Award for arts advocate, Kansas Arts Commission, 1995
Nominated by Frank Shaw and Scott Jost, artists
Woman of Achievement Award for non-profit leadership, Salina YWCA, 1993
Nominated by the Salina Art Center Board
Museum Management Institute, co-sponsored by the American Federation of Arts and the J. Paul Getty Trust; University of California, Berkeley, CA, (merit scholarship), 1990

ADVISORY COMMITTEES AND BOARDS

University of Kansas Reaccreditation Committee: Mission and Integrity, 2013-present
Garden of Eden Board of Directors, 2011-present
Visual Art Panelist, National Endowment for the Arts, Washington, DC, 2013
Vice President (Treasurer), Board of Trustees, Association of Art Museum Directors, 2010-2013
Engaging Scholarship with Public Service Working Group, University Strategic Planning Committee, University of Kansas, 2010
Committee, Stakeholder Group for the development of a university-wide faculty activity reporting system, University of Kansas, 2010
University Scholarly Achievement Award Committee, University of Kansas, 2010
Museum Studies Curriculum Review Committee, University of Kansas, 2010
Board of Directors, Lawrence Chamber of Commerce, 2009-2013
MuseumLab, through the Cultural Policy Center, University of Chicago, 2008-2010
University of Kansas Fine Arts Dean Search Committee, 2008
Working for Kansas Task Force, Office of the Chancellor, University of Kansas, 2008-2011
KU/Getty Campus Conservation Steering Committee, 2006-present
Hall Center's Faculty Seminar, Globalization Steering Committee, University of Kansas, 2007-2009
University of Kansas Historic Preservation Master Plan Steering Committee, 2006-2012
Diversity Working Group, University of Kansas, 2005-2006
Honors Program Co-curricular Committee, University of Kansas, 2005-2010

Emily Taylor Women's Resource Center, University of Kansas, 2005-2010
Imagination and Place Committee, Lawrence Art Center, 2005-2013
School of Liberal Arts and Sciences Advisory Board, University of Kansas, 2004-2011
School of Continuing Education, University of Kansas, 2005-2006
Advisory Committee, Getty Leadership Institute, Los Angeles, CA, 2002-2006
Museum Loan Network Advisory Panel, Boston, MA, 2002-2006
Nominating Committee, College Art Association, New York, NY, 2003

LECTURES, TEACHING, AND SEMINARS (*Selected*)

Reading Wright through Images and Text, Making the (Richard) Wright Connection Teaching Institute, University of Kansas, 2010
University of Kansas Alumni Association Kansas Honors Program, guest speaker, 2009 and 2010
Ulrich Salon Circle, guest lecture, Ulrich Art Museum, Wichita State University, Wichita, 2009
College Arts Association Annual Conference, "Recasting the Archive: Reclaiming the Studio," Los Angeles, 2009
Globalization Seminar, "Designing in a Global Environment: Adjustments and Translations," panel organizer and moderator, Hall Center for the Humanities, University of Kansas, 2009
Fresher Soil: the Ecology of the Art Museum, International Conference on Beyond Thoreau: American and International Response to Nature, Beijing, China, 2008
Changing face of art and opportunities in Art in a globally warming environment, New Product Management Class, guest lecturer, Fall 2007
Kansas Honors Program Tutorial, "Art, Environment & Society," University of Kansas, Fall 2007
Kansas Culture and Art Seminar, "Kansas Architecture: Coronado Heights", University of Kansas, 2006
University Women's Club, guest speaker, University of Kansas, 2006
Women Philanthropists of KU, guest speaker, University of Kansas, 2006
Twentieth-Century Group, guest speaker, 2006
Lawrence Rotary Club, guest speaker, Lawrence, KS, 2006
Women's Recognition Program, keynote speaker, Emily Taylor Resource Center, 2006
WomenSpeak, lecturer, sponsored by *One Hundred Good Women*, Lawrence Art Center, 2005
Honors Program Convocation, keynote speaker, 2005
Kansas City Art Institute Graduation, commencement address speaker, 2005
Contemporary Art, Salina Art Center Board of Directors class, monthly 1994-2005
Museum Management Institute, advisor and observer, Getty Leadership Institute, The Getty Center, Los Angeles, 2004-2006
Museum Leaders: The Next Generation, faculty mentor, Getty Leadership Institute, The Getty Center, Los Angeles, 2004-2006
One Hundred Years of Architectural Education for Kansas, Art and Architecture of Kansas Centennial Symposium, Kansas State University, Manhattan, KS, 2003
Civic Engagement, speaker for planning symposium, Walker Art Center, Minneapolis, MN, 2003

PANELIST, JUROR, AND REVIEWER

Reviewer, NEA, 2013
Panelist, IMLS Museums for America, 2009
Panel Organizer and Moderator, *Globalization Seminar: Designing in a Global Environment: Adjustments and Translations*, 2009
Bush Foundation Reviewer, North Dakota Museum of Art Site Visit, 2008
Selection Committee, Council of New Orleans Public Art Competition, made possible through a grant from the Joan Mitchell Foundation, 2008-2013
Panelist, ArtsKC Fund, Arts Council of Metropolitan Kansas City, 2008
Panelist, *Rules of Engagement: A Roundtable Discussion on Public Art*, Planning Charette, 2007
Panelist, *Transformative Marketing: Health, Wealth, and the Arts*, Tuck School of Business, Dartmouth College, Hanover, New Hampshire, 2007
Panelist, *Globalization Seminar*, Hall Center for the Humanities, University of Kansas, 2006
Panelist, *Art & Science: Two Cultures*, Hall Center for the Humanities, University of Kansas, 2006
Juror, *Creative Capital Foundation*, Arts Council of Metropolitan Kansas City and Charlotte Street Foundation, 2005-2011
Bush Artist Fellowships, Bush Foundation, Minneapolis MN, 2004

Amanda Martin-Hamon

785-393-9920

akmartin@ku.edu

EDUCATION

M.A., History of Art University of Kansas 1999
Minor Art Museum Education Lawrence, KS 66045

B.A., History of Art University of Kansas 1995
Lawrence, KS 66045

EXPERIENCE

ASSOCIATE DIRECTOR OF COMMUNITY

ENGAGEMENT 2012-present

DOCENT EDUCATOR 2008-2012

PUBLIC PROGRAMS COORDINATOR 2006-2012

Spencer Museum of Art

University of Kansas

LAWRENCE, KS 66045

Direct development and implementation of comprehensive strategy for community partnerships and public and educational programs with adults and schools that strengthen the Museum's position as a site for personal learning and civic engagement. Manage and implement docent and tour program that supports positive volunteer and visitor experiences, fostering an accessible museum learning environment. Engage in research and scholarly activities, including collections research, exhibition development, and museum pedagogy.

INTERIM DIRECTOR 2005-2006

ASSISTANT DIRECTOR 2002-2006

Mulvane Art Museum

Washburn University

TOPEKA, KS 66621

Managed all daily operations, including exhibition and collection planning, project coordination, program design and implementation, promotion and outreach, and resource management and development. Developed and implemented programs, events, and outreach in order to build museum audiences and university and community partnerships and create an accessible space for personal learning and civic engagement. Conceived and implemented public relations and marketing strategies, including television, radio, print, and web.

EDUCATOR, TOURS AND AUDIENCE SERVICES 2001-2002

DOCENT PROGRAM COORDINATOR 1999-2000

Spencer Museum of Art

University of Kansas

Lawrence, KS 66045

Managed museum docent, tours program, and Museum/Schools Program. Planned and implemented public programs and outreach and developed educational resource for audiences of all ages in order to support accessible and engaging museum experiences and cultivate university and community partnerships.

AWARD

KAEA Outstanding Art Educator in Museum Education

2001

PUBLICATIONS

(2012). "Pharmacy Students in the Art Museum: Lessons from an Unlikely Collaboration," by Amanda Martin-Hamon, Barbara Woods, and Pat Villeneuve, *Academic Museums: Exhibitions and Education*. Stefanie Jandl and Mark Gold (eds.), MuseumsEtc., pp. 462-489.

(2007). "At the Heart of It: Museums and Place-Based Study in Rural Communities" by Pat Villeneuve and Amanda Martin-Hamon, *Place-Based Education and the Museum*, Guest Eds. Mark A. Graham and Sharon R. Gray, *Journal of Museum Education*, 32 (3).

(2006). "University in the Art Museum: a Model for Museum-Faculty Collaboration" by Pat Villeneuve, Amanda Martin-Hamon, and Kristina E. Mitchell, *Art Education*, 59 (1), 12-17.

(2002). "A Choice of Weapons: Photographs of Gordon Parks" by Kristina E. Mitchell, Amanda Martin-Hamon, and Elissa Anderson, *Art Education*, 55 (2), 25-32.

(1999). "Narrative Devices in Art" by Kristina E. Mitchell, Amanda Martin-Hamon, and Maura Coleman-Murray, *Art Education*, 52 (5), 25-32.

CONFERENCE PRESENTATIONS

Gallery Interpretives in the 21st Century Museum, and Maximizing the Multi-disciplinary, Collaborative Potential of the Museum/Schools Program, NAEA 2012

Ear for Art: Cell Phone Audio Tours In and Outside the Museum, and Contributing to the Creative Campus: The Role of University Museums and Art Departments, NAEA 2011

Issues Forum: Action Research, NAEA 2010

University in the Art Museum: A Faculty-Training Model and Reaching Out from Your Museum's Website, NAEA 2003

Creating an Online Teacher Resource, NAEA 2002

Interdisciplinary Learning Opportunities that Motivate Adult Visits, NAEA 2000

Narrative Devices in Art, Art and History in the Murals of John Stewart Curry and Wayne Wildcat, and Issues in Managing Your Docent Program, KAEA 1999

Designing Effective Adult Gallery Guides and How to Get Visitors Off Your Web Site and Into the Art Museum, NAEA 1999

Jeffrey McKee Graphic Designer

CV

nocommie@gmail.com
(602) 748 7589

Positions

Spencer Museum of Art
Graphic Designer
October '14– current

VML
Senior Art Director
August '13– October '14

Studio lke
Founder/Graphic Designer
June '10– October '13

Fervor Creative
Graphic Designer
June '09–June '10

Tomko Design
Senior Graphic Designer
August '08–December '08

Catapult Strategic Design
Senior Graphic Designer
November '06–June '08

Moses Anshell
Graphic Designer
November '04–December '05

E.B. Lane
Graphic Designer
December '01–October '03

Formal

Art Institute of Phoenix
BA Graphic Design

University of Central Oklahoma
Graphic Design

St. Gregory's Liberal Arts
Fine Art

—

Freelance clients have included

Arizona Biltmore
Arizona Cardinals
Arizona Convention
& Visitors Bureau
Arizona Lottery
Campbell Fisher Design
Catapult Strategic Design
Chapter Two Communications
Del Webb
E.B. Lane
Fervor Creative
The Lavidge Company
Moses Anshell
National Airlines
Off Madison Avenue
Omni Mount
Payless Shoes
Phoenix Suns
Poisoned Pen
Salon Pearl
Santy Advertising
Sugar Creative
Tomko Design

—

(References available upon request)

—

William Hopkins

1716 Charise Ct. • Lawrence, Kansas 66046 • 785-760-4573 • wmhopk@gmail.com

Profile

- I've used the following technologies for over 6 years to develop websites and web apps
 - PHP
 - HTML
 - Javascript
 - MySQL
- In my current position I've created web apps for the KU School of Pharmacy using those technologies.
 - http://apps.pharmacy.deptsec.ku.edu/elective_registration/
 - other sites need authentication to enter
- I'm also managing several sites that I build using Drupal (some are listed below)
 - pharm.ku.edu,
 - medchem.ku.edu

Programming Languages

PHP

CSS

HTML

Javascript (including jquery)

Database Platforms

MySQL

Software

Design

Illustrator – web graphics, logos

Indesign – various print layouts including journals, business cards, brochures etc.

Photoshop – color correct images, fix images, web graphics

Web development

Netbeans

Appcelerator Titanium

Dreamweaver

Productivity

MS Office Suite

Career Development

Web Developer

9/2007 - Present University of Kansas, Lawrence, Kansas

- Manage and maintain multiple websites for the School of Pharmacy and its departments
- Create multiple web apps for School of Pharmacy specific purposes
- Manage other digital assets (signage, digital directory, etc.)
- Train co-workers in the use of various office productivity software (Acrobat Pro, Word, Excel) and other software as needed
- Serve as web developer for the KU School of Pharmacy and web advisor for the schools research departments
- Instruct co-workers in the use of the content management system

William Hopkins

1716 Charise Ct. • Lawrence, Kansas 66046 • 785-760-4573 • wmhopk@gmail.com

Web Developer

6/2005 - 9/2007 Freelance Work, Lawrence, Kansas

www.upostit365.com (no longer active)

- PHP was used primarily to interact with database backend
- PHP was also used to create and authentication system
- MySQL database used to store classified ad information and customer information
- Dreamweaver used as HTML, CSS and PHP editor
- integrated site with Paypal payment api

www.thelawrencechurchofchrist.org (recently changed to blogging platform site)

- Brochure website
- Hand coded HTML
- CSS used for positioning and styling

Graphic Designer

9/2004 - 9/2007 Allen Press, Inc., Lawrence, Kansas

- Created design pieces (posters, advertisements, etc.) for print.
- Redesigned journals to update their "look".
- Redesign journal covers for the same purpose.
- Use Applescript and Javascript to script design applications.
 - Used Applescript to reformat xml generated by InDesign.
 - Used Javascript to create and auto layout script for images in InDesign.
- Designed the online face of our company newsletter FrontMatter.

Pre-press Tech

6/2001 - 9/2004 Allen Press, Inc., Lawrence, Kansas

- Perform flight checking on customer files (text and graphics) to ensure that journals are ready for press and produced to customer standards.
- Responsible for approximately 90% of pre-press work for the PC platform and assist in pre-press work for the Mac.
- Completed projects that involved scripting of applications such as Adobe InDesign and Acrobat to automate tedious tasks.
- Created fillable forms in Acrobat that assist customers in ordering reprints of journals.

Graphic Designer

1/1999 - 1/2001 Kinko's Inc., Misison, Kansas

- Creation of various print design projects: company logos, posters, menus, catalogs etc. Initiated our first web design project.
- Project management: tracking and proofing projects, training new employees, and troubleshooting.

Graphic Designer/Web Designer

4/1997 - 6/1998 University of Kansas-Dole Building, Lawrence, Kansas

- Created print and web design work for several grant run projects in the Special Education Department of K. U. Created website for the Personnel Prep Project.
- Maintained and updated the site along with several other sites within the same department.
- Responsible for designing all printed material (brochures, forms, business cards, etc.).

Kristina Mitchell-Walker

729 Missouri Street
Lawrence, KS 66044

785-550-1988

kemitch@ku.edu

EDUCATION

M.A., Art Museum Education	University of Kansas Lawrence, KS 66045	1996
B.F.A., History of Art	University of Kansas Lawrence, KS 66045	1991
Direct Exchange Scholarship, History of Art	University of Essex Colchester, England	1989

EXPERIENCE

DIRECTOR OF EDUCATION	2004-present
Spencer Museum of Art University of Kansas Lawrence, KS 66045	

Direct museum education department. Maintain the philosophical and conceptual orientation of the department and provide expertise to run programs. Oversee the planning and coordinating of SMA educational public programs. Supervise the public programs coordinator, docent program coordinator, youth and family outreach coordinator, and education intern. Co-supervise the SMA Student Advisory Board. Serve on the Management team. Direct exhibition planning meetings. Attend curatorial and staff meetings. Attend KU connections meetings. Develop budget for exhibition programming and education department operations. Write the education component for the Kansas Arts Commission grant and the IMLS grant. Oversee the children’s art appreciation classes. Assist in the editing of SMA labels and exhibition brochures. Coordinated the Fall and Spring University in the Art Museum programs. Provide programming information to Director of Communications.

ACTING CURATOR OF EDUCATION	2003-2004 & 2000-2001
EDUCATOR, PROGRAMS AND MUSEUM SERVICES	2001-2003
EDUCATION SERVICES COORDINATOR	1997-2000

Spencer Museum of Art
University of Kansas
Lawrence, KS 66045

Collaborated with the curator of education and objects curators to plan, develop, promote and evaluate public educational programs for special exhibitions and for the museum’s permanent collection. Scheduled, coordinated, and supervised lectures, gallery talks, film series, music performances, symposia, and other events. Hired art teachers, develop and schedule summer children’s art appreciation classes. Worked with education department to develop activities for

annual Family Day. Assisted education department in writing monthly children’s gallery activity and develop take-home activities. Developed and coordinated the KU Perspectives program to bring in university professors to speak about exhibitions from their perspectives. Collaborated with university departments to expand regular exhibition programming. Coordinated events at the museum for student groups such as Hispanic American Leadership Organization, International Student Association, and Asian American Student Union.

DOCENT AND TOUR OFFICE ASSISTANT

1996-1997

Nelson-Atkins Museum of Art
 Education Department
 4525 Oak Street
 Kansas City, MO 64111

Assisted docent coordinator with preparing and presenting materials for docent training. Scheduled use of museum facilities and booked lecturers for the continuing education and docent training programs. Wrote and developed educational materials.

PUBLICATIONS

(2006). “University in the Art Museum: A Model for Museum-Faculty Collaboration” by Kristina E. Mitchell, Amanda Martin-Hamon, and Pat Villeneuve, *Art Education*, 59 (1), 12-17.

(2002). “A Choice of Weapons: Photographs of Gordon Parks” by Kristina E. Mitchell, Amanda Martin-Hamon, and Elissa Anderson, *Art Education*, 55 (2), 25-32.

(1999). “Narrative Devices in Art” by Kristina E. Mitchell, Amanda Martin-Hamon, and Maura Coleman-Murray, *Art Education*, 52 (5), 25-32.

PROFESSIONAL PRESENTATIONS & AWARD

“University in the Art Museum: A Faculty-Training Model” (co-presenter); 2003
 “Reaching Out from Your Museum’s Website”
 National Art Education Association 43rd Annual Convention

“Creating an Online Teacher Resource” (co-presenter) 2002
 National Art Education Association 42st Annual Convention

Awarded KAEA’s Outstanding Art Educator in Museum Education 2000-01

“Including the Visitor’s Voice” (co-presenter) 2001
 National Art Education Association 41th Annual Convention

“Narrative Devices in Art” (co-presenter) 1999
 Kansas Art Education Association conference on multi-faceted art education;
 Spencer Museum of Art, Lawrence, KS

“How to Get Visitors Off Your Web Site and Into the Art Museum” (co-presenter) 1999
 National Art Education Association 39th Annual Convention

Bradley J. Allen

2433 Free State Ct ● Lawrence, KS 66044 ● (785) 215-0067 ● brad@lawrencepubliclibrary.org

Education

University of Wisconsin-Madison

M.A. in Afro-American Studies, 2002

Emphasis in study of funk and soul music

University of Illinois at Urbana-Champaign

M.S. in Library and Information Science, 2000

University of Kansas, Lawrence, Kansas

B.A. in American Studies and Psychology (summa cum laude), 1997

Experience

Lawrence (Kansas) Public Library

May 2012 – present

Executive Director

- Direct all aspects of a newly renovated, 65,000 square foot public library in a thriving college town
- Led the library through a major expansion and renovation project
- Reorganized the entire library service delivery structure
- Developed a new salary structure and increased staff salaries and wages significantly

Everett (Washington) Public Library

March 2010 – April 2012

Branch Manager & Programming Coordinator

- Oversaw the daily operations of a busy branch library serving a diverse, multilingual population
- As branch manager, led a strategic reorganization of the building layout that increased visibility and circulation of teen collections, increased overall browsing abilities for library customers, and opened up more space for people to use the library's free wi-fi
- As a member of our collection management team, helped to forge a plan to consolidate selection duties, improve weeding, increase circulation, and spend materials budgets more wisely
- Directly supervised and appraised the performance of two librarians and a circulation supervisor
- As music selector, increased check out of the music CD collection systemwide by nearly 40% through careful weeding of less popular music and expansion of genres gaining popularity in our community (Latin and Christian music in particular)

Topeka and Shawnee County (Kansas) Public Library

July 2006 – February 2010

Adult Services Supervisor

- Supervised and appraised the performance of twenty-five professional librarians
- Provided recommendations on overall collection development (books, music, movies)
- Developed, organized, and publicized author events using direct marketing techniques to reach people beyond standard broadcast methods
- Explored and developed implementation strategies for new technologies like podcasts, screencasts, and videos that help reach customers in online environments
- Helped coordinate and promote library initiatives including the library's participation in the National Endowment of the Arts' [The Big Read](#) community-wide reading project
- Instituted instant messaging “chat” reference to better serve customers visiting the library's Digital Branch

Bradley J. Allen

2433 Free State Ct ● Lawrence, KS 66044 ● (785) 215-0067 ● brad@lawrencepubliclibrary.org

Los Angeles Public Library

August 2002 – July 2006

Librarian

- Worked as a Children’s Librarian and Young Adult Librarian at two diverse, busy neighborhood branch libraries as well as the Social Sciences, Philosophy, and Religion Department of the Central Library
- Managed a portion of a branch library budget, assisted in overall collection development, and expanded rock, jazz, and blues music collections
- Led a project to create a “rediscovered classics” section for a neighborhood branch
- Initiated and executed a project to promote independent music to teens involving communication with records labels like Sub Pop and Saddle Creek to seek promotional items to create a visual merchandising display in the teen area
- Supervised employees and assessed performance
- Organized community outreach programs

Memberships

American Library Association

Public Library Association

Kansas Library Association

Kristin Soper

129 Pinecone Dr.

Lawrence, KS 66046

785-331-8781

ksoper007@gmail.com

Work Experience-Lawrence Public Library

Events and Programming Coordinator

March 2014 to Present

- Planning library author talks and community events
- Organizing adult events on the print and website calendars
- Partnering with local organizations for events & cross promotional materials

Goals accomplished: Assisted in coordinating the move from our temporary location to our newly renovated library. Assisted in planning and executing our opening day festivities which included the ribbon cutting ceremony, scheduling musical performances.

Technical Services Assistant from February 2010 to March 2014

- Processing and mending AV materials
- Sorting damaged items & purging items from the collection
- Ordering and managing department supplies using Microsoft Access
- Creating item records for added copies across all collections

Goals accomplished: completion of movie genre relabeling project, video game relocation project, audiobook nonfiction reclassification

Circulation Page/Desk Clerk from March 2009 to February 2010

- Accurately shelving materials, shelf reading, shifting collections, customer service
- Checking in and sorting items, cleaning DVDs, shelving reserve materials

Education

University of Kansas

August 2000-December 2003

BA in English

GPA: 3.3

Steven J. Nowak
3449 Aldrich Street
Lawrence, KS 66047
785-841-3201 (home), 785-841-4109 (work)
sj-nowak@sbcglobal.net

SUMMARY: Experienced museum professional with strengths in strategic planning, evaluation and assessment, exhibition design and development, outreach and educational programming, and collections management and interpretation. Experience in personnel management and leadership, team-building, budgeting, public speaking, public relations, project management, historic preservation, grant writing, developing community partnerships, and fostering collaboration. Excellent organizational, writing, interpersonal, and communication skills.

Broad-based experience in museums, with knowledge of museum registration and collections management; conservation; and collections storage and art handling techniques. Familiar with the general requirements and standards of archives development, organization, and management. Academic background in art history and American history, literature, and material culture, with a specialization in American painting and decorative arts.

EXPERIENCE:

Douglas County Historical Society

Executive Director

March 2011-present

- Direct operations of the Watkins Museum of History, including management of staff and interns, oversight of collections and archives, development of public programs and exhibitions, fundraising, public relations, budget development and oversight, and facility management. Efforts to engage the public increased attendance 30% annually for three years
- Facilitate operation of the Douglas County Historical Society, including development of organizational strategy and goals with the Board of Directors, supporting the work of Board committees, management of membership database, renewals, and communication efforts, and direction of a campaign to increase individual and corporate memberships.
- Develop a permanent exhibit, including facilitation of the exhibit advisory team, creation of exhibit concepts and interpretive content, and direction of the work of exhibit designer and outside contractors; the first half of the exhibit on the museum's second floor opened in August 2013, the third floor is currently in planning.

Toledo Museum of Art

March 1988-September 2010

Director, Education and Community Outreach

(July 2004-September 2010)

and Curatorial Consultant, Decorative Arts

- Directed Education and Community Outreach Branch, including planning, goal setting, budget development, and staff evaluation, development, and hiring.
- Supervised development and implementation of Docent/school tours, teacher resources, art classes, family/public programs, outreach programs, the community gallery, interpretive projects, exhibitions (2004-2009), and glass studios (beginning 2009), facilitating collaboration with curators and marketing.
- Member of the Museum's Senior Leadership Team. Participated in organizational management, strategic planning, and assessment. Member of the Exhibition Review Team.
- Established community partnerships, developed outreach initiatives, expanded Community Gallery program, introduced community art projects, established High School Art Council, facilitated collaborative programs with university faculty, and developed internship program.

Toledo Museum of Art (continued)

Audience Development Leader/Strategic Planning Manager (July 1999-July 2004)
and Curatorial Consultant, Decorative Arts

- Served as a member of the Museum's leadership group, participated in planning/budgeting.
- Identified opportunities and established audience development strategies and goals.
- Procured, prepared, and interpreted marketing research, audience profile/satisfaction data, and organizational performance information for use in planning and evaluation.
- Created and managed processes to develop the Museum's vision and strategic plan.
- Reinterpreted and reinstalled a portion of the Museum's European decorative arts collection.

Marketing Research Coordinator/Organizational Development Leader (July 1995-July 1999)

- Established and managed system for ongoing audience research and evaluation. Developed exhibition surveys, tracked and analyzed results, and prepared reports on findings and recommendations. Researched and evaluated the Museum's potential target audiences.
- Established the Museum's external Community Advisory Group.
- Outlined strategy and managed implementation of organization-wide process analysis.
- Managed marketing work group. Coached cross-functional task forces investigating issues concerning exhibition selection and production, technology, and staff compensation.

Assistant/Associate Registrar (March 1988-July 1995)

- Managed registration duties for temporary exhibitions. Supervised installation and packing of *Contemporary Crafts and the Saxe Collection*, organized by TMA, at off-site venues.
- Served as director of a project to develop the Museum archives and records management program to professional standards, including pursuing funding through private and federal grants. Supervised a Museum-wide records survey.
- Coordinated photography for a Museum collection handbook and a major exhibition catalogue. Initiated use of computer spreadsheet to manage photography budget.
- Developed a computer database to provide basic catalogue information on works of art on display. Prepared a users' guide and provided training/ongoing instruction.

Toledo Museum of Art, Special Projects:

Engagement Manager, Marketing Process Redesign Project (July-December 1995)

- Managed relationship with consultants from McKinsey & Co., Inc. Developed a procedure to study and redesign the Museum's marketing and audience development process. Served as leader of the project's implementation team.
- Helped prepare and present the results of the project to the Board of Trustees and staff.

Team Leader, Visitor Experience Action Team (January 1994-January 1995)

- Led the Museum's first Process Action Team, which examined and improved the visitor experience and explored organizational development principles in a non-profit setting.
- Coordinated preparation and implementation of an employee insight survey and helped develop a plan to address issues raised. With consultants, planned programs for increasing staff participation in the development of a new Museum mission statement.

Washington University Gallery of Art

August 1986-February 1988

Assistant Curator/Registrar

- Carried out registration and collections management responsibilities for the permanent collection, loans, and exhibitions. Redesigned registration forms. Prepared an inventory of the art collections at the University House and faculty club.
- Developed a computerized collections management system, including hardware/software selection, organizing database structure, preparing instruction handbook, and training staff.
- Assisted in the planning of gallery renovations and the storage of the collection during renovation.
- Organized an exhibition, *Images of Aristocrats and Republicans: Portraits in the Collection of Washington University*, including preparation of object labels and introductory material.
- Managed the print study room when open to the public and supervised viewing by students and visiting scholars. Completed an inventory and reorganization of the print collection.

FREELANCE CONSULTING WORK:

Monroe County Labor History Museum

April 2010-May 2012

- Develop and lead process for establishing inaugural exhibition goals and themes.
- Create exhibition plan, including content, interpretive techniques, and space requirements.
- Facilitate Exhibition Development Team meetings and plan evaluation.

Libbey House Foundation

May 2006-August 2010

- Develop exhibition themes and identify content/interpretation
- Outline educational activities and potential programs.

Diocese of Toledo, Parish Vitality Project

August 2003-March 2005

- Developed parish evaluation survey and implementation guidelines.
- Established process and tools for assessing and reporting survey results.
- Trained peer advisors to facilitate evaluation, assessment, and communication in parishes.

EDUCATION:

Bachelor of Arts, magna cum laude—Washington University, St. Louis, Missouri, May 1985,
major: Art History.

Masters Program in American Studies—The College of William and Mary, Williamsburg, VA,
August 1985-May 1986.

EXHIBITIONS CURATED/DESIGNED:

Kansas River Kings: Life on the Kaw, Watkins Museum of History, January 25-April 20, 2013

More than a Game: Basketball and Community Spirit, Watkins Museum of History, opened March 30, 2012

Knowledge Grows: Student Experiences in the Smart Choices Garden, Watkins Museum of History, February 24-June 29, 2012

It Happened on Mass Street: 150 Years in Lawrence, Watkins Museum of History, August 11, 2011-April 14, 2012

The Spirit of Creativity: A TMA High School Art Council Exhibition, Toledo Museum of Art Community Gallery, May 22-July 19, 2009

Collecting at Winterthur: Henry Francis DuPont's American Vision, Toledo Museum of Art, May 24-September 7, 2008

Mummies to Monet: The Libbeys Collect, Toledo Museum of Art, February 1-April 6, 2008

From the Archives: A Look at the Libbeys, Toledo Museum of Art, February 29-April 13, 2008

Foundations of Faith: Building Toledo's Holy Rosary Cathedral, Toledo Museum of Art, October 19, 2007-January 20, 2008

Crate and Borrow: How Art Travels, Toledo Museum of Art, June 22-September 30, 2007

Persona/non Persona: Portraits without Faces (contributing curator), Toledo Museum of Art, December 2, 2005-February 26, 2006

Vive La France: Sèvres Porcelain in the 1800s, Toledo Museum of Art, March 4-June 12, 2005

Printed Plates: English Transferware, Toledo Museum of Art, September 17, 2004-February 13, 2005

The Unseen Art of TMA: What's in the Vaults and Why, (contributing curator), Toledo Museum of Art, September 9, 2004-January 2, 2005

The Libbey Punch Bowl: Celebrating 100 Years, Toledo Museum of Art, April 30-July 25, 2004

Images of Aristocrats and Republicans: Portraits in the Collection of Washington University, Washington University Gallery of Art, spring, 1987

PROFESSIONAL ACTIVITIES/HONORS:

Instructor, University of Kansas, *Principles and Practices of Museum Collections Management*, Spring 2013, Spring 2014; *Special Topic: Museum Audience Development*, Spring 2014

Member, Local Planning Committee, Kansas Museums Association Annual Meeting, 2013

Peer Reviewer, Freedom's Frontier National Heritage Area Interpretive Grant Program, 2013-present

Partner, Freedom's Frontier National Heritage Area, 2011-present

Workshop participant, *Inspiring Visitor Participation*, University of Michigan Museum of Art, September 2010

Member, Toledo School for the Arts Career and Technical Advisory Committee, 2007-present

Panelist, Michigan Council for Arts and Cultural Affairs, Anchor Grant Program, 2005-06

Member, Brookwood Center for the Arts Advisory Board, Toledo Area Metroparks, 2004-05

Instructor, University of Toledo, *American and European Decorative Arts*, Fall 2003; *The American Scene, 1700-1865*, Fall 2006

Member, Mayor's Strategic Planning Task Force for Arts and Culture (Toledo), 2003

Session Co-chair, *They're Everywhere: Exploring the Range of Ethical Issues in Museums*, Ohio Museums Association Annual Conference, April 2003

Panelist, *How to Attract New Audiences to Your Historical Society*, Northwest Ohio Regional Meeting of the Ohio Association of Historical Societies and Museums, March 2000

Session chair, *Navigating the Seas of Change*, Midwest Museums Conference Annual Meeting, September 1997

Nominee, Toledo Jaycees Twenty Under Forty Leadership Award, 1996, 1997

Speaker at AAM Human Resources Seminar, *The Human Dimension in Times of Change*, June 1996

Recipient, Toledo Museum of Art George W. Stevens Award, for outstanding employee, 1994

Session chair, *Future of the Past: Archives and Records Management in a Collecting Institution*, Midwest Museums Conference Annual Meeting, October 1993

St. Louis Area Registrars, member of Executive Steering Committee, 1987

REFERENCES: Available upon request

Abby Magariel

abbymagariel@gmail.com • 7327 Rosewood Drive., Prairie Village, KS 66208 • 913-461-5786

Education

University of Kansas, Lawrence, KS

2006-2008 M.A., Museum Studies

- Graduated with Honors

Coe College, Cedar Rapids, IA

2000-2004 B.A., American Studies, Minors in Writing and History

- Graduated Cum Laude with College Honors

Experience

Watkins Museum of History | 1047 Massachusetts Street, Lawrence, KS

Education & Programs Coordinator **2011 – present**

- Plan and execute public programming for the Watkins
- Create educational material on local history for families and schools
- Maintain museum's social media profile
- Apply for grants to support new museum initiatives
- Work with director and curator on new museum projects and exhibits
- Collaborate with other community organizations on special projects
- Supervise education interns and volunteers

Kansas Historical Society | Topeka, KS

Tour Coordinator/Curriculum Writer **2007 – 2012**

- Worked with teachers and groups to arrange content-appropriate visits and tours
- Wrote complete curriculum and compiled materials for new Educational Resource Trunk
- Wrote and edited content for *Read Kansas* classroom lessons and new museum tours
- Supervised part-time Museum Teachers

Mount Vernon Hotel Museum | New York, NY

William Randolph Hurst Fellow **2007**

- Completed initial stages of New York Humanities Council grant
- Provided thematic school and drop-in tours of historic house museum
- Developed activities for and supervised week-long summer day camp

Abby Magariel



KU Natural History Museum | Lawrence, KS

Curatorial Assistant, Herpetological Collection **2006 – 2007**

- Processed incoming/outgoing loans; trained in alcohol packing
- Maintained order in 300,000+ specimen collection using Specify database

KU Department of Communication Studies | Lawrence, KS

Administrative Assistant **2004 – 2005**

- Provided office support for faculty and graduate teaching assistants
- Supervised three undergraduate student assistants

Coe College Writing Center | Cedar Rapids, IA

Writing Consultant **2001 – 2004**

- Conducted one-on-one editing/tutoring peer conferences with students from all disciplines
- Organized events for staff, faculty, visiting writers and international students

Activities

- Lawrence Civic Choir Board of Directors, travel, reading, cooking

References

Steve Nowak, Director, Watkins Museum of History

snowak@watkinsmuseum.org 785-841-4109

Mary Madden, Museum and Education Director, Kansas Historical Society

mmadden@kshs.org 785-272-8681 x417

Deborah O'Neill, Director of Education, Mount Vernon Hotel Museum

d.oneill@mvhm.org 212-838-6878

John Simmons, Museologica (formerly of KUNHM Herpetology Department)

Simmons.johne@gmail.com 308-681-5708

23 March 2015

Lawrence Cultural Arts Commission
6 East 6th Street
Lawrence, KS 66044

Dear Lawrence Cultural Arts Commission:

Thank you for the opportunity to submit a proposal to the Lawrence Cultural Arts Commission's Community Grants program to support the "Collection Cards: Heroes Edition" project. During summer 2015, the Spencer Museum of Art (SMA) will work closely with the Lawrence Public Library and Watkins Museum of History to offer residents of Lawrence and surrounding communities a series of events and activities that will prompt them to consider what it means to be a hero, using examples from art, literature, and local and regional history. With the support of the Lawrence Cultural Arts Commission, we will create a series of trading cards for incorporation into the programming, which will feature works from the SMA and Watkins Museum collections that relate to concepts of heroism and that depict iconic heroes from Lawrence and the region.

On behalf of the Spencer Museum of Art I confirm the Museum's commitment of \$5,281 in matching funds outlined in the project budget. The Museum will cover costs associated with staff salaries for Director of Community Engagement Amanda Martin-Hamon (\$2,177), Director of Education Kristina Walker (\$701), Graphic Designer Jeffrey McKee (\$1,106), and Web Programmer William Hopkins (\$1,298).

Once again, I thank you for your consideration of our proposal for "Collection Cards: Heroes Edition." This meaningful project will engage the local community with art of Kansas and encourage a thoughtful dialogue on the qualities and actions of heroic individuals. Should you have any questions or comments, I invite you to be in touch with me at the information below.

Sincerely,



Saralyn Reece Hardy
Marilyn Stokstad Director
The Helen Foresman Spencer Museum of Art
srh@ku.edu | 785.864.4710



17 March 2015

Saralyn Reece Hardy
Marilyn Stokstad Director
Spencer Museum of Art
1301 Mississippi St.
Lawrence, KS 66045

Dear Director Reece Hardy,

I am pleased to offer my full support to the Spencer Museum of Art's proposal to the Lawrence Cultural Arts Commission to support the creation of a series of "Heroes" trading cards featuring images of works of art in the Museum's collection. These cards will be used to promote, enrich, and connect summer programs for youth and families at the Lawrence Public Library and at other community organizations. The Library is delighted to partner with the Spencer to include these exciting visual components in Summer in the City programming. Each year, the Library organizes a thematic reading program that keeps kids and adults reading all summer long. In 2015, the Summer in the City theme is "Every Hero Has a Story." Through programs, prizes, and swag, Summer in the City gets children excited about reading and keeps older readers coming back to the Library.

This summer, we are thrilled to be partnering with the Spencer Museum of Art to incorporate programs that integrate the "Heroes" trading cards. We look forward to working with the Museum to provide an opportunity to enhance and expand the story of heroes to visual art and culture. The trading cards will be used with programs throughout the summer, beginning with the Summer in the City kickoff event on May 30th. The cards will also feature prominently in collaborative public programs that will be held at the Library, including: Art Heroes on June 8th, Art Cart programs on June 13th and July 25th, and the possibility for other programs with local artists and historians.

On behalf of the staff of the Lawrence Public Library, allow me to express my enthusiasm for this opportunity to work with the staff at the Spencer Museum of Art to incorporate visual art and culture into our summer reading program. The "Heroes" trading cards will broaden how our audiences engage with the Library and the Museum, and expand the conversation about what it means to be a hero.

Sincerely,

Brad Allen
Director
Lawrence Public Library

Douglas County Historical Society

1047 Massachusetts Lawrence, KS 66044-2923

Phone 785-841-4109 Fax 787-841-9547

www.watkinsmuseum.org

March 17, 2015

Saralyn Reece Hardy
Marilyn Stokstad Director
Spencer Museum of Art
1301 Mississippi St.
Lawrence, KS 66045

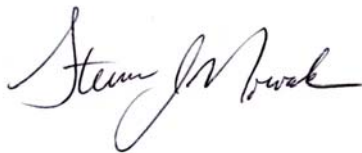
Dear Director Reece Hardy,

On behalf of the Watkins Museum of History, I offer my support for the Spencer Museum of Art's application to the Lawrence Cultural Arts Commission. The proposed Heroes trading cards will be a vibrant and exciting way to engage the community with the museum's collections and public programs this summer. We are pleased to have this opportunity to work with both the staff at the Spencer Museum and the Lawrence Public Library to prompt our audiences, young and old, to consider the meanings of heroism.

For this project, the Watkins will select objects from its collection that will be featured on the Heroes trading cards. We will choose objects that will stimulate conversations about individuals in Lawrence's history who might be perceived as heroic. Our staff will work with the Spencer to explore the possibility of integrating the trading cards into activities taking place at the Watkins in summer 2015, which may include our popular Summer Games Series.

We look forward to collaborating with the Spencer Museum of Art to develop this series of trading cards and prompting our community to connect with the important art and historical collections we steward.

Sincerely,

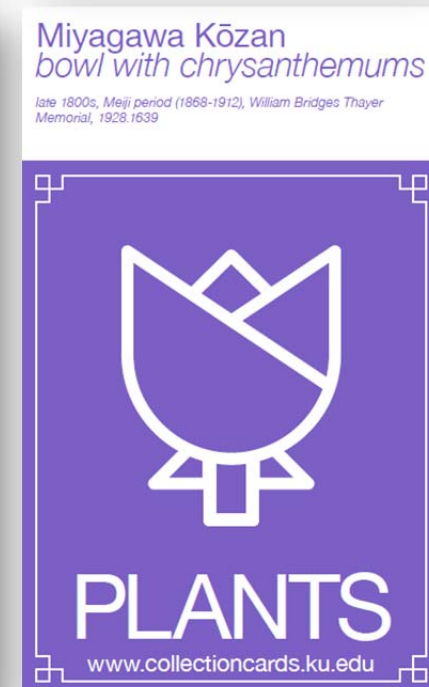
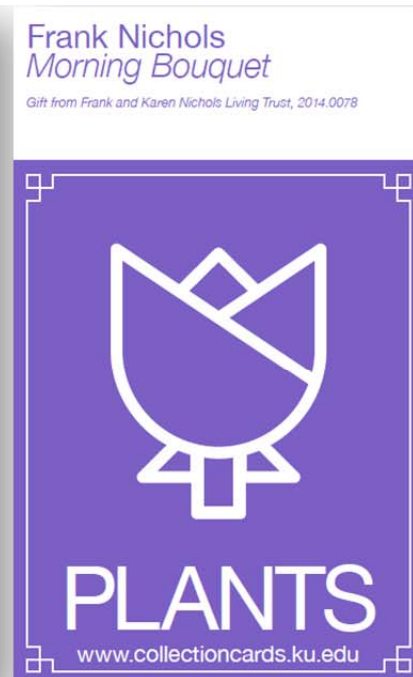
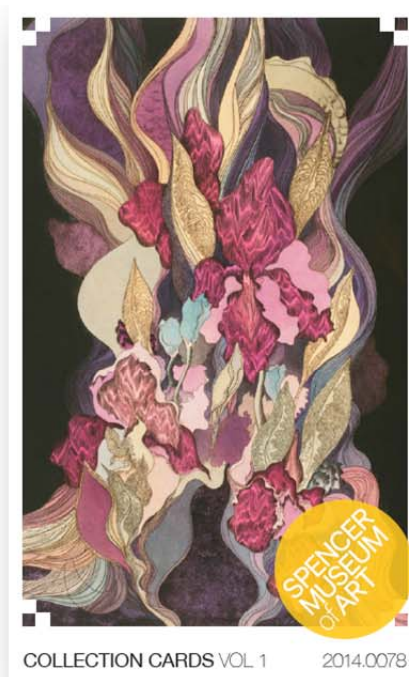


Steven J. Nowak
Executive Director

Spencer Museum of Art | Support Materials

Examples of Collection Cards

The following images depict seven examples from Volume 1 of Spencer Museum of Art Collection Cards, created in 2014. The first edition included 60 works from the Museum's collection that aligned with four themes: people, places, plants, and animals. The cards measure 3.5 x 5.75 inches, allowing collectors to store cards in 4 x 6 inch photo albums. Each card features a full-color image of a work in the SMA collection with information about the object, and a secret code associated with that specific image. The reverse side depicts the theme with which that work is associated. The secret code can be entered on the SMA website to unlock exciting information about the work of art (artist information, videos, audio, etc.). The Collection Card website continues to be enhanced, with more information about the works added continually.



COLLECTION CARDS VOL 1 1988.0067

SPENCER MUSEUM OF ART

Roger Shimomura
Dinner Conversation with Nancy
1983, Gift of the artist in memory of Nancy Anne Zimmerman, 1988.0067

PEOPLE

www.collectioncards.ku.edu

COLLECTION CARDS VOL 1 2007.2754

SPENCER MUSEUM OF ART

Australian Aboriginal peoples
bark painting depicting a coiled snake
late 1800s-1968, Gift of James A. Sleeper, 2007.2754

ANIMALS

www.collectioncards.ku.edu

COLLECTION CARDS VOL 1 1960.0009

SPENCER MUSEUM OF ART

John Steuart Curry
John Brown
1939, Gift of Senator August W. Lauterbach, 1960.0009

PEOPLE

www.collectioncards.ku.edu

COLLECTION CARDS VOL 1 2012.0061

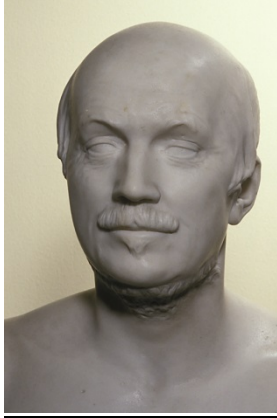
SPENCER MUSEUM OF ART

Terry Evans
Field Museum, Drawer of Bluebirds, various dates
2000, Museum purchase: R. Charles and Mary Margaret Clevenger Art Acquisition Fund, 2012.0061

ANIMALS

www.collectioncards.ku.edu

Spencer Museum of Art | Support Materials
Prospective SMA Works for Collection Cards: Heroes Edition



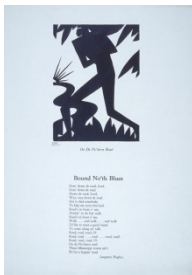
Henry Dexter, 1806-1876
 Bust of Amos Adams Lawrence,
 circa 1871-1876
 Gift of Amos Lawrence, 1878; 0000.1693

Amos Adams Lawrence is the namesake of Lawrence, KS. Lawrence was an Eastern abolitionist that provided funding to the Emigrant Aid Society to help them settle in Kansas and make it a Free State.



Gordon Parks
 1912-2006
 Auto Maintenance, 1940s
 Gelatin silver print
 Museum purchase: Peter T. Bohan Art Acquisition Fund and Spencer Museum of Art Acquisition Fund; 2008.0327

The subject of this photo is an auto mechanic, and everyday hero with a story of his own. The photographer Gordon Parks grew up in Fort Scott, KS and became an internationally renowned photographer, author, director, and composer.



Aaron Douglas
 1899-1979
 Langston Hughes, author
 1902-1967
 Opportunity Magazine, publisher
 On De No'thern Road, 1926
 relief print, letterpress
 Museum purchase: Helen Foresman Spencer Art Acquisition Fund, Lucy Shaw Schultz Fund, and Office of the Chancellor; 2003.0012.03

Douglas and Hughes are both heroes of the Harlem Renaissance, an African American artistic movement of the early 20th Century, and both are from Kansas.



Roger Shimomura
 Born 1939
 Diary, 1978
 Museum purchase; 1979.0051

This painting is one of a series of works based on the diaries of the artist's grandmother during his family's time in Minidoka Japanese Internment Camp during WWII. The subject of this work shines a light on the men, women, and children of Japanese descent that withstood the strains of prejudice and suspicion during this difficult time in American history. Shimomura is a retired KU art professor and successful artist.