

Kelsey Heavin
HNTB
715 Kirk Drive
Kansas City, MO 64105

The study assessed existing and future traffic and safety needs on this section of K-10 and has identified a recommended four-lane access controlled freeway concept that provides a safe and reliable solution.

The purpose of this open house is to present the recommended alternative and provide the public an opportunity to learn more about it and ask questions.

The recommended alternative addresses safety concerns, future traffic projections, and strives to minimize impacts to the surrounding area.

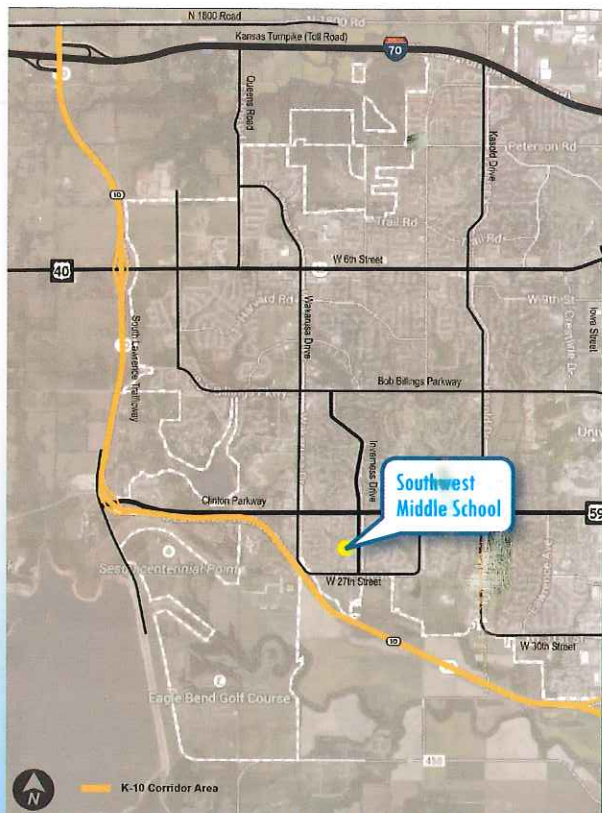
neopost[®]
10/09/2015

US POSTAGE \$000.48⁵



FIRST-CLASS MAIL
ZIP 66215
041L 12202957

Diane Stoddard
City of Lawrence
6 E 6th St.
Lawrence, KS 66044



**K-10
WEST LEG
SLT**

PUBLIC INFORMATION OPEN HOUSE

Thursday, October 29, 2015 • 5:00 p.m. to 7:00 p.m.
Southwest Middle School, 2511 Inverness Drive, Lawrence, KS 66047

Please join the Kansas Department of Transportation to learn more about the K-10 West Leg South Lawrence Trafficway (SLT) Concept Study and review the recommendation for improvements.

Stop by anytime this evening to see the recommendations and speak with the study team. There will be no formal presentation.

If you have questions or need special assistance at the open house please contact Kelsey Heavin at 816-527-2468 or kheavin@hntb.com

Kansas
Department of Transportation

KDOT Project No. 10-23 KA-3634-01