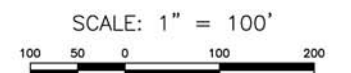
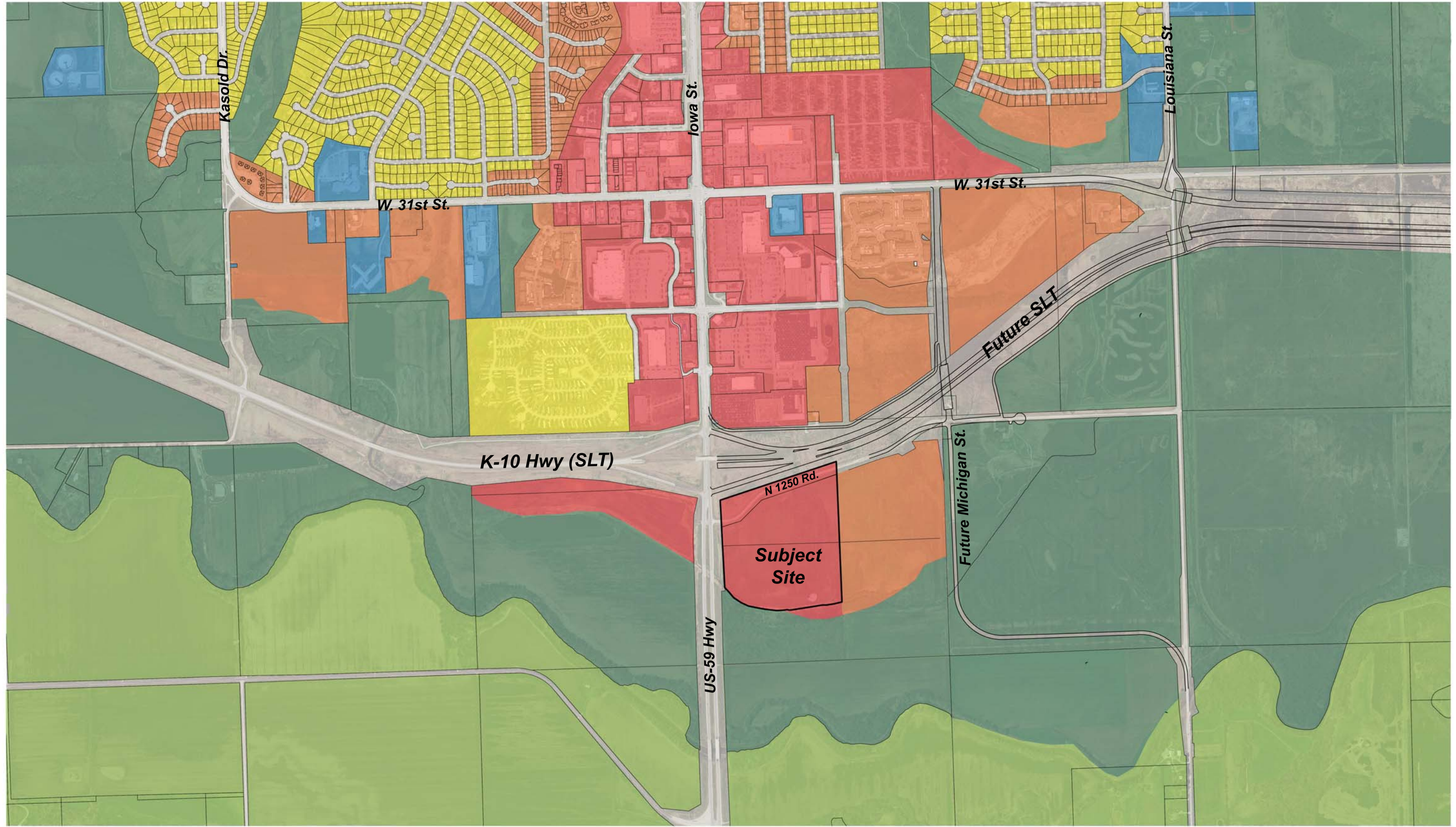




**SOUTHPOINT CENTER
CONCEPT PLAN**
PREPARED FOR SLT, LLC
AUGUST, 2015

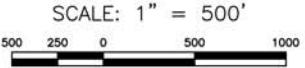


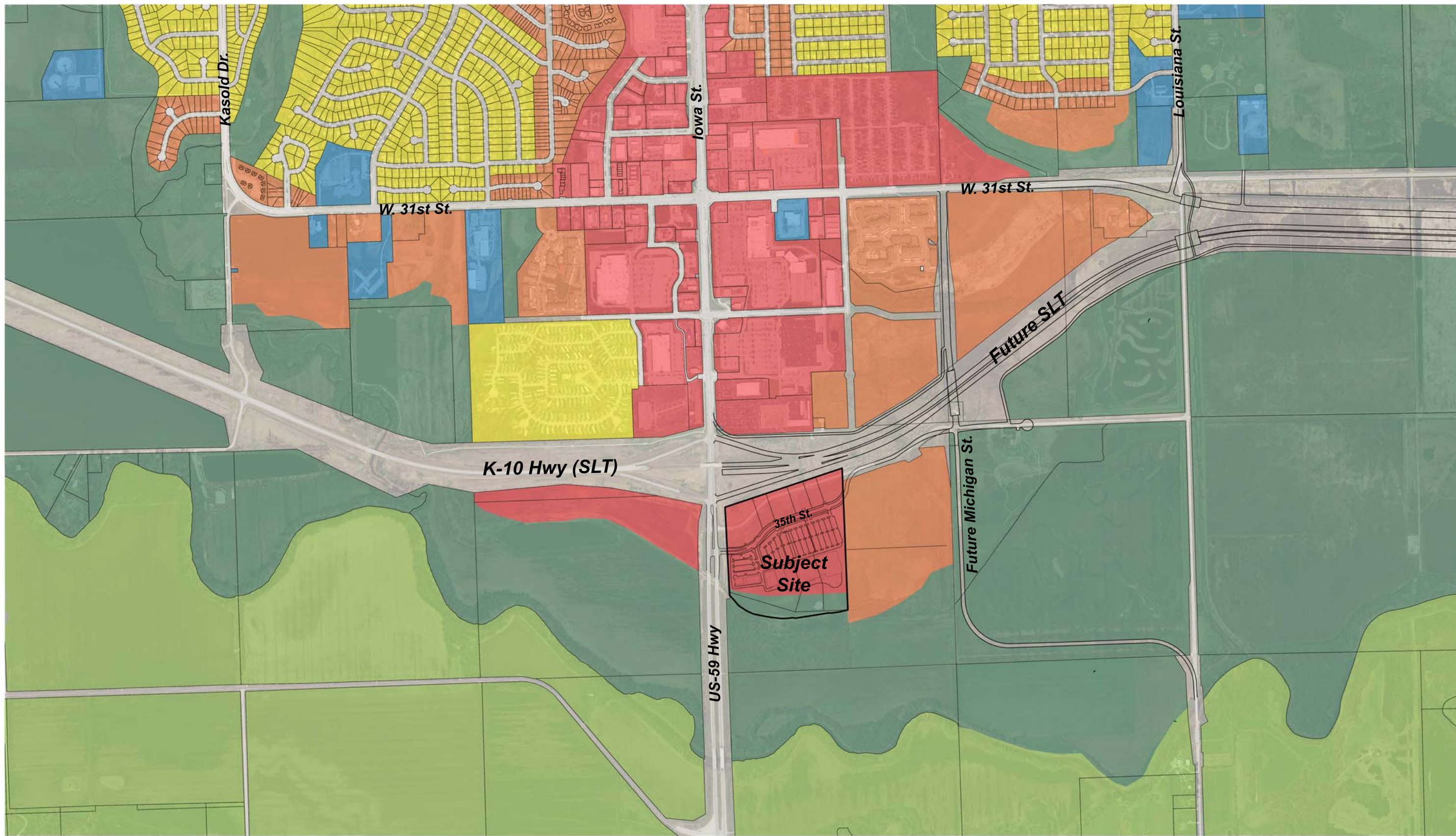


COMPREHENSIVE PLAN EXHIBIT
EXISTING + PLANNED
 PREPARED FOR SLT, LLC
 AUGUST, 2015

LAND USE SUMMARY:

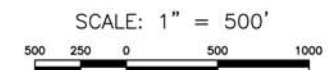
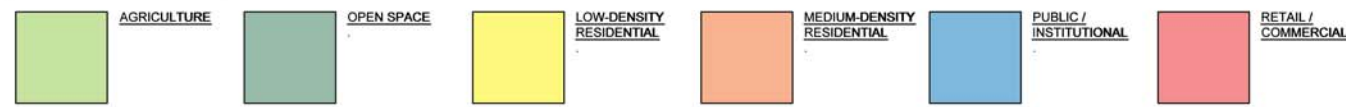
	AGRICULTURE		OPEN SPACE		LOW-DENSITY RESIDENTIAL		MEDIUM-DENSITY RESIDENTIAL		PUBLIC / INSTITUTIONAL		RETAIL / COMMERCIAL
--	-------------	--	------------	--	-------------------------	--	----------------------------	--	------------------------	--	---------------------



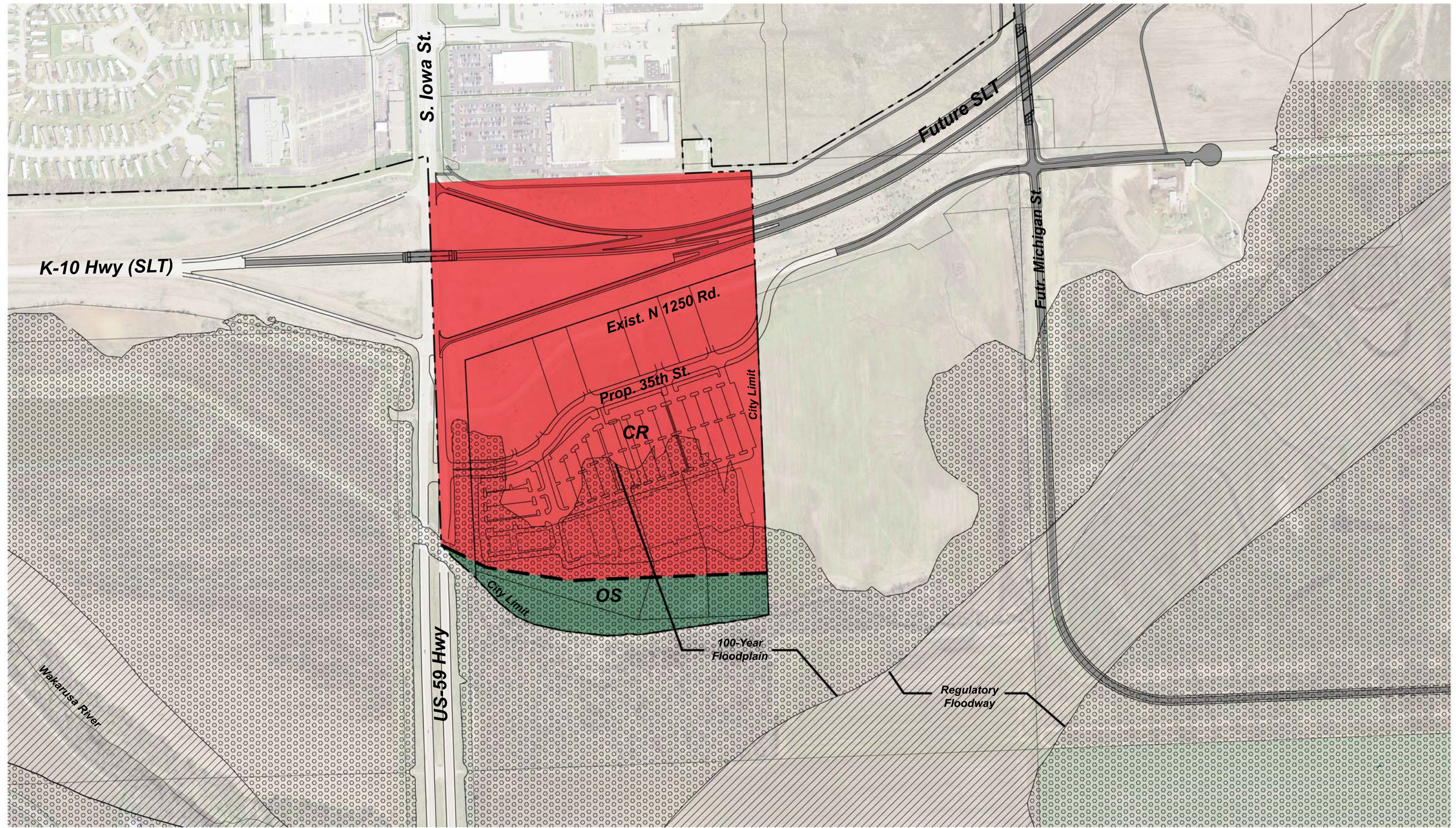


COMPREHENSIVE PLAN EXHIBIT
EXISTING + PROPOSED
 PREPARED FOR SLT, LLC
 AUGUST, 2015

LAND USE SUMMARY:



FILE: 11100111_01.dwg DATE: 8/14/2015 3:08 PM PLOTTED: 8/14/2015 3:08 PM



**SOUTHPOINT CENTER
REZONING EXHIBIT**
PREPARED FOR SLT, LLC
AUGUST, 2015

ZONING DISTRICT SUMMARY:



OPEN SPACE (OS)
TOTAL AREA: 6,706 AC.



REGIONAL
COMMERCIAL (CR)
TOTAL AREA: 59,798 AC.

