

Ruler

Line Path Polygon Circle 3D path 3D polygon

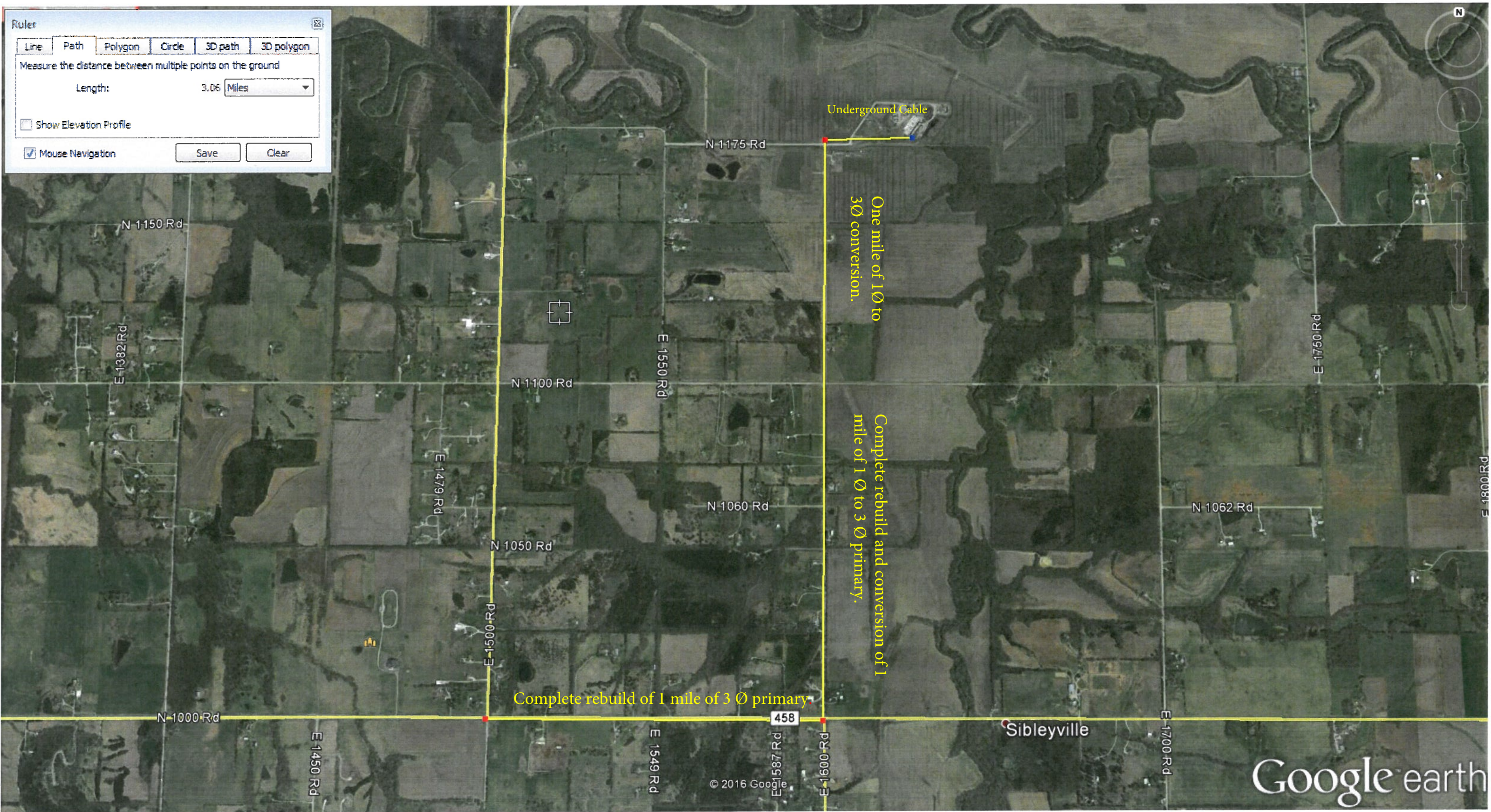
Measure the distance between multiple points on the ground

Length: 3.06 Miles

Show Elevation Profile

Mouse Navigation

Save Clear



Underground Cable

One mile of 1 Ø to 3 Ø conversion.

Complete rebuild and conversion of 1 mile of 1 Ø to 3 Ø primary.

Complete rebuild of 1 mile of 3 Ø primary

458

Sibleyville

Google earth

© 2016 Google