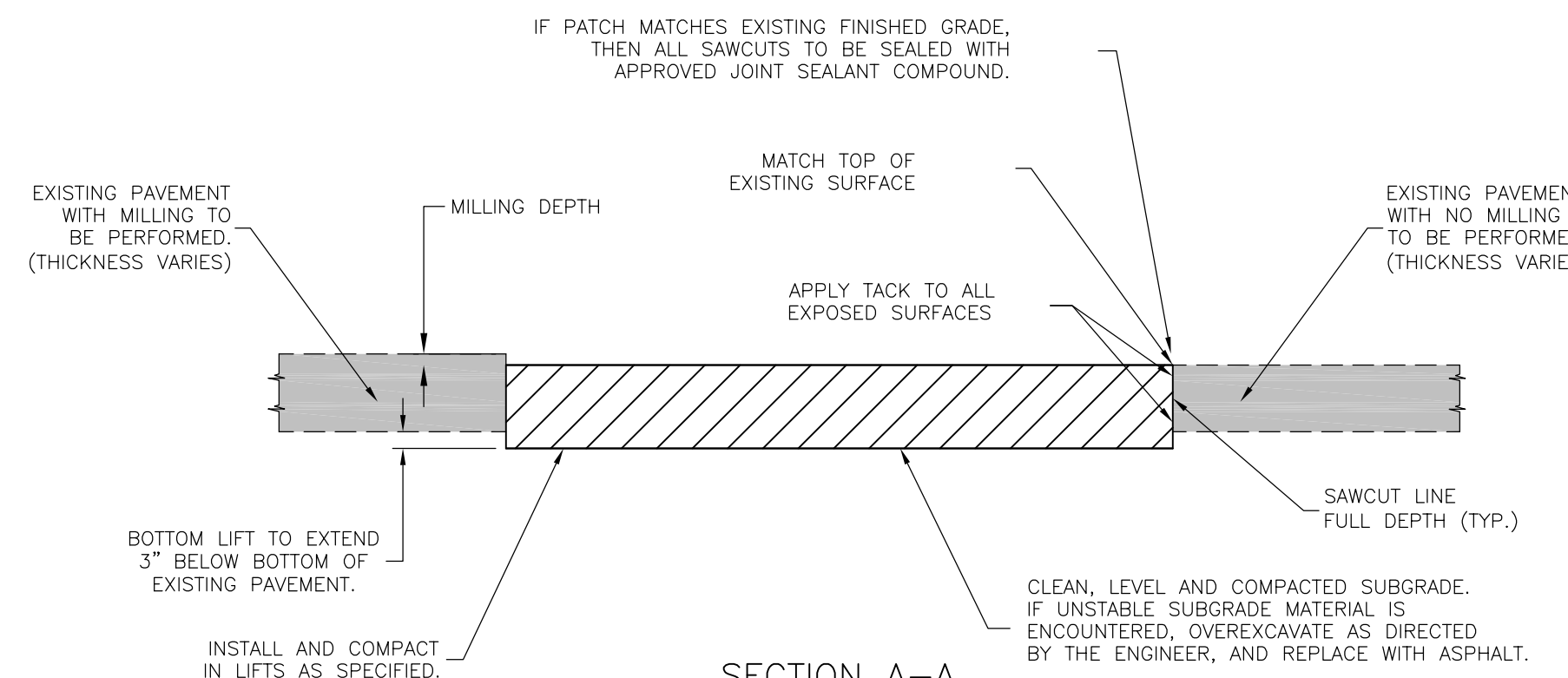
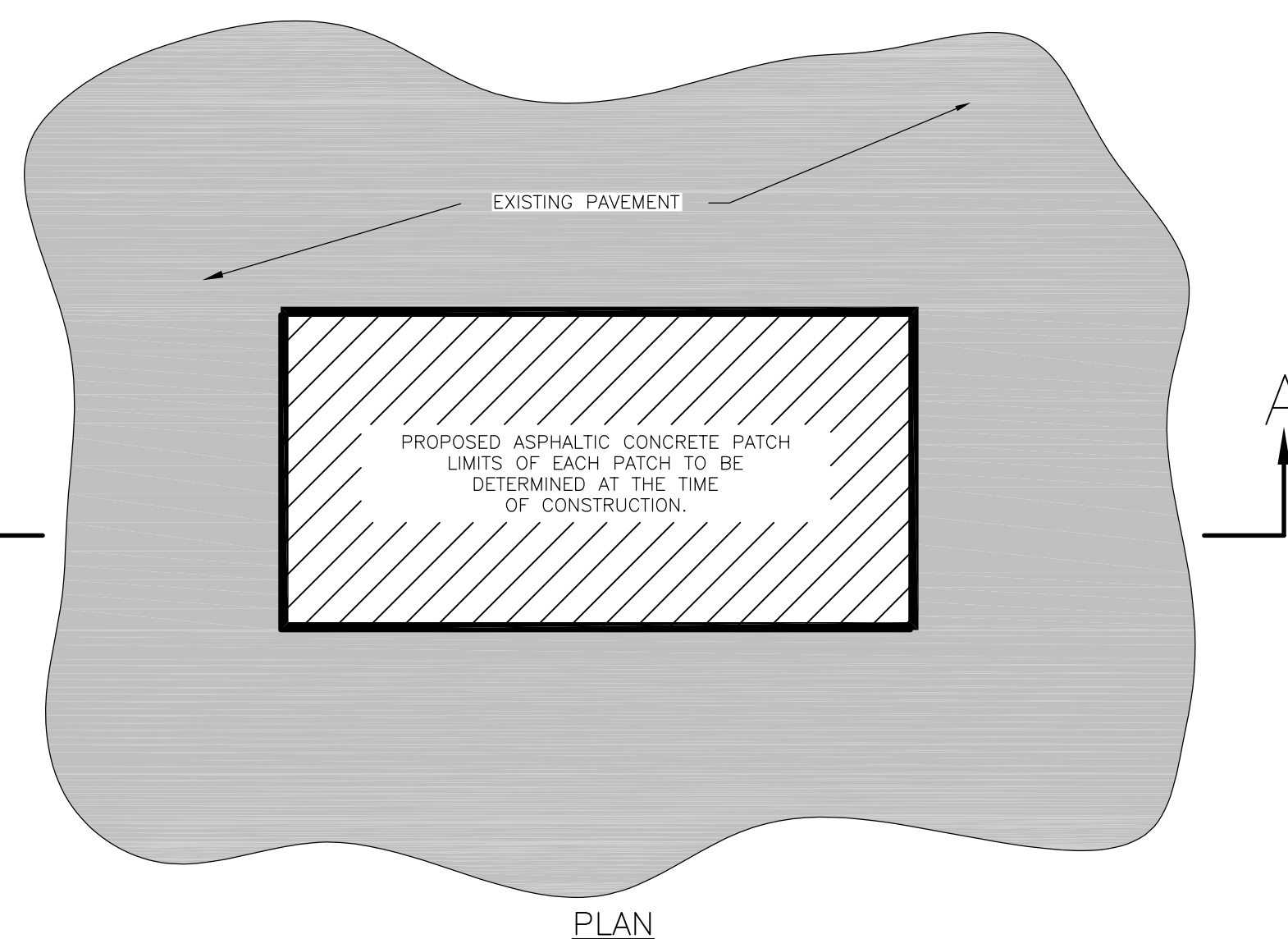
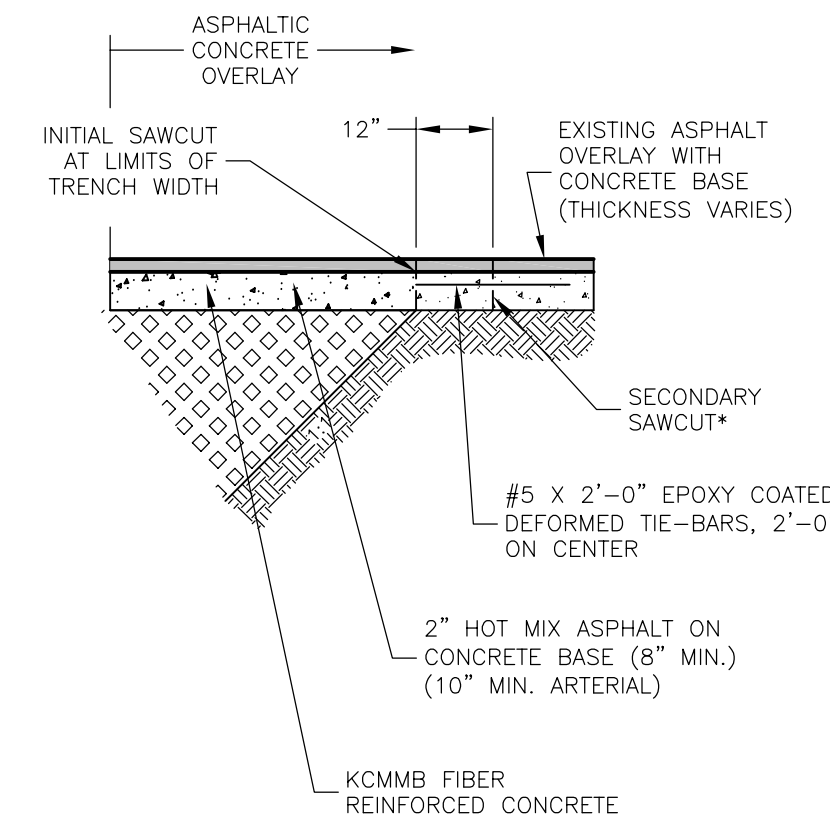
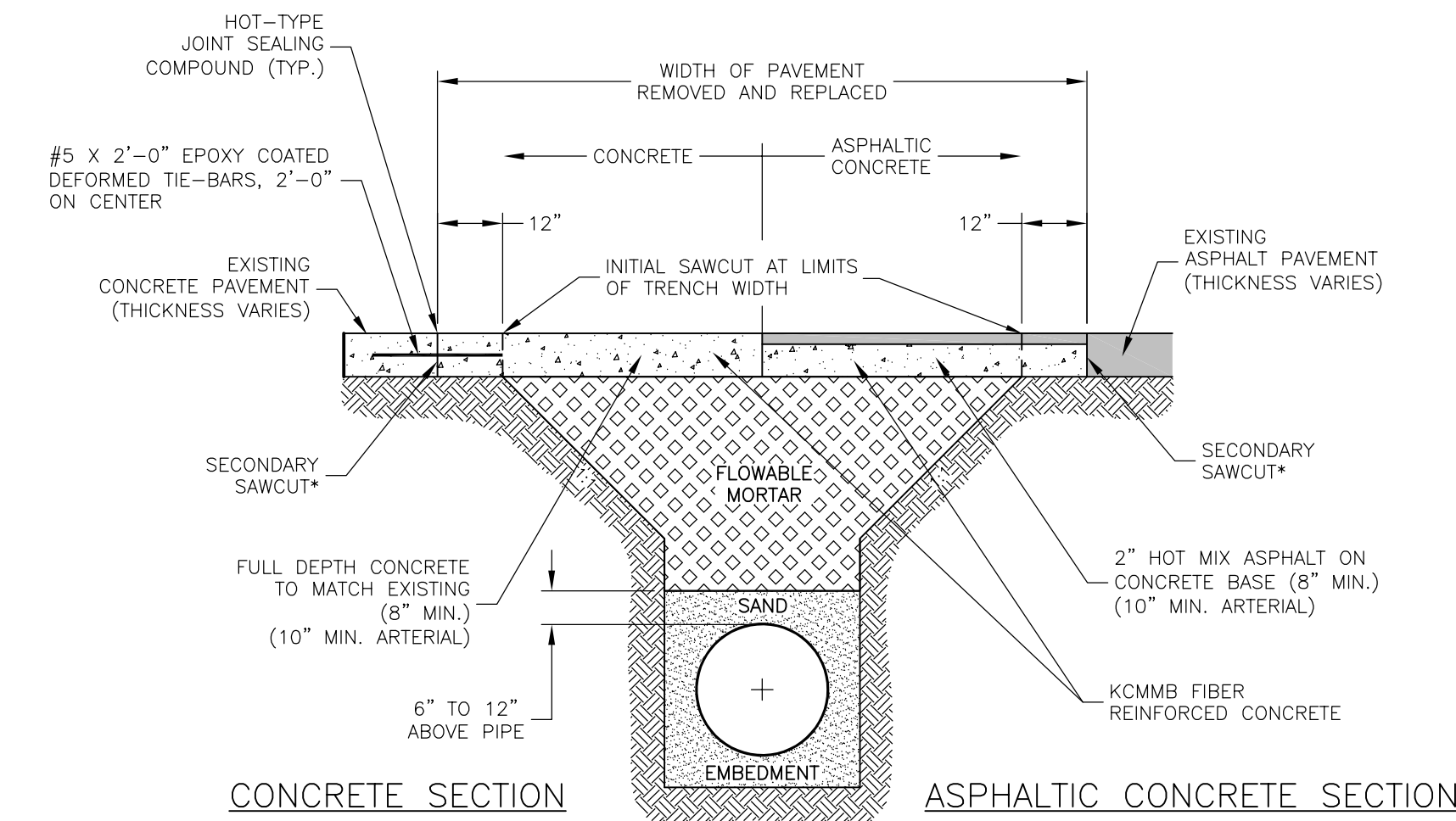


PORTLAND CEMENT CONCRETE PATCHING DETAILS



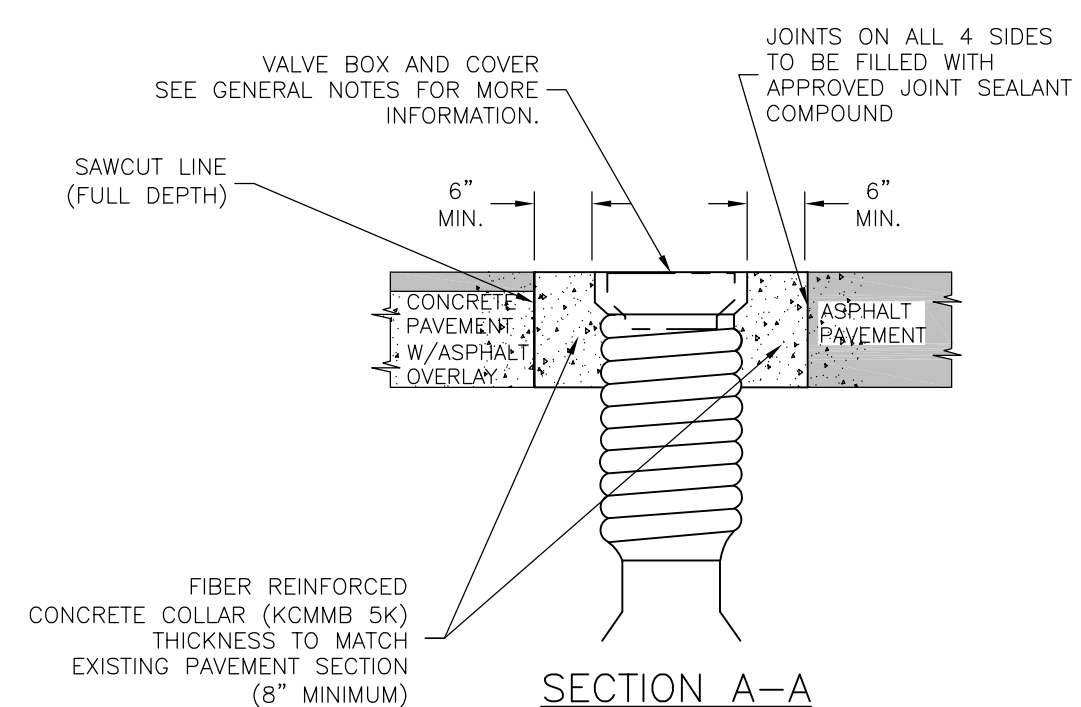
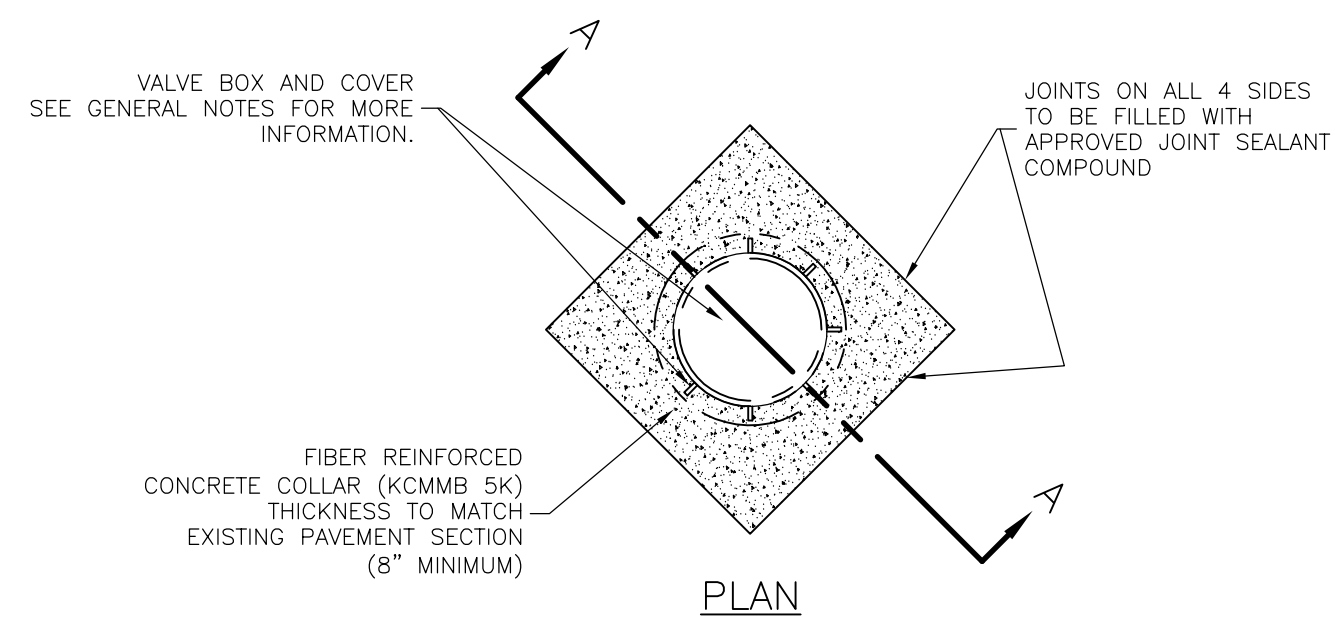
ASPHALTIC CONCRETE PATCHING DETAILS



NOTES

1. ALL PAVEMENT SAW CUTS SHALL BE MADE TO FULL DEPTH OF PAVEMENT THICKNESS AND PAVEMENT REMOVED WITHOUT DAMAGE TO ADJACENT PAVEMENT.
2. ALL TRENCHING AND BACKFILL SHALL BE ACCOMPLISHED TO PAVING SUBGRADE PRIOR TO INITIATION OF SECOND SAW CUT AND ADDITIONAL PAVEMENT REMOVAL.
3. PRIOR TO INSTALLATION OF FLOWABLE MORTAR AND NEW PAVEMENT, PAVEMENT SHALL BE OVERCUT TO EXTEND BEYOND ANY LOCATION THAT BECOMES UNDERMINED WITH APPARENT VOIDS UNDER PAVEMENT.
4. BARS SHALL BE DRILLED AND GROUTED INTO EXISTING CONCRETE PAVEMENT.
5. DRILLING AND GROUTING SHALL BE PER KDOT SPECIFICATIONS SECTION 842.
6. TRENCH BACKFILL SHALL BE FLOWABLE FILL FROM TWO (2) FEET BEHIND THE BACK OF CURB ON EACH SIDE OF THE STREET (INCLUSIVE OF GRAVEL DRIVES AND ALLEYS).
7. FOR OVERLAYED BRICK STREETS, THE BRICKS NEED TO BE CLEANED AND PALLETED. CONTACT THE CITY OF LAWRENCE STREET DIVISION TO SCHEDULE PICKUP. THE REMAINING TRENCH SHOULD BE TREATED AS PER THE ASPHALT OVERLAY DETAIL.
8. FOR BRICK STREETS, THE BRICK NEEDS TO BE REPLACED.

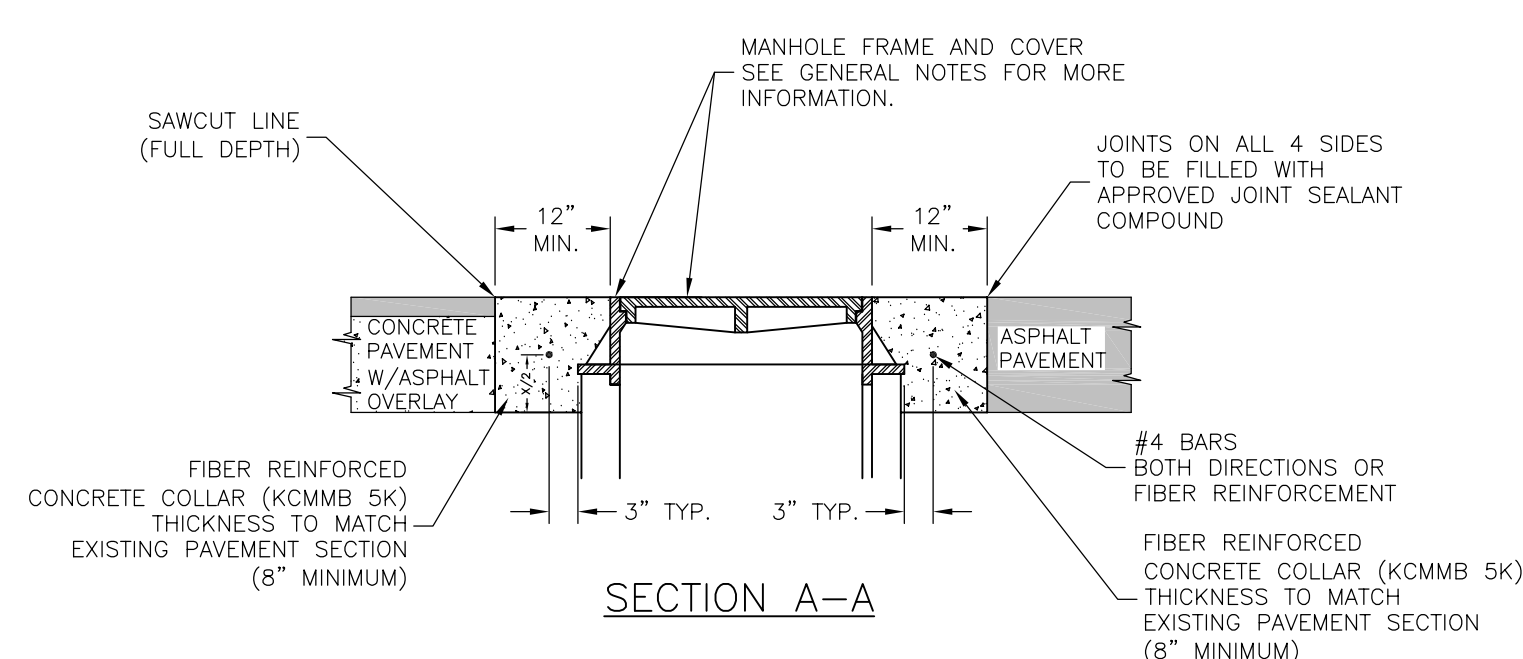
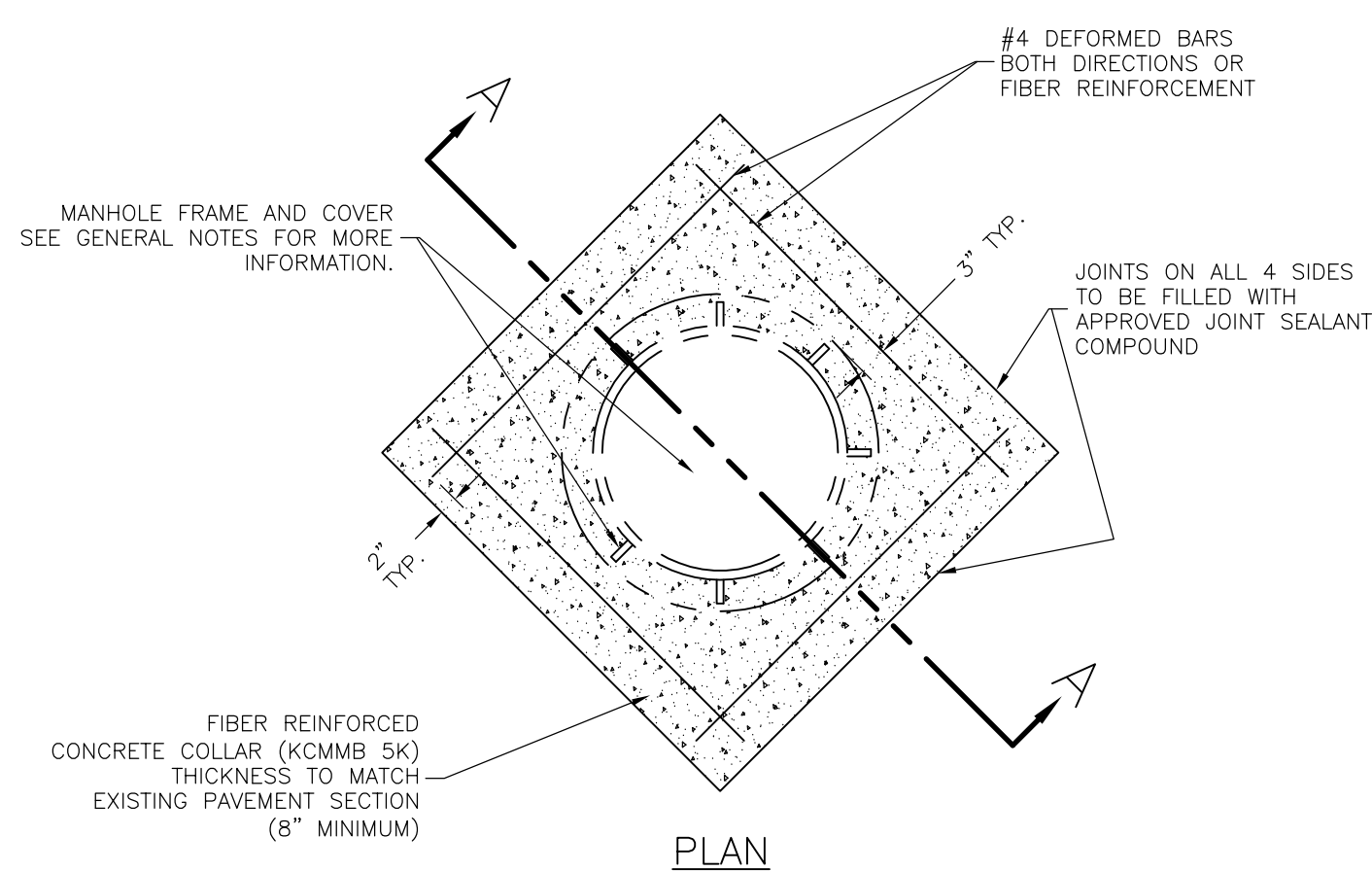
PERMANENT PAVEMENT REMOVAL AND REPLACEMENT DETAILS



GENERAL NOTES

- 1.) ADJUST VALVE BOX FRAME AND COVER TO FINISH GRADE AND SLOPE.
- 2.) THE ORIENTATION OF THE REINFORCED CONCRETE COLLAR SHALL BE DETERMINED BY THE ENGINEER IN THE FIELD.
- 3.) ALL ITEMS SHOWN ABOVE ARE SUBSIDIARY TO THE BID ITEM "VALVE ADJUSTMENT".

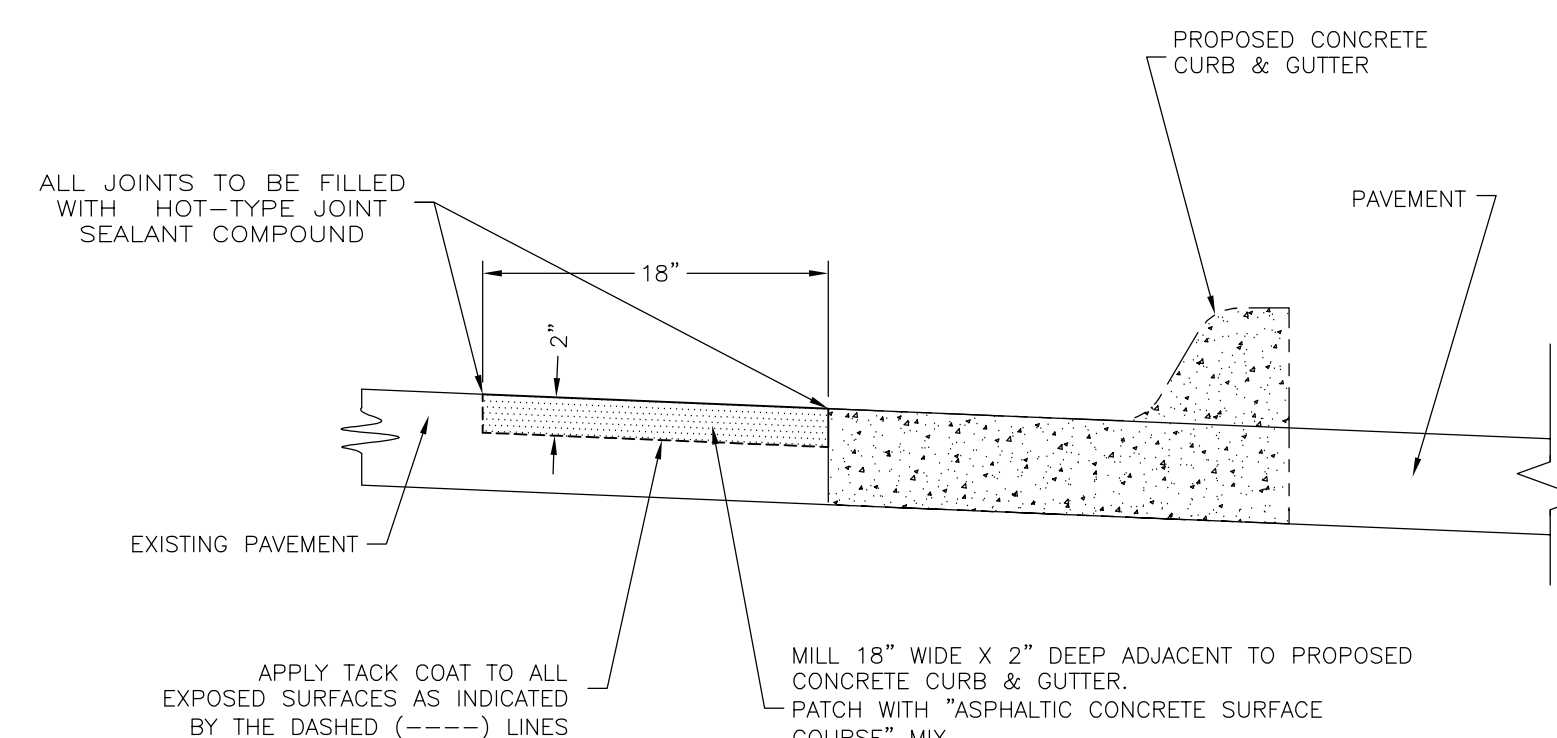
STANDARD VALVE ADJUSTMENT DETAILS



GENERAL NOTES

- 1.) ADJUST MANHOLE FRAME AND COVER TO FINISH GRADE AND SLOPE WITH CONCRETE ADJUSTMENT RINGS AND LEVELING MORTAR AS REQUIRED.
- 2.) THE ORIENTATION OF THE REINFORCED CONCRETE COLLAR SHALL BE DETERMINED BY THE ENGINEER IN THE FIELD.
- 3.) ALL ITEMS SHOWN ABOVE ARE SUBSIDIARY TO THE BID ITEM "MANHOLE ADJUSTMENT".

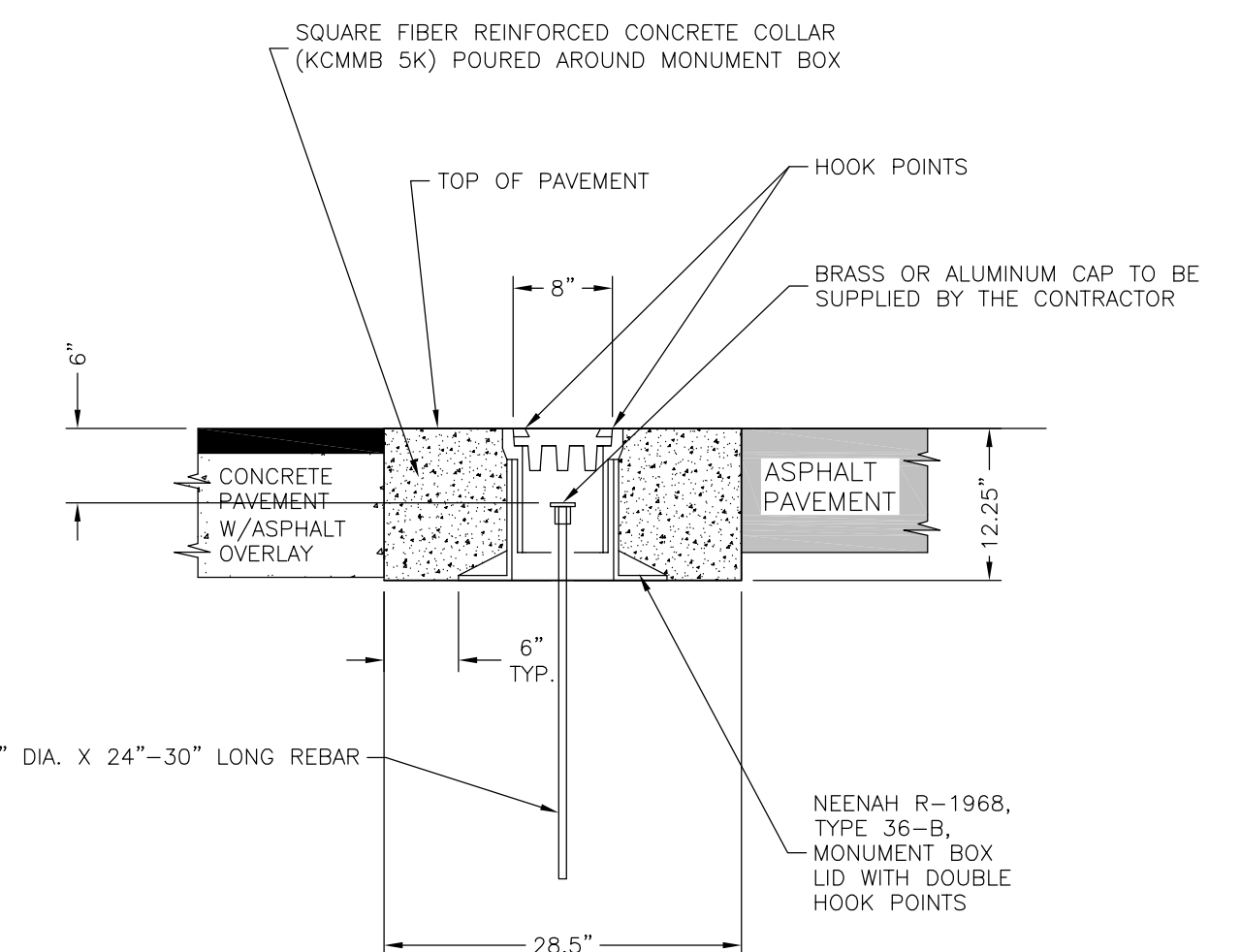
STANDARD MANHOLE ADJUSTMENT DETAILS



GENERAL NOTES

- 1.) ADJUST MONUMENT BOX TO FINISH GRADE AND SLOPE WITH CONCRETE ADJUSTMENT RINGS AND LEVELING MORTAR AS REQUIRED.
- 2.) THE ORIENTATION OF THE REINFORCED CONCRETE COLLAR SHALL BE DETERMINED BY THE CITY SURVEYOR IN THE FIELD.
- 3.) ALL ITEMS SHOWN ABOVE ARE SUBSIDIARY TO THE BID ITEM "MONUMENT BOX INSTALL/ADJUSTMENT".
- 4.) JOINT SEALANT SUBSIDIARY TO OTHER BID ITEMS.
- 5.) TACK COAT SUBSIDIARY TO OTHER BID ITEMS.
- 6.) ASPHALTIC CONCRETE EDGE PATCH SUBSIDIARY TO OTHER BID ITEMS.

ASPHALTIC CONCRETE EDGE PATCH DETAIL ADJACENT TO PROPOSED CONCRETE CURB AND GUTTER OR PAVEMENT



GENERAL NOTES

- 1.) ADJUST MONUMENT BOX TO FINISH GRADE AND SLOPE WITH CONCRETE ADJUSTMENT RINGS AND LEVELING MORTAR AS REQUIRED.
- 2.) THE ORIENTATION OF THE REINFORCED CONCRETE COLLAR SHALL BE DETERMINED BY THE CITY SURVEYOR IN THE FIELD.
- 3.) ALL ITEMS SHOWN ABOVE ARE SUBSIDIARY TO THE BID ITEM "MONUMENT BOX INSTALL/ADJUSTMENT".
- 4.) OPTION TO INSTALL BY CORING METHOD AS APPROVED BY THE ENGINEER.

2022 EDITION

SHEET \_\_\_\_ OF \_\_\_\_

DATE	BY	REVISION
05-01-22	LJM	REPLACES ALL PREVIOUS VERSIONS OF STREET REPAIR DETAILS
03-01-21	LJM	REPLACES ALL PREVIOUS VERSIONS OF STREET REPAIR DETAILS



STANDARD DETAILS FOR STREET REPAIR

DAVID P. CRONIN  
CITY ENGINEER

CRAIG S. OWENS  
CITY MANAGER