

City Manager's Office

Department Overview



City of Lawrence

City Manager's Office

- Human Resources
- City Clerk
- Risk Management
- Economic Development
- Sustainability
- Arts and Culture



City of Lawrence

Economic Development

- Analysis of economic development requests
- Economic development compliance report
- Public Incentive Review Committee (PIRC)



City of Lawrence

Economic Development

- Works with partners on job retention and creation, small business development, and entrepreneurship
 - *Economic Development Corporation (EDC)*
 - *Douglas County*
 - *Bioscience & Technology Business Center (BTBC)*
 - *Other partners*



City of Lawrence

Arts & Culture

- Porter Arneill, Arts & Culture Director
 - Onboard May 5th
- 9th Street Corridor / Art Place Project
 - In progress
- City-wide Cultural Plan
 - In progress
 - Community Meetings on May 6th and May 9th



City of Lawrence

Arts & Culture

- Sister Cities Advisory Board
 - 25th Anniversary of Hiratsuka
- Lawrence Cultural Arts Commission
 - LCAC grant program
 - Phoenix Awards
 - Outdoor sculpture program
 - Percent for art



City of Lawrence

City Clerk's Office

Manages and coordinates...

- **Official records system**

750 storage vendor transactions in '14

- **Responses to KORA requests**

66 KORA requests in '14

- **City Commission meeting minutes**

1,654 pages of minutes in '14



City of Lawrence

City Clerk's Office

Manages and coordinates...

- **Legal publications**

\$32,000 in legal publications in '14

- **Business and alcohol licensing**

681 active licenses in '14

- **Special assessments**

\$2,481,911 placed on tax roll in '14



City of Lawrence

Risk Management Division

Manages and coordinates...

- **City's insurance program**
 - Self-insurance funds
 - Purchased insurance policies
- **Risk prevention and safety program**
- **General liability and auto accident claims**
- **Workers' compensation program**



City of Lawrence

Human Resources

- Strategic Business Partner with City Management
 - Recruitment/Retention
 - Health and Wellness Plan
 - Retirement Programs
 - Compensation Programs
 - Professional Development



City of Lawrence

Human Resources 2016

- Financial stability of the Employee Health & Wellness Plan
- Market competitive employee salaries
- Performance program structured to reward the accomplishment of city goals
- Retaining quality city staff
- Payroll system conversion

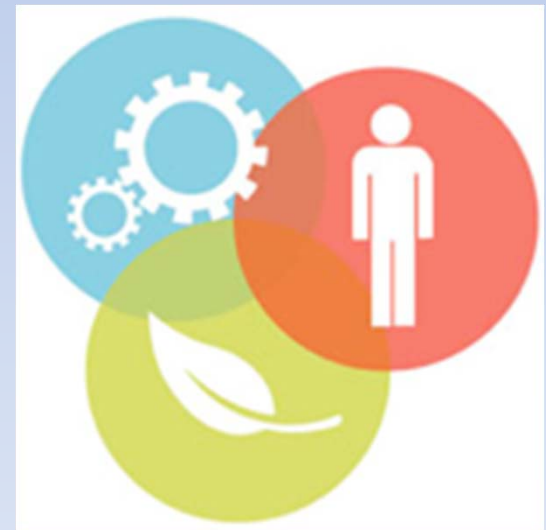


City of Lawrence

Sustainability

Coordination across City departments:

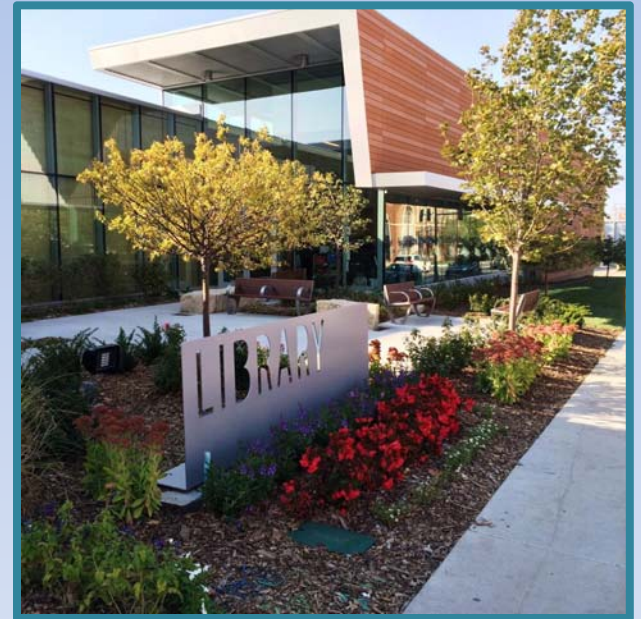
- Energy efficiency/conservation
- Fuel conservation/alternative fuels
- Sustainable economic development
- Healthy, local food systems
- Sustainable transportation
- Water conservation
- Waste reduction and recycling
- Green building construction
- Outdoors and recreation



City of Lawrence

Sustainability Projects: 2016

- Energy efficiency audits and financing of improvements
- Sustainable procurement
- LEED buildings
- Food systems coordination
- Bicycle/pedestrian efforts
- STAR Communities Index



City of Lawrence
