



The purpose of the Sustainability Advisory Board is to advise the Governing Body of the City of Lawrence, Kansas, regarding issues affecting sustainability, environmental protection, waste reduction, recycling, energy conservation and natural resource conservation environmental protection.

MINUTES

September 11, 2019 – 5:30 pm

MEETING LOCATION: Parks and Recreation Administration Building in South Park, 1141 Massachusetts St, Lawrence, KS 66044

Members present: Jackie Carroll, Deb Ford, Kay Johnson, Rachel Krause, Kira McPherson, Michael Steinle

Members not present: Lei-Lei Mitchell, Ma’Ko Quah Jones, Allison Koonce,

Staff present: Jasmin Moore

Public present: Several members of the public were present

- I. Presentation and Discussion: Lawrence Greenhouse Gas Inventory Update- technical report by 2019 Sustainability Fellow Amilee Turner
- II. CALL MEETING TO ORDER: Determine quorum of members. 6:12 p.m.
- III. Approve August meeting minutes. Motion by Michael Steinle, second by Rachel Krause. Approved.
- IV. SAB Administration- There is currently one open position on SAB. Staff will ask Mayor Larsen for an update.
- V. Presentation and Discussion: Climate and Health Declaration, by Jaime Holfing of the Climate and Energy Project (presentation included below)

The Sustainability Advisory Board recommends to the City Commission that the City of Lawrence be a signatory to the Kansas Climate and Health Declaration to:

- Increase awareness of the need to take significant steps to curb climate change;
- Adapt to impending climate changes; and
- Signify Lawrence’s commitment to resiliency, climate change mitigation, and health stewardship

- a. Motion by Michael Steinle, second by Kay Johnson. Approved.

VI. Subcommittee report

- a. Subcommittee membership was discussed and reassigned because of member turn over.

b. Current SAB Subcommittee Membership

Priority Area	Subcommittee membership
Climate Action/Protection/Adaptation plan in response to the climate crisis	Ma'Ko Quah Jones, Kira McPherson, Michael Steinle, Jessi Lee , Deb Ford, Kay Johnson
100% renewable energy goal	Jackie Carroll, Deb Ford
Decrease Food Waste	Tresa McAlhane , Lei-Lei Mitchell , Michael Steinle, Kira McPherson
Decrease single-use plastics Subcommittee is drafting a recommendation to be considered at the June meeting, which includes a fee structure for bags intended to decrease bag use by 60%.	Rachel Krause, Allison Koonce, Michael Steinle
Energy efficiency incentives for rental property	Jessi Lee , Lei-Lei Mitchell, Allison Koonce, Kay Johnson
Develop a sustainability decision criteria for policies that come before the city commission.	Jackie Carroll, Rachel Krause, Kira McPherson, Tresa McAlhane

- c. One or two subcommittees will report out at each SAB meeting for the remainder of 2019 with the following schedule (subject to change).
- i. October- Climate Action Planning & maybe plastics
 - ii. Nov- renewable Energy & food waste
 - iii. Dec- Decision criteria

VII. Staff Report

- Upcoming event of interest: [Metro KC Climate Action Summit](#), September 14, Johnson County Community College. The afternoon keynote session is FREE AND OPEN TO THE PUBLIC. The afternoon session (2:15 - 5:00) includes: Rep. Sharice Davids; Mayor Quinton Lucas (Kansas City, MO) and Mayor James Brainard (Carmel, IN); Keynote Speaker - Paul Hawken

VIII. Key takeaways to share with the City Commission

- a. SAB reviewed GHG inventory update
- b. SAB recommends the City of Lawrence sign on to Climate and Health Declaration.
- c. Two SAB members are attending the [Metro KC Climate Action Summit](#), September 14

IX. Future Agenda Items

- a. Lawrence air quality analysis - October
- b. Microplastics - October

- c. 2018 energy code - November
 - d. Water structure updates (check back with Dave Wagner)
 - e. Update on Climate Action Summit (October)
 - f. Subcommittee structure and response to public
 - g. Develop questions subcommittees want public feedback on
- X. Member Updates
- a. September 20 Climate Strike in South Park
 - b. City Commission Candidate Forum on October 2, 6pm, Lied Center.
 - c. SAB members want to know more about recycling contract and what is really happening with recyclables. Request solid waste staff attend a future meeting to address this issue.
- XI. Public Comment
- XII. Adjourn 7:21 p.m.

Next regular SAB meeting:

October 9, 2019 at 5:30 p.m.

Venue: Parks and Recreation Administration Building in South Park, 1141
Massachusetts St, Lawrence, KS 66044



KANSAS **CLIMATE + HEALTH** DECLARATION



Rachel Myslivy
September 2020
Kansas Climate Services Summit

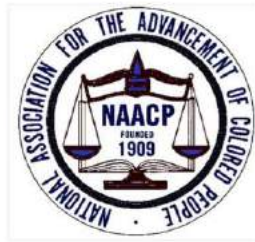




The Climate & Energy Project
seeks to dramatically reduce greenhouse gas emissions
in America's Heartland through the ambitious deployment of
energy efficiency and renewable energy, in policy and practice.

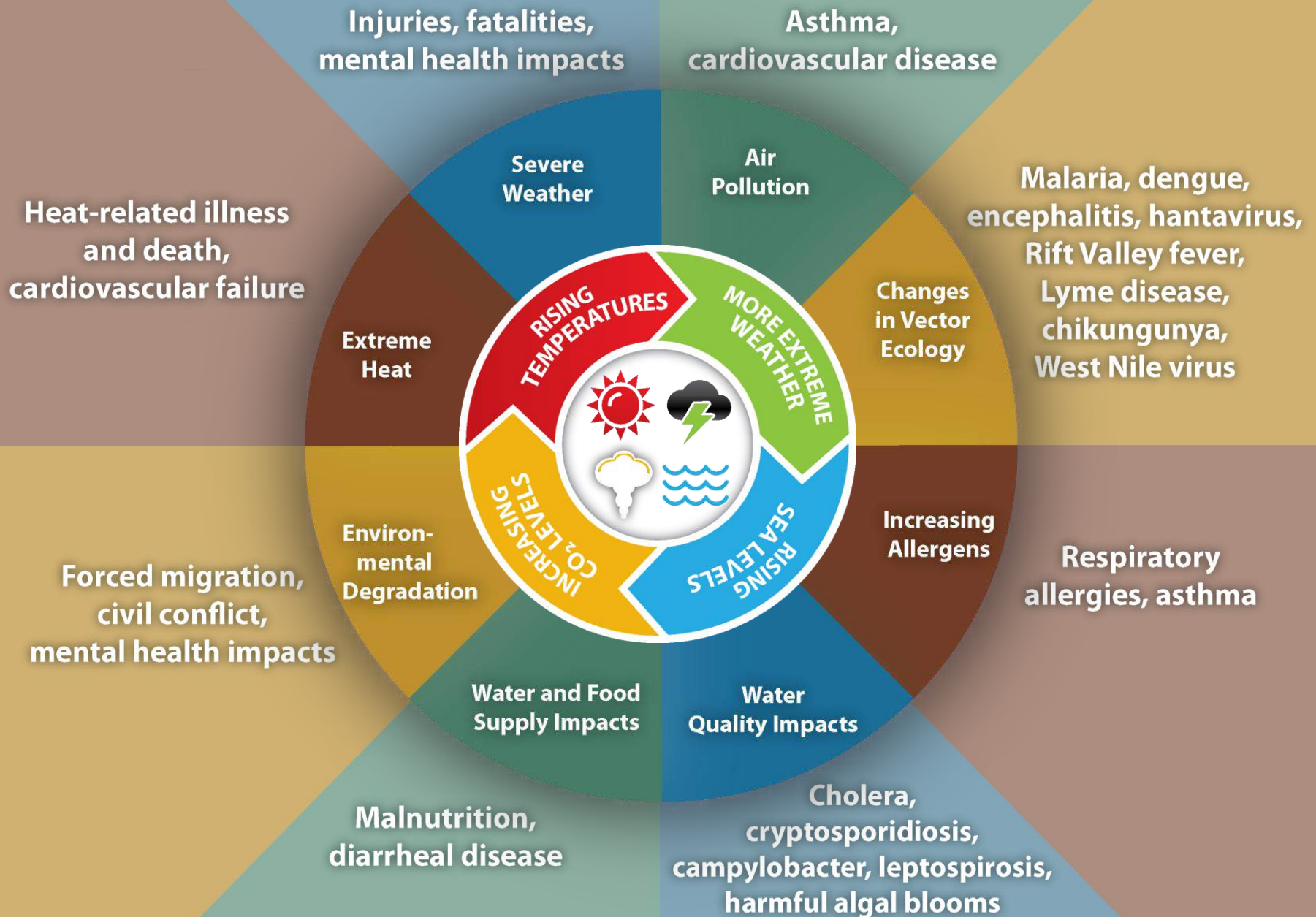


Reducing climate risks positively impacts our state's
Water, Energy, Air, Land, Transportation, & Health.



Partners explore connections between health equity and environmental concerns to collaboratively identify opportunities that **reduce risk and increase resilience in the face of a changing climate.**

Impact of Climate Change on Human Health



“Climate Change is a Health Emergency”

Declaration on Climate Change & Health 2016, 2019



The public health, environmental health, patient advocacy, healthcare, nursing and medical community are united in our efforts to combat climate change and to protect the public's health from current and future climate impacts.

Health and Climate Change in Kansas (July 2019)

By Steve Corbett, Ph.D., [Jason M. Orr, M.P.H.](#), [Charles Hunt, M.P.H.](#) | July 22, 2019



Given that Kansas has a substantial agricultural industry, with an economy that is highly dependent on the weather, climate change is a substantial concern in Kansas.

... the projected climate changes are likely to have negative impacts on human health.



KANSAS
HEALTH
INSTITUTE

CLIMATE + HEALTH DECLARATION

WE BELIEVE IN COMMUNITY
RESILIENCE

**WE DECLARE OUR COMMITMENT
TO A HEALTHIER FUTURE FOR ALL.**

www.resilientkansas.org

Kansas-specific data referenced in the Kansas Climate + Health Declaration

- Kansas Health Institute
- Intergovernmental Panel on Climate Change
- U.S. Global Change Research Program
- American Lung Association
- Centers for Disease Control and Prevention
- USGBCRP Nat'l Climate Assessment: Midwest
- American Psychological Association
- American Public Health Association
- American Academy of Pediatrics.

www.resilientkansas.org



KANSAS
CLIMATE + HEALTH
DECLARATION

Climate disruption impacts the lives, health, and economic well-being of Kansans.



COVERING THE BETTER PART OF KANSAS
THE HUTCHINSON NEWS

National Climate Assessment shows more heat, flooding in Kansas' future.

Mitchell United Methodist Chapel surrounded by water.

Hutchinson, KS, October 10, 2018

Climate disruption impacts the lives, health, and economic well-being of Kansans.

His cattle are dead, but his family is alive, and he's thankful.

"They never stood a chance in a lot of these pastures, the fire was so fast."

March 9, 2017, The Wichita Eagle



The Wichita Eagle



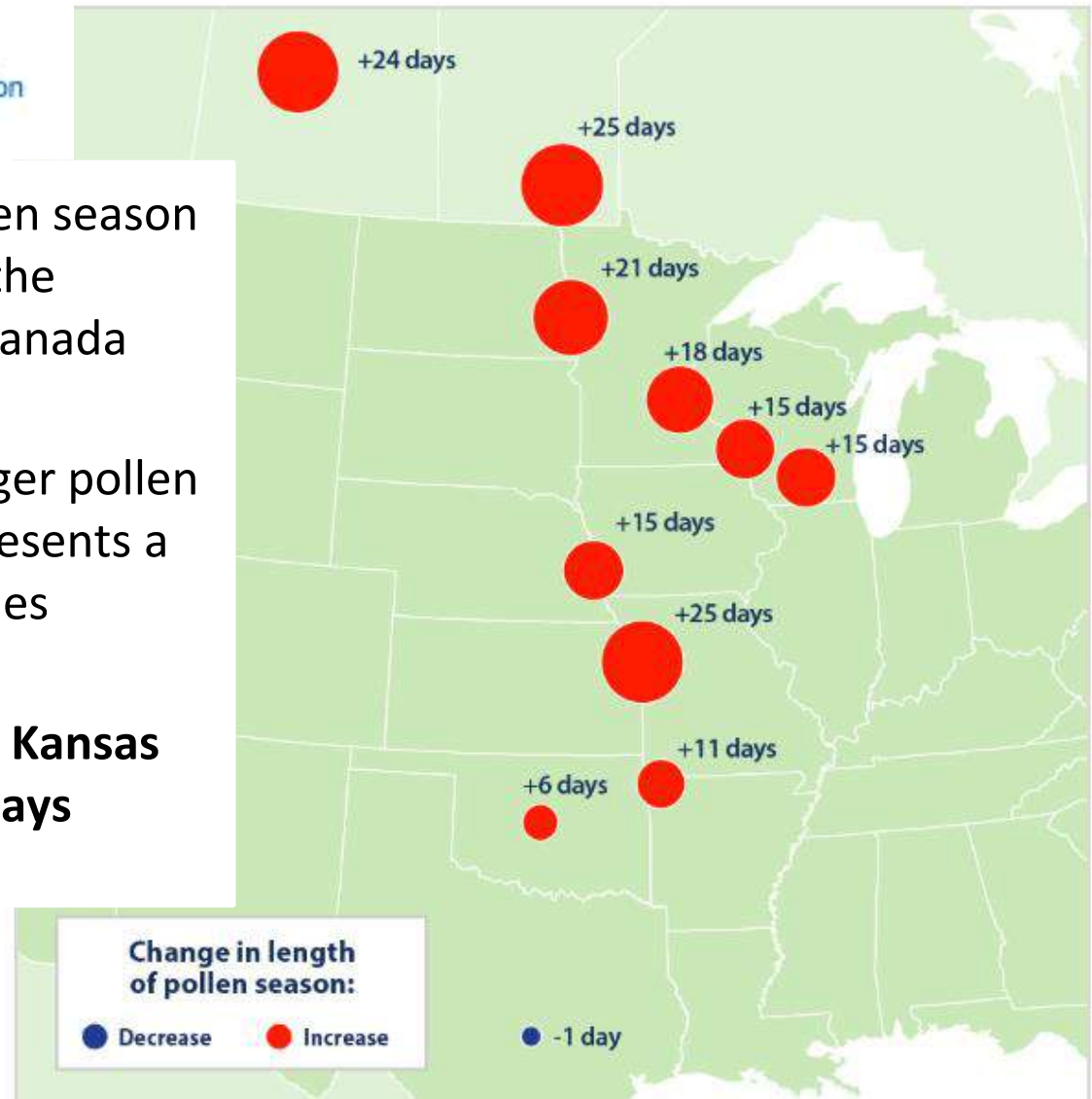
Climate change is a major public health concern in Kansas.



The length of ragweed pollen season changed at 11 locations in the central United States and Canada between 1995-2015.

Red Circles represent a longer pollen season; the blue circle represents a shorter season. Larger circles indicate larger changes.

The ragweed season in the Kansas City area increased by 25 days between 1995-2015.



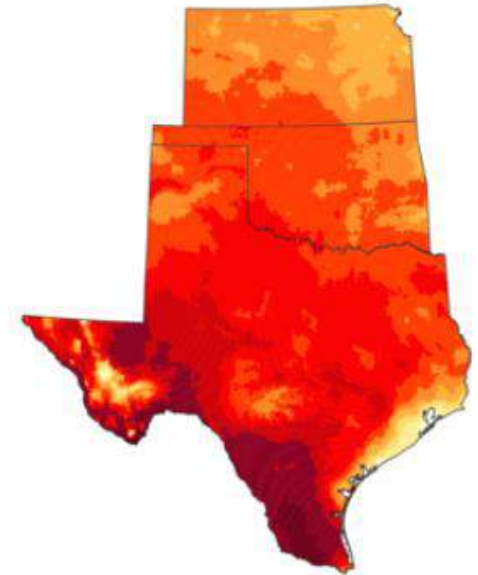
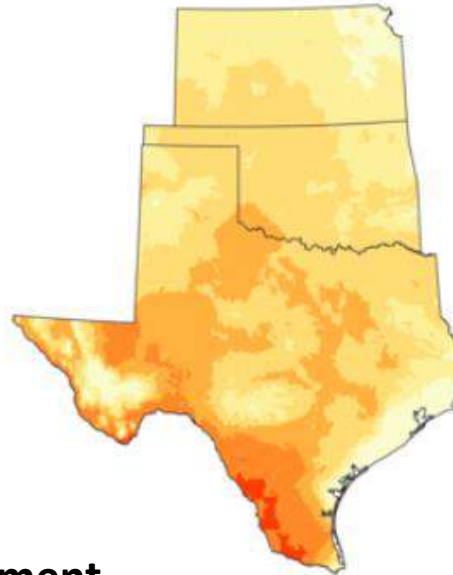
Climate change is a major public health concern in Kansas.

Late 21st Century

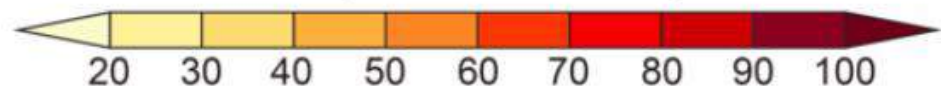
Lower Scenario
(RCP4.5)

Higher Scenario
(RCP8.5)

By the end of the century, average temperatures in Kansas will rise as much as 4 degrees and the number of days above 100 degrees will increase by 20 to 30.



Change in Number of Days



Projected increase in the number of days above 100 degrees. degrees.

CREDIT NATIONAL CLIMATE ASSESSMENT 4

Fourth National Climate Assessment

Climate change is a major public health concern in Kansas.

Suicide rate for farmers in northwest Kansas is up 64 percent, higher than national average

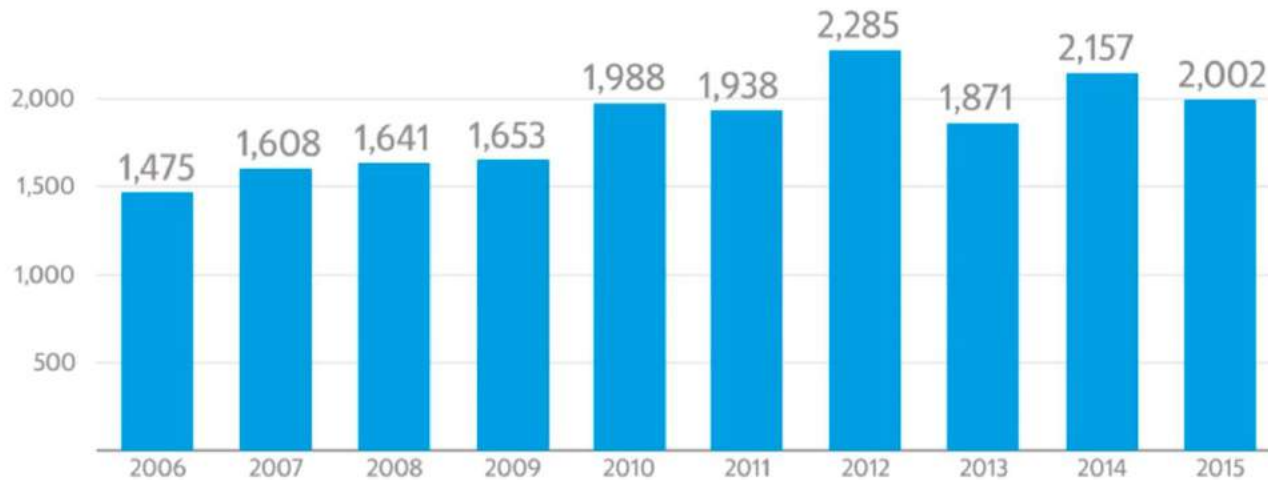


Those least responsible will be most impacted and least able to adapt.

ER visits for asthma attacks surging for KC kids. Could climate change play a role?
September 26, 2018 - Kansas City Star

KC Health Department sees rise in asthma-related ER visits

From **2006 to 2009**, there were never more than 1,653.
From **2010 to 2015**, there were never fewer than 1,871.

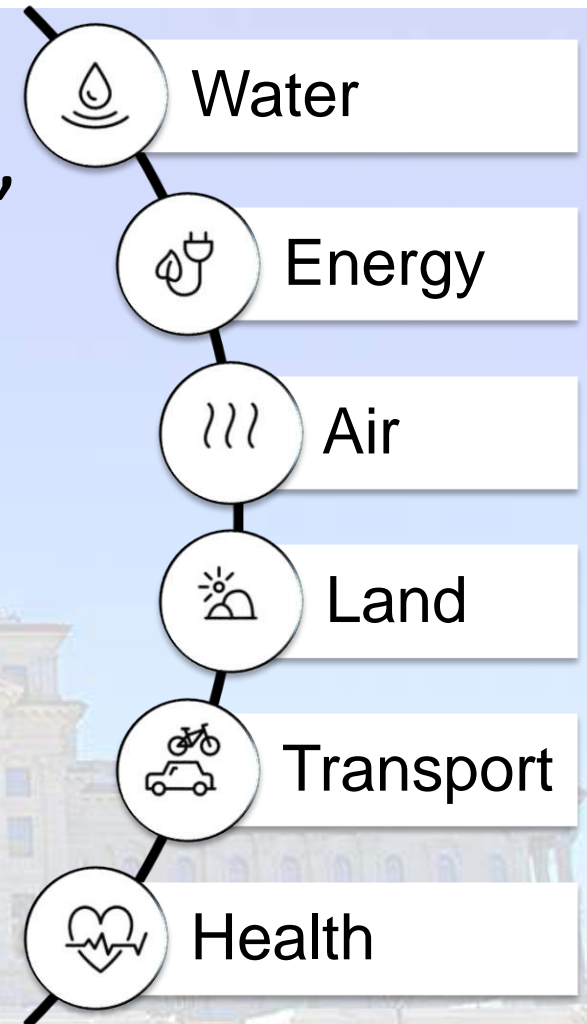


Source: Kansas City Health Department



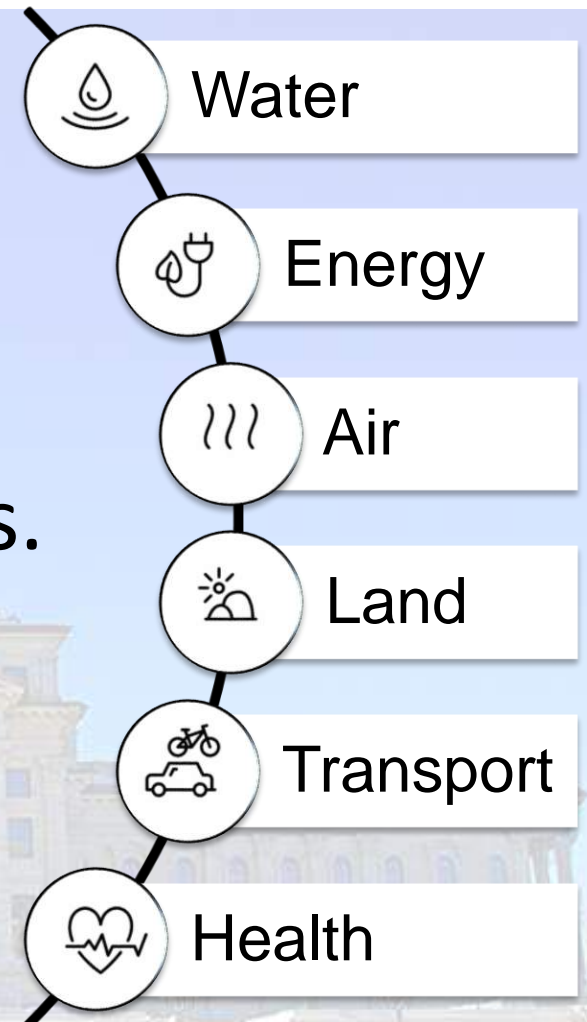
Solutions exist at all levels to build resilience, economic opportunities, and healthy communities.

- ✓ Protect Kansas water, energy, air, & land resources.
- ✓ Reduce emissions associated with electricity generation, transportation, & agriculture.
- ✓ Secure & increase access to healthcare across the state.



Solutions exist at all levels to build resilience, economic opportunities, and healthy communities.

- ✓ Learn about solutions that work in Kansas.
- ✓ Take action in homes, organizations, & communities.
- ✓ Adopt state & local Climate Action Plans.



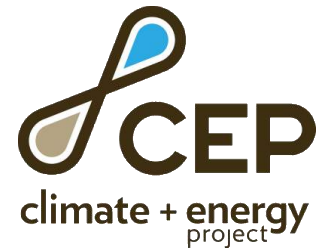
WE DECLARE OUR COMMITMENT TO A HEALTHIER FUTURE FOR ALL.

We stand with leading public health organizations in making a clear call to our state's leadership to address climate change as a primary threat to public health.

We urge bold, comprehensive action to reduce emissions and build resilience.
We need to reduce risks of climate disruption to safeguard the future of our state.



Organizational Signers



Sign the Climate + Health Declaration

First Name *

Last Name *

Email *

Street

Zip/Postal Code *

Not in the US?

phone number

IF YOU ARE IN A HEALTH RELATED FIELD, PLEASE
INDICATE YOUR OCCUPATION:

Health Related Occupation

Comments

ADD YOUR NAME



DECLARE ORGANIZATIONAL SUPPORT

TAKE ACTION

<http://bit.ly/KSClimateHealth>

Take Action

WRITE LETTERS TO THE EDITOR

Templates and samples for writing your own letters and op-eds.

[LEARN MORE →](#)

HOST AN EVENT

Hold a conversation, conduct a forum, or throw a party to get more signatures on this declaration.

[LEARN MORE →](#)

KANSAS ENVIRONMENTAL LEADERSHIP

Apply to a program.

[LEARN MORE →](#)

DONATE

Give to CEP.

[LEARN MORE →](#)



KANSAS **CLIMATE + HEALTH** DECLARATION

**WE DECLARE OUR COMMITMENT
TO A HEALTHIER FUTURE FOR ALL.**

WWW.RESILIENTKANSAS.ORG



Rachel Myslivy

Assistant Director, Climate + Energy Project

myslivy@climateandenergy.org

www.climateandenergy.org

