



Climate Protection Plan and Sustainability Update

Jasmin Moore

Sustainability Director



City of Lawrence
Douglas County





OVERVIEW

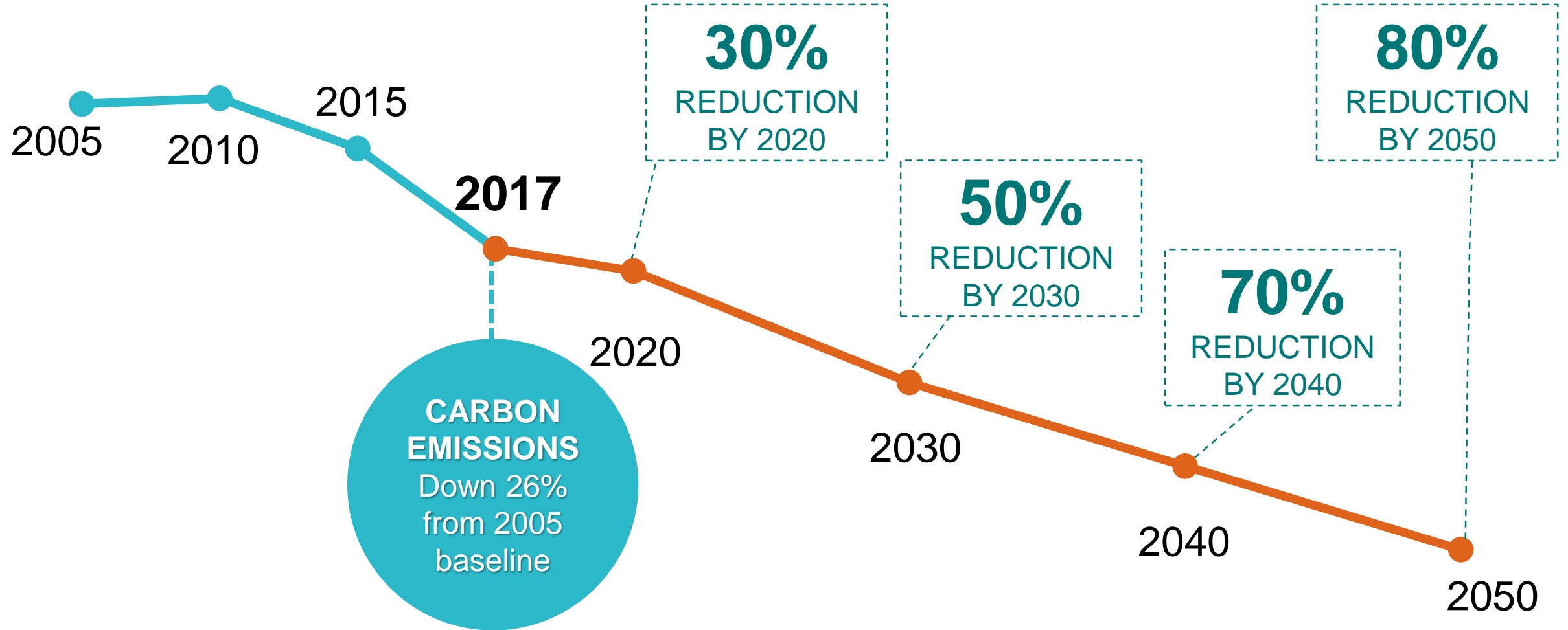
- Guiding frameworks for sustainability
- Timeline of milestones
- Global, national, and local context
- Climate Protection Plan Recommendations + Progress
- STAR Framework, Certification + Progress
- Opportunities in the next decade

Climate Protection Plan 2009



Peak Oil Report 2011

GHG Reduction Goals for Lawrence



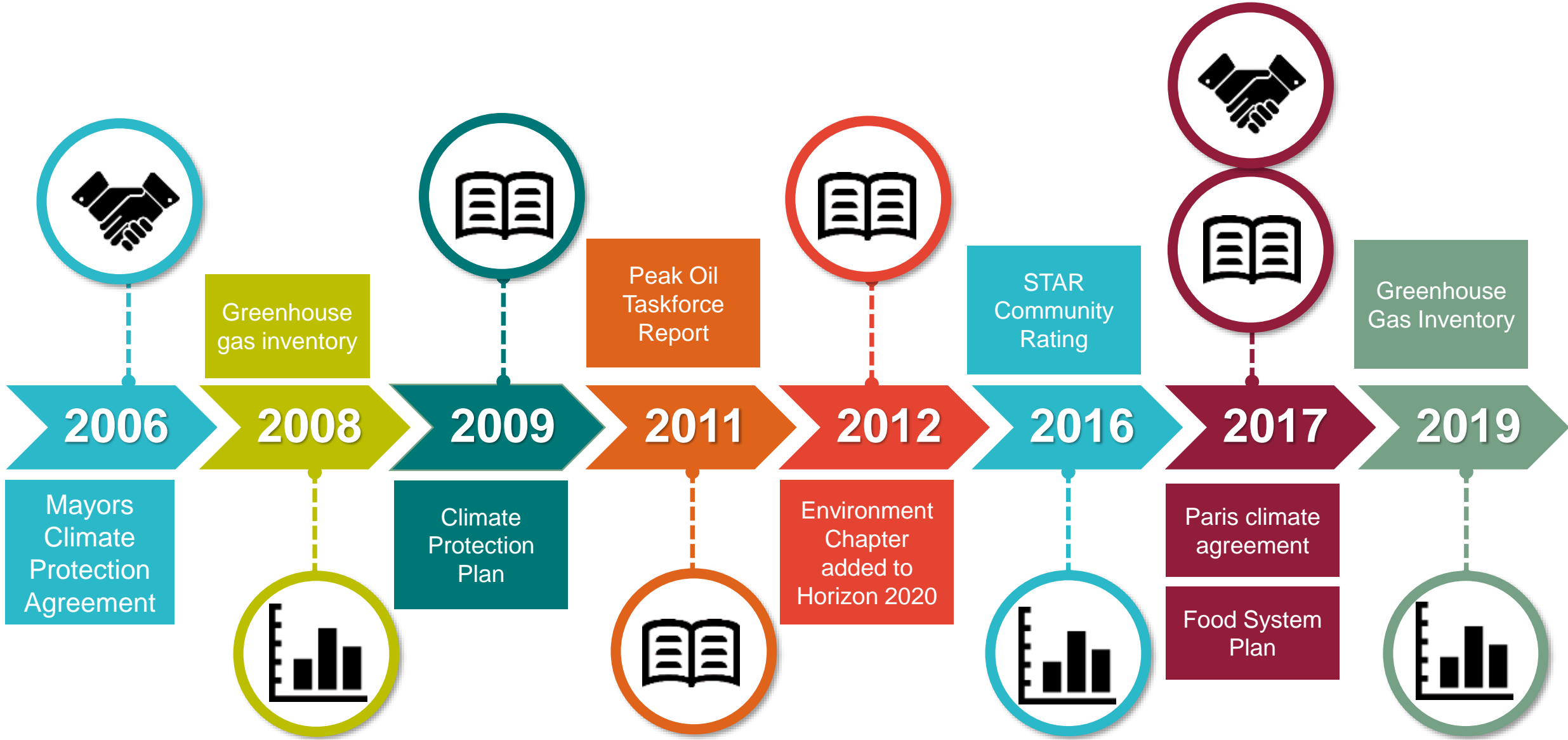


Global, national, and local context



A Decade of Progress

ection



Climate Protection Plan Recommendations

Dedicated Staffing &
Funding

Establish Outreach and
Education Programs

Strengthen Energy Conservation
Policies & Building Standards

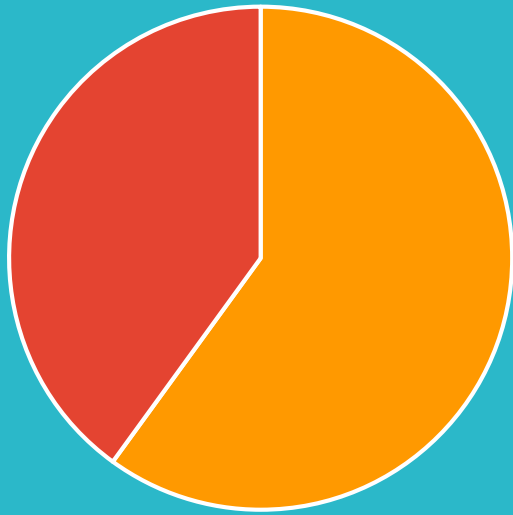
Water and Waste
Reduction

Incorporate reduction of GHG
in to Land Use Planning

Leadership in Municipal
Operations

Improve Transportation
Efficiency

Dedicated Staffing & Funding to Support Climate Protection and Sustainability Initiatives



Joint city and county
Sustainability Office
created in 2010



2 full-time professional
Sustainability Office staff:
Director & Food System and
Sustainability Planner



Program budget funded
from the County and City
General Fund

CPP RECOMMENDATIONS	1	2	3	4	5	6	7
------------------------	---	---	---	---	---	---	---

Strengthen Energy Conservation Policies and Building Standards



Enhanced building codes to increase energy efficiency in new constructions and remodeling work



Created economic incentives to encourage construction of energy and water efficient certified buildings



Reduced building permit fees for installing solar PV or solar thermal projects in Lawrence

CPP RECOMMENDATIONS	1	2	3	4	5	6	7
------------------------	---	---	---	---	---	---	---

Incorporate reduction of GHG in to Land Use Planning



Adoption of Chapter
16 in Horizon 2020



Complete Streets
policy adopted and
recently revised



Adopted Countywide
Bikeway System Plan
and T2040

CPP RECOMMENDATIONS	1	2	3	4	5	6	7
------------------------	---	---	---	---	---	---	---

Improve Transportation Efficiency



Recently approved
city-wide traffic
signal coordination
and timing study



Lawrence Transit & KU
Wheels partnership



Dedicated funding for
pedestrian and bicycle
infrastructure

CPP RECOMMENDATIONS	1	2	3	4	5	6	7
------------------------	---	---	---	---	---	---	---

Establish Outreach and Education Programs



Ongoing engagement and presentations with school and community groups



Take Charge Challenge against Manhattan



Mayor's Challenge for Water Conservation
MyWaterPledge.com

CPP RECOMMENDATIONS	1	2	3	4	5	6	7
------------------------	---	---	---	---	---	---	---

Water and Waste Reduction



Curbside single-stream recycling



EcoFlow Program



Yard Waste Composting

CPP RECOMMENDATIONS	1	2	3	4	5	6	7
------------------------	---	---	---	---	---	---	---

Leadership in Municipal Operations



Green Bonds



Energy Efficiency in
municipal facilities



Common Ground

CPP RECOMMENDATIONS	1	2	3	4	5	6	7
------------------------	---	---	---	---	---	---	---

Community
greenhouse gas
emissions

↓ 26%

Municipal
greenhouse gas
emissions

↓ 17%

Climate Protection Plan 2009

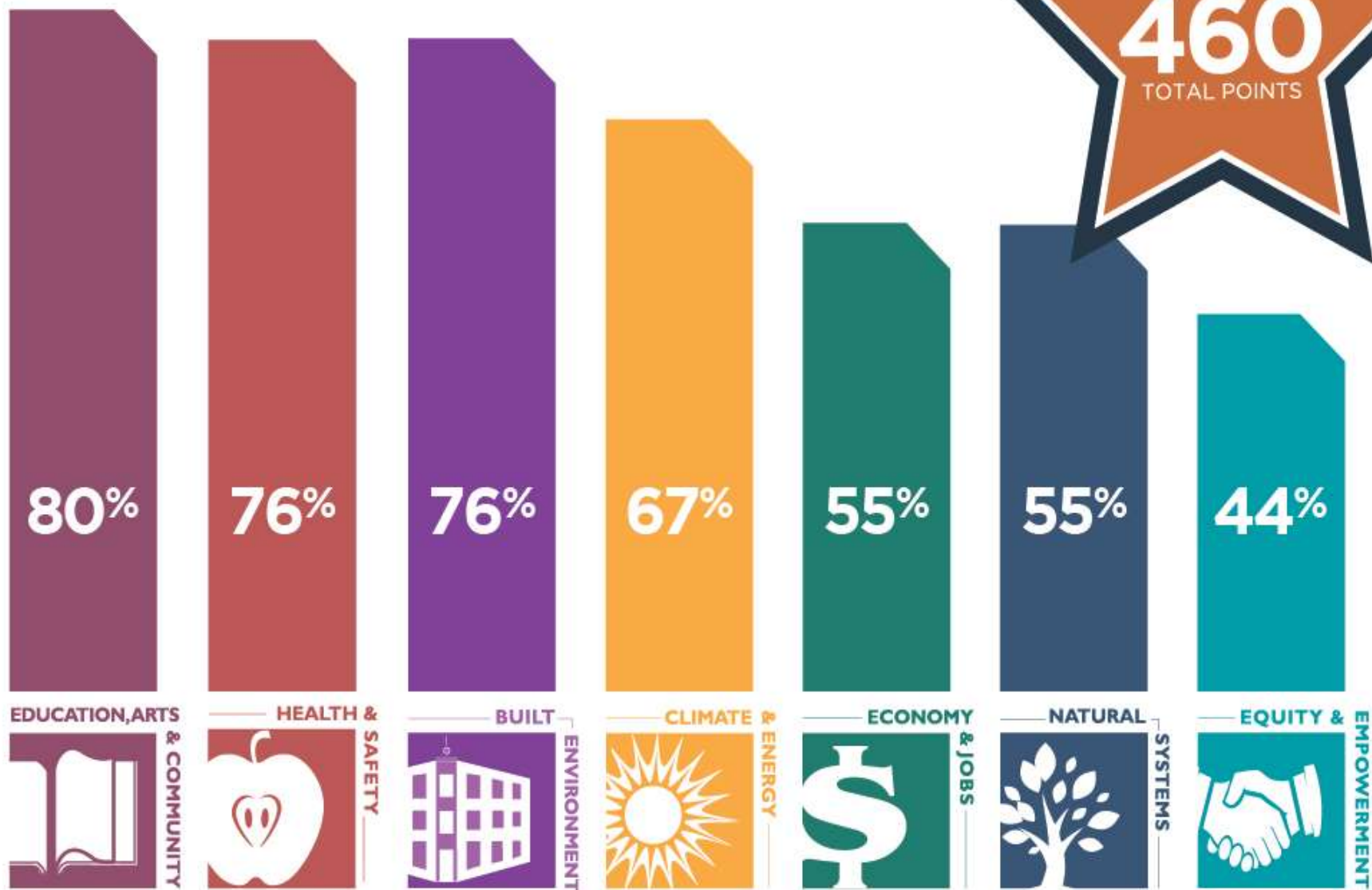


STAR Community Rating 2016

Peak Oil Report 2011

STAR GOAL AREAS

% OF AVAILABLE POINTS AWARDED



Built Environment	Climate & Energy	Economy & Jobs	Education, Arts, & Community	Equity & Empowerment	Health & Safety	Natural Systems	Innovation & Process
BE-1: Ambient Noise & Light	CE-1: Climate Adaptation	EJ-1: Business Retention & Development	EAC-1: Arts & Culture	EE-1: Civic Engagement	HS-1: Active Living	NS-1: Green Infrastructure	IP-1: Best Practices & Processes
BE-2: Community Water Systems	CE-2: Greenhouse Gas Mitigation	EJ-2: Green Market Development	EAC-2: Community Cohesion	EE-2: Civil & Human Rights	HS-2: Community Health	NS-2: Biodiversity & Invasive Species	IP-2: Exemplary Performance
BE-3: Compact & Complete Communities	CE-3: Greening the Energy Supply	EJ-3: Local Economy	EAC-3: Educational Opportunity & Attainment	EE-3: Environmental Justice	HS-3: Emergency Management & Response	NS-3: Natural Resource Protection	IP-3: Local Innovation
BE-4: Housing Affordability	CE-4: Energy Efficiency	EJ-4: Quality Jobs & Living Wages	EAC-4: Historic Preservation	EE-4: Equitable Services & Access	HS-4: Food Access & Nutrition	NS-4: Outdoor Air Quality	IP-4: Good Governance
BE-5: Infill & Redevelopment	CE-5: Water Efficiency	EJ-5: Targeted Industry Development	EAC-5: Social & Cultural Diversity	EE-5: Human Services	HS-5: Health Systems	NS-5: Water in the Environment	
BE-6: Public Parkland	CE-6: Local Government GHG & Resource Footprint	EJ-6: Workforce Readiness	EAC-6: Aging in the Community	EE-6: Poverty Prevention & Alleviation	HS-6: Hazard Mitigation	NS-6: Working Lands	
BE-7: Transportation Choices	CE-7: Waste Minimization				HS-7: Safe Communities		

*Referenced in previous climate plans

Additional actions steps towards progress



- Housing Affordability
- Public Spaces
- Social & Cultural Diversity
- Civic Engagement
- Voter Turnout Rate

- Community Health & Health System
- Safe Communities
- Green Stormwater Infrastructure
- Natural Resource Protection



STAR Integration

STAR provides opportunity to support current community planning efforts:

- Comprehensive Plan re-write (Plan 2040)
- City Commission Strategic Planning & Metrics
- Community Health Plan
- Food System Plan
- T2040 Transportation Plan



City of Lawrence



What we've
learned

Flooding prompts closure of county road south of Lawrence

Because of high water, the Douglas County Sheriff's Office closed shortly after 3 p.m. Sunday the roadway from the intersection of East 1000 Road and North 1075 Road to the intersection of North 1200 and East 1135 Road.

Summer storms drench Kansas City with 9 inches of rain

BY ROBERT A. CRONKLETON
bcronkleton@kcstar.com

Rainfall totals
From Aug. 20 - Aug. 21



Summer storms have drowned Kansas City with nearly three times the normal amount of rain since July. The storms dumped as much as 9 inches of rain on Kansas City overnight Monday, causing historic flooding. It was the third time in less than a month where many parts of the metro area saw more than 6 inches of rain, according to the National Weather Service in Pleasant Hill.

Climate report warns of growing risk and terrible costs for US

BY SETH BORENS
Associated Press

WASHINGTON

As people rebuke two major hurricanes in California's catastrophic wildfires recede, a new federal report that these types of weather disasters are increasing in the United States. The White House

creasing occurrence," said report co-author Kristie Ebi, a University of Washington public health professor. She said global warming is already harming people's



Evacuation orders were issued Tuesday for Olathe, a northwest Missouri. According to Mayor Rhonda Hunsinger, 26 residents decided to stay until they couldn't stay any longer. Lewis and Clark Village was largely evacuated.

Town near Atchison 'self-evacuating' as flooding threatens


because they know the situation," Hunk said. "Whether the levees hold or not, Hunk said there would probably be some flooding."

"The water is going to come to the top of the levee, and if we come to the top of the levee on Friday and they're talking about another one and a half to two feet more, we're going to have some serious flooding of the town for sure," Hunk said.

BY SETH BORENS
Associated Press

partly along the river in Lawrence are flooded and some north of St. Joseph are inundated, with some

low will be reached when conditions make it safe to drive," the park's website said.



What does the
next decade
hold?

Local Governments are taking bolder actions

CLIMATE GENTRIFICATION

Has Climate Gentrification Hit Miami? The City Plans to Find Out

By onEarth | Mar. 11, 2019 11:05AM EST

CLIMATE



Missoula Co. adopts resolution to go carbon-free

by McKayla Haack | Thursday, March 14th 2019



NEXT
CITY

Inspiring Better Cities

Kansas City Will Make Its Government 100 Percent Carbon-Free by Next Year



RACHEL KAUFMAN

MARCH 12, 2019



HIGH IMPACT PRACTICES FOR LOCAL GOVERNMENTS TO REDUCE EMISSIONS



The background of the slide is a photograph of a bright blue sky filled with numerous white, fluffy clouds of varying sizes. The clouds are scattered across the frame, with some appearing more dense and others more wispy. The overall lighting is bright and natural, suggesting a clear day.

CLIMATE RESILIENCE AND ADAPTATION

ACKNOWLEDGEMENTS

- Climate Protection Task Force members
- Peak Oil Task Force members
- Current and past Sustainability Advisory Members
- Current and past City and County Commissioners
- Community Organizations
- Residents of Lawrence
- Community data partners
- Diane Stoddard
- Craig Weinaug & Sarah Plinsky
- Eileen Horn
- Helen Schnoes
- Sustainability interns
- City of Lawrence and Douglas County staff



“I have
discovered in
life that there
are ways of
getting almost
anywhere you
want to go, if
you really want
to go.”

— Langston
Hughes

