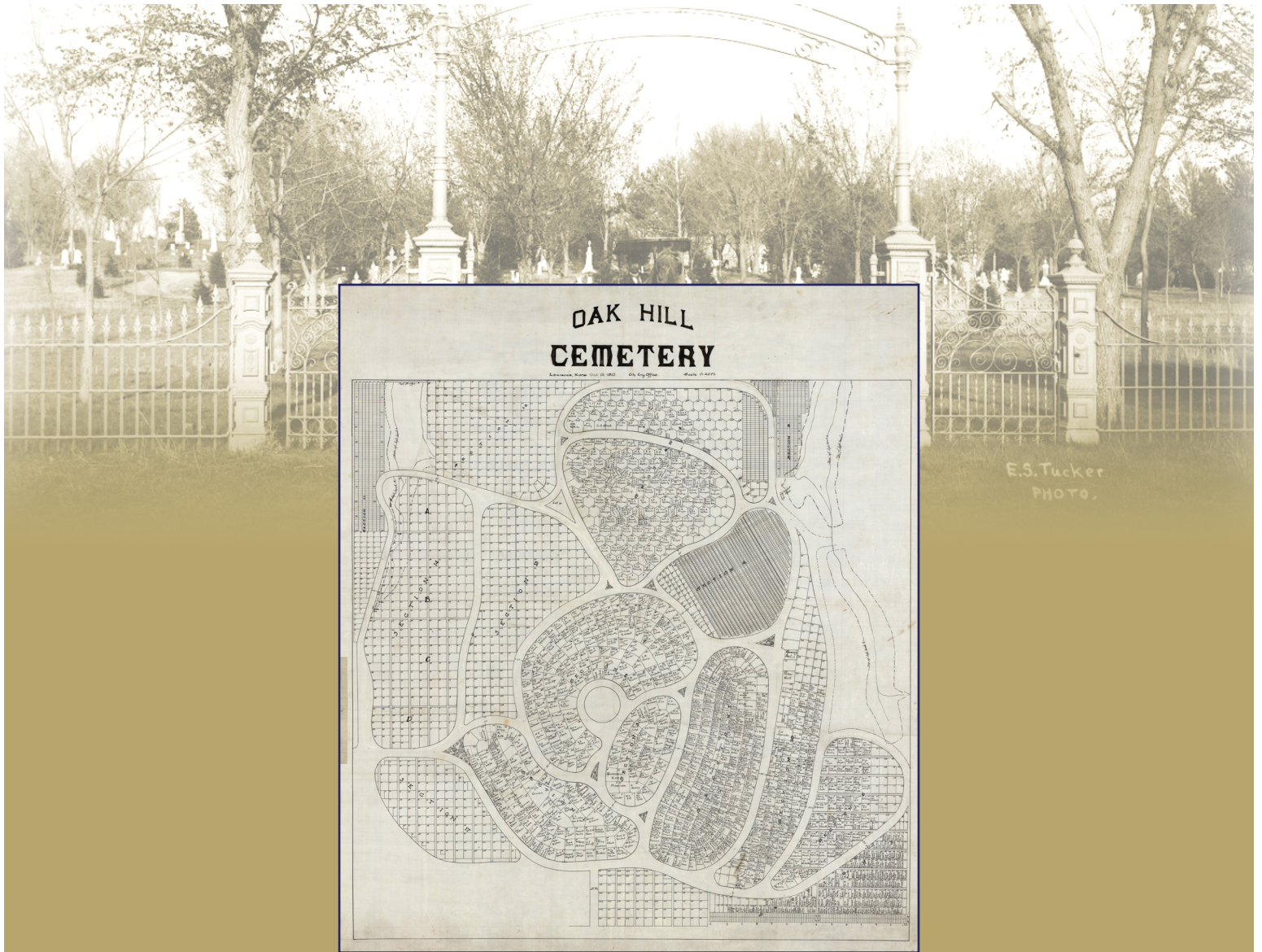




City of Lawrence

WHAT IS A RURAL CEMETERY?



Teaching with Oak Hill Cemetery

TABLE OF CONTENTS

About This Lesson:

1. Learning Activity
2. Kansas HGSS Standards Addressed
3. Materials
4. Number of Class Periods
5. Preparation for Lesson
6. Activity Background (For the Teacher)
7. Activity Steps
8. Lesson Extension

Handouts:

1. Secondary Sources
2. Secondary Sources Analysis
3. Map of Mount Auburn Cemetery
Boston, Massachusetts
4. Map of Greenwood Cemetery
New York City, New York
5. Map of Oak Hill Cemetery
Lawrence, Kansas
6. Primary Sources Analysis

This publication has been financed in part with Federal funds from the National Park Service, a division of the United States Department of the Interior, and administered by the Kansas State Historical Society. The contents and opinions, however, do not necessarily reflect the view or policies of the United States Department of the Interior or the Kansas State Historical Society.

This program receives Federal funds from the National Parks Service. Regulations of the U. S. Department of the Interior strictly prohibit unlawful discrimination in departmental Federally Assisted Programs on the basis of race, color, national origin, age or handicap. Any person who believes he or she has been discriminated against in any program, activity or facility operated by a recipient of Federal assistance should write to: Office of Equal Opportunity, National Park Service, 1849 C Street, NW, Washington, DC 20240.

Welcome

This lesson is part of a series of Kansas standards-based lessons developed to enable students to understand, summarize, and evaluate materials provided related to the history, design and development of Oak Hill Cemetery. Each lesson was designed to stand-alone, but they may be used in multiple combinations to suit the needs of the educator. Taken together they tell a rich history of Kansas and Oak Hill Cemetery. This series is inspired by the National Park Service Teaching with Historic Places standards.

In the "What is a Rural Cemetery?" lesson students will be asked to analyze and evaluate the similarities and differences between Oak Hill, Greenwood, and Mount Auburn Cemeteries. Using a step-by-step process, students will acquire historical thinking skills and learn to analyze and assess primary and secondary source materials. Through close reading and comparative analysis students will make logical inferences building on the central question "What is a Rural Cemetery?"

In the "Symbolism in the Cemetery" lesson students will analyze the symbology utilized on grave markers in Oak Hill Cemetery. Using a step-by-step process they will acquire historical thinking skills and learn to read the meaning of these commemorative graphical depictions.

In the "Civil War Veterans" lesson students will investigate the histories of Civil War Veterans buried at Oak Hill Cemetery. Using a step-by-step process, students will acquire historical thinking skills, work with and organize data, and learn to analyze and assess primary and secondary source materials. Lastly, students will research and produce a story covering a Civil War Veteran's history.

In the "People of Oak Hill" lesson students will explore the lives of notable Kansans buried at Oak Hill Cemetery. Using a step-by-step process, students will acquire historical thinking skills and will organize and analyze data. Lastly, students will develop and defend position statements and opinions about the importance of the contributions these Kansans have made to our society.

Acknowledgements

The authors thank the City of Lawrence and Lawrence Parks and Recreation for their support and assistance in developing these lesson plans. In particular, we thank Lynne Braddock Zollner and Mitch Young.

Additionally, we thank Mike Kelly, Amy Roust and John Nichols with Douglas County, Kansas. We are grateful to the helpful staff and valuable collections at the Spencer Research Library at the University of Kansas, the Kansas State Historic Society, and Monica Davis at the Watkins Museum of History/Douglas County Historical Society.

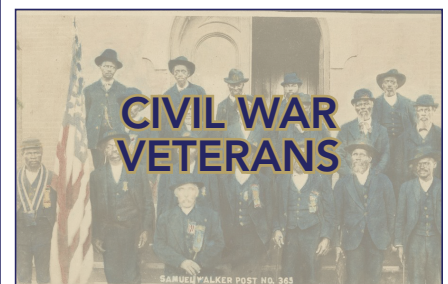
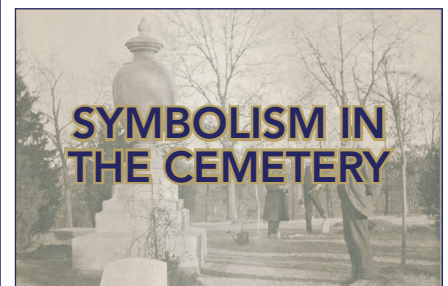
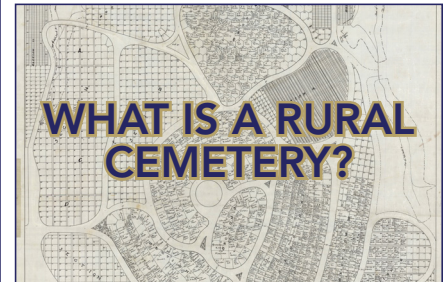
We would also like to acknowledge the following individuals that contributed to the understanding of Oak Hill Cemetery: Cathy Ambler and Katie Armitage.

*Lucinda Evans, Nathan McAlister, and TreanorHL.
September, 2016*

Cover photo credits:

West Entry of Oak Hill Cemetery from *Lawrence, Kansas: A Memorial Album*, E.S. Tucker, 1895
1913 Map of Oak Hill Cemetery, City of Lawrence Parks and Recreation

Lessons in
The Teaching with Oak Hill
Cemetery Unit



Lesson plan photo credits, top to bottom:
1913 Map of Oak Hill Cemetery,
City of Lawrence Parks and Recreation

Sexton McFarland with the Simmons
Family Urn in Section 8N, Douglas County
Historical Society, Watkins Community
Museum

GAR Samuel Walker Post 365, KansasMemory.org,
Kansas State Historical Society, Item 218628

Company H Monument, Section 8, TreanorHL

Oak Hill Cemetery: A Rural Cemetery?

Learning Activity: What is a Rural Cemetery?

Kansas HGSS Standards Addressed:

- **Standard 3.1**—The student will recognize and evaluate significant beliefs, contributions, and ideas of the many diverse peoples and groups and their impact on individuals, communities, states, and nations.
- **Standard 5.1**—The student will recognize and evaluate dynamic relationships that impact lives in communities, states, and nations.
- **Standard 5.4**—The student will use his/her understanding of these dynamic relationships to create a personal, community, state, and/or national narrative.

Applicable The Kansas Journey (1st ed.) Chapters: 4, 5, and 6

Materials:

1. Handout #1: Secondary Sources:
 - a. Landscape Architecture and the "Rural" Cemetery Movement, by Patricia Finney
 - b. History and Development of Greenwood Cemetery, by Grant Peckenschneider
2. Handout #2: Secondary Sources Analysis Sheet for Students
3. Handout #3: Primary Source: Map of Mount Auburn Cemetery, Boston
4. Handout #4: Primary Source: Map of Green-Wood Cemetery, New York City
5. Handout #5: Primary Source: Map of Oak Hill Cemetery, Lawrence
6. Handout #6: Primary Source Analysis Sheet for Students

Number of Class Periods: Two

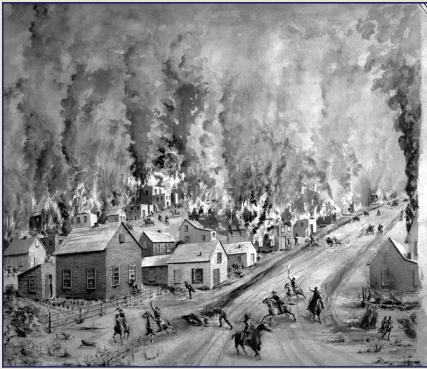
Preparation for Lesson:

The activities for this lesson include 4 handouts and 2 analysis sheets. Student groups will receive each handout and the analysis sheet. Familiarize yourself in advance with each of the handouts, secondary reading, and the analysis sheet.

Activity Background (For the Teacher):

After Quantrill's Raid in 1863, Lawrence survivors began to search for ways to memorialize those killed in the attack. In 1864, the mayor urged the city to build a new cemetery since most raid victims were buried in Pioneer (historically Oread) Cemetery and it was far from town and difficult to maintain. A local newspaper editor helped gain public support of the project when he wrote that raid victims buried at Pioneer were forgotten and their graves unmarked.

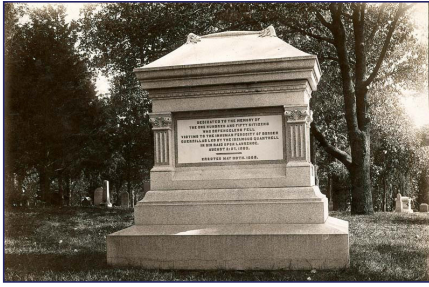
Early in 1865, the city purchased land for a new cemetery. Instead of a simple, open cemetery like Pioneer, Lawrence's city leaders wanted a rural cemetery, which was the popular trend in cemetery design at the time. Rural Cemeteries were garden cemeteries landscaped to show human interpretations of nature as art. Graceful winding pathways and plentiful trees were fundamental to rural cemetery design, as were large plots for the display of grand monuments. Oak Hill's historic entry at the west side of the cemetery had an elegant and decorative cast iron gate and fence, and parts of it remain in today's entrance.



"Quantrill's Raid" by Laurretta Fisk,
KansasMemory.org, Kansas State Historic Society,
Item 665



West Entrance of Oak Hill Cemetery
Lawrence, Kansas: A Memorial Album
E.S. Tucker, 1895



Monument to honor victims of Quantrill's Raid,
Oak Hill Cemetery Lawrence, KS
KansasMemory.org, Kansas State Historic Society,
Item 487

Oak Hill Cemetery became an important place for those who wished to commemorate that terrible day in August 1863. For many years, citizens sponsored elaborate Decoration Day observances at Oak Hill, and by 1895, a local committee had raised funds to erect a monument to the raid's victims. The city continued to further improve the cemetery through the late 1890s by bringing city water to the site and building a sidewalk from the downtown area.

There are so many individuals buried in Oak Hill who were influential during territorial days and the state's formation that William Allen White once call the cemetery, "The Kansas Arlington."¹

Activity Steps:

1. Introduction reading and discussion.
 - a. Ask students to brainstorm what they know about the design and purpose of cemeteries. Obviously, the main purpose of a cemetery is for the burial of the dead. However, challenge students to come up with other possible purposes for a cemetery. Have students draw out a basic design of a cemetery.
 - b. Record student answers and share their designs. Discuss their commonalities and differences.
 - c. Wrap up: Ask students the Learning Activity question: What is a Rural Cemetery?
2. Secondary Sources and Discussion.
 - a. Read each of the secondary readings.
 - i. **Landscape Architecture and the "Rural" Cemetery Movement, by Patricia Finney**
 - ii. **History and Development of Greenwood Cemetery, by Grant Peckenschneider**
 - b. Upon completing the readings place students into groups of two, three, or four. Handout the document analysis sheet for each group to complete.
 - c. Discuss and Record the key elements of a Rural Cemetery. This list should include the following:
 - i. Natural/Park like setting
 - ii. Hills
 - iii. Trees
 - iv. Winding Roads
 - v. Artistic Tombstones
 - d. Explain to the students, that with a better understanding of what makes a Rural Cemetery a Rural Cemetery they will compare Oak Hill Cemetery and two other cemeteries, evaluate their key elements, and debate their status as a Rural Cemeteries.
3. Place students into new groups of two, three, or four and give groups handouts 3, 4, 5, and 6 from the materials list.
 - a. Have students complete the comparative analysis.
 - b. Wrap up: Revisit activity #2 asking the students about the design and purpose of a cemetery.

Lesson Extensions:

1. To be used in conjunction with other Oak Hill Cemetery lessons. Take students on a field trip to Oak Hill on a walking tour identifying the key elements of the Rural Cemetery.
2. Have student groups look up each cemetery on Google earth and identify key elements of a Rural Cemetery and present their findings to the class.

Additional Resources:

Ambler, Cathy. "A Place Not Entirely of Gloom: Oak Hill Cemetery and the Rural Cemetery Movement." *Kansas History: A Journal of the Central Plains* (Winter 1992/1993): p. 240-253

¹ "City of Lawrence, Kansas." Oak Hill Cemetery • City of Lawrence, Kansas. N.p., n.d. Web. 13 Aug. 2016.

OAK HILL CEMETERY: Secondary Sources

Landscape Architecture and the "Rural" Cemetery Movement, by Patricia Finney [abridged]

As the 19th century progressed, towns grew to cities, and population increased proportionally. For reasons of public health and overcrowding, burial grounds began to be located outside of population centers, no longer on church ground. These cemeteries spawned the "Rural" Cemetery Movement, beginning in 1831 with Mount Auburn, Boston; Laurel Hill, Philadelphia (1836); Green-Wood, N.Y. (1838); Lowell, Mass. (1841); Evergreen, Portland, Maine (1855); Forest Hill, Madison, Wisc. (1858); and countless others as the country and movement expanded.

The rural cemetery was designed with romantic vision, based upon English landscape gardening. Nature, in contrast to an increasingly urban setting, was idealized and sought out; cemeteries, located close to the city, were consciously designed to provide sanctuary, solitude, quiet, adornment, and beauty. It was common, especially on Sundays, for full families to picnic in cemeteries "taking long walks in the peaceful setting, thinking about the past and the future, and keeping a little bit of history alive for themselves."²

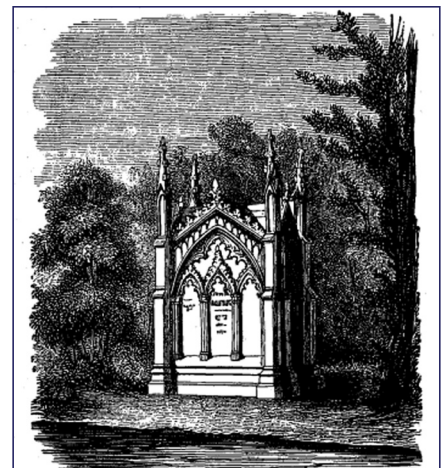
History and Development of Greenwood Cemetery, by Grant Peckenschneider [abridged]

Promoters of the rural cemetery movement wanted to change the horrible image cemeteries had received over the years and replace it with an image of peacefulness surrounded by nature. A new appreciation of nature began. Nature's gifts were interwoven with the layout of rural cemeteries. Cemeteries and tombstone markers would melt into the landscape in perfect harmony. Hills and trees were left alone and formed part of the cemetery's attraction. Roads followed the contours of the landscape. The roads there are winding, hilly, and follow the landscape. This is a typical characteristic of the rural cemetery movement. Many rural cemeteries are placed among huge shade trees. This phenomenon is another sign of the rural cemetery movement.

Visitors to these new rural cemeteries, especially in the case of Mount Auburn, included not only the families of loved ones buried in the cemetery, but also those wanting to experience the peacefulness and serenity of a beautiful park. Tombstones became a form of art themselves. Masons and sculptors began to use the tombstone as a medium through which to express their artistic abilities.³



Sunday visitors to Green-Wood Cemetery.
Cleaveland, Nehemiah and James Similie.
Green-Wood Illustrated. New York: R. Martin,
1847.



Ornamental mausoleum of a Rural Cemetery.
Smith, J. Jay. Designs for Monuments and Mural
Tablets. New York: Bartlett & Welford, 1846.

² Finney, Patricia J. "Landscape Architecture and the 'Rural' Cemetery Movement." *Focus on Global Resources: Resources in Agriculture* 4th ser. 31. Summer 2012 (2012): 6-8. Center for Research Libraries. Global Resources Network, 2012. Web. 13 Aug. 2016

³ Connors, Thomas and Grant Peckenschneider. "History and Development of Greenwood Cemetery." *Greenwood Cemetery Home Page*. University of Northern Iowa and Cedar Falls Historical Society, 7 Dec. 1998. Web. 13 Aug. 2016.

OAK HILL CEMETERY: Secondary Sources Analysis

Name (s) _____ Period _____ Date _____

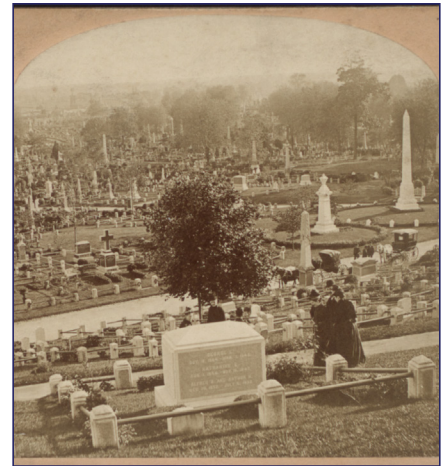
Activity Analysis: Landscape Architecture and the "Rural" Cemetery Movement and History and Development of Green-Wood Cemetery

As the 19th century progressed, towns grew to cities, and population increased proportionally. For reasons of public health and overcrowding, burial grounds began to be located outside of population centers, no longer on church ground. These cemeteries spawned the "Rural" Cemetery Movement, beginning in 1831 with Mount Auburn, Boston; Laurel Hill, Philadelphia (1836); Green-Wood, N.Y. (1838); Lowell, Mass. (1841); Evergreen, Portland, Maine (1855); Forest Hill, Madison, Wisc. (1858); and countless others as the country and movement expanded.

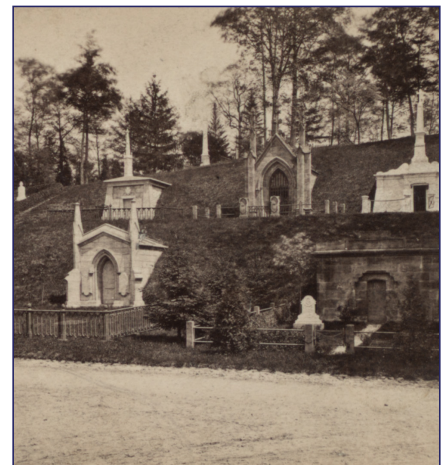
Using specific examples from the text, explain the purpose of the Rural Cemetery Movement:

The rural cemetery was designed with romantic vision, based upon English landscape gardening. Nature, in contrast to an increasingly urban setting, was idealized and sought out; cemeteries, located close to the city, were consciously designed to provide sanctuary, solitude, quiet, adornment, and beauty. It was common, especially on Sundays, for full families to picnic in cemeteries "taking long walks in the peaceful setting, thinking about the past and the future, and keeping a little bit of history alive for themselves."

In a few sentences, using words from the text, summarize this paragraph:



"Henry Ward Beecher's grave, Green-Wood Cemetery, N.Y., U.S.A." New York Public library Digital Collections.
<http://digitalcollections.nypl.org>.



"Monuments on Ocean Hill, Greenwood Cemetery." New York Public Library Digital Collections.
<http://digitalcollections.nypl.org>.

CONTINUED ON OTHER SIDE

OAK HILL CEMETERY: Secondary Sources Analysis (continued)

...A new appreciation of nature began. Nature's gifts were interwoven into the layout of rural cemeteries. Cemeteries and tombstone markers would melt into the landscape in perfect harmony. Hill and trees were left alone and formed part of the cemetery's attraction. Roads followed the contours of the landscape. The roads there are winding, hilly, and follow the landscape. This is a typical characteristic of the rural cemetery movement. Many rural cemeteries are placed among huge shade trees. This phenomenon is another sign of the rural cemetery movement.

Using specific examples from the text explain the purpose of the Rural Cemetery Movement:



"Hazel Dell, Mt. Auburn Cemetery." New York Public Library Digital Collections. <http://digitalcollections.nypl.org>.

Visitors to these new rural cemeteries, especially in the case of Mount Auburn, included not only the families of loved ones buried in the cemetery, but also those wanting to experience the peacefulness and serenity of a beautiful park. Tombstones became a form of art themselves. Masons and sculptors began to use the tombstone as a medium through which to express their artistic abilities.

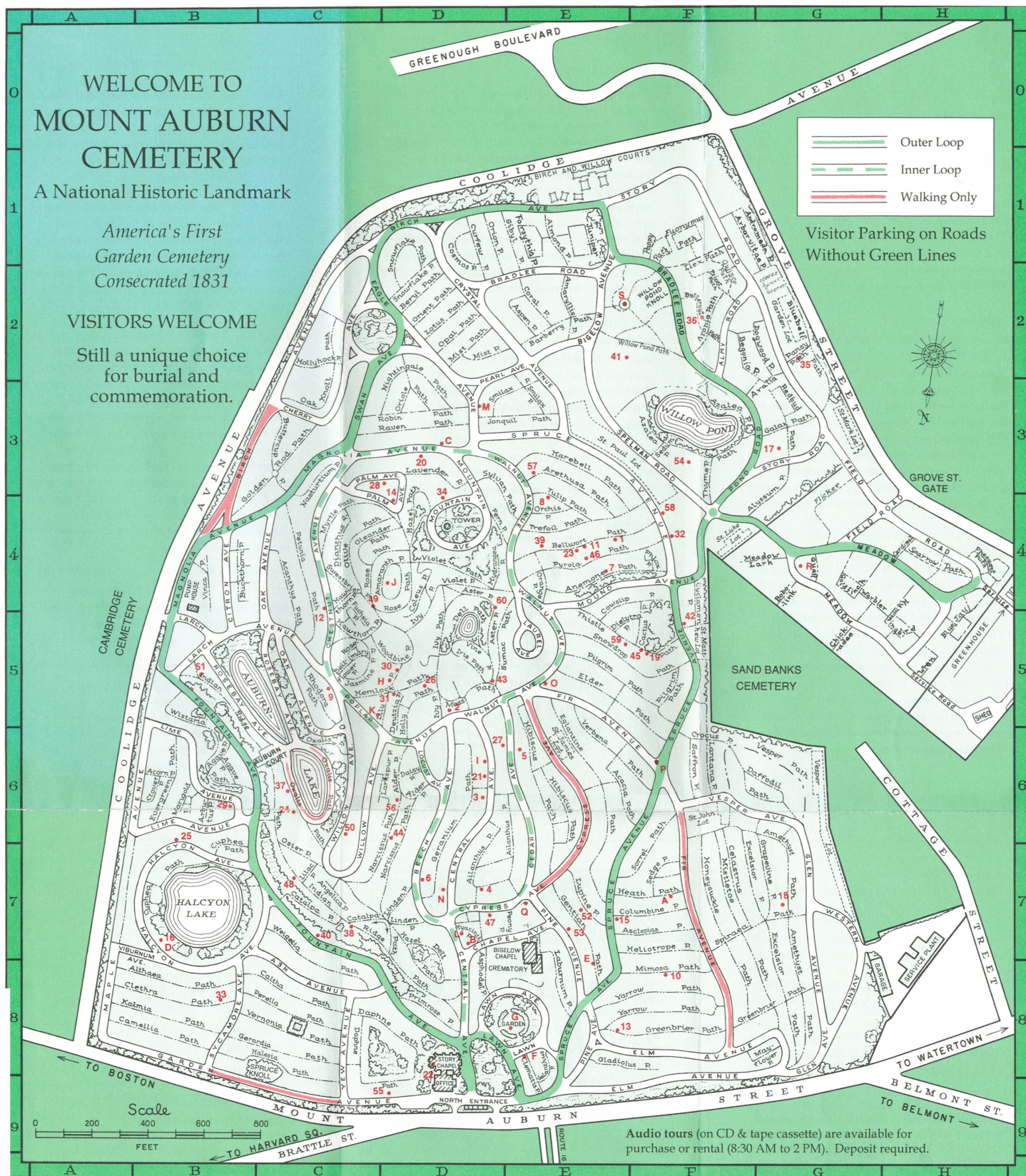
Summarize this paragraph using evidence from the text:



Mount Auburn Cemetery c. 1914, Stereograph image by Underwood & Underwood, Library of Congress Prints and Photographs Division, Washington D.C.

Using your own words summarize, "What is a Rural Cemetery?"

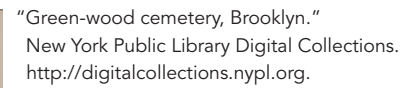
OAK HILL CEMETERY: Map of Mount Auburn Cemetery, Boston



OAK HILL CEMETERY: Map of Mount Auburn Cemetery, Boston (continued)



https://upload.wikimedia.org/wikipedia/commons/b/b6/Mount_Auburn_Cemeter__Misc_View.JPG

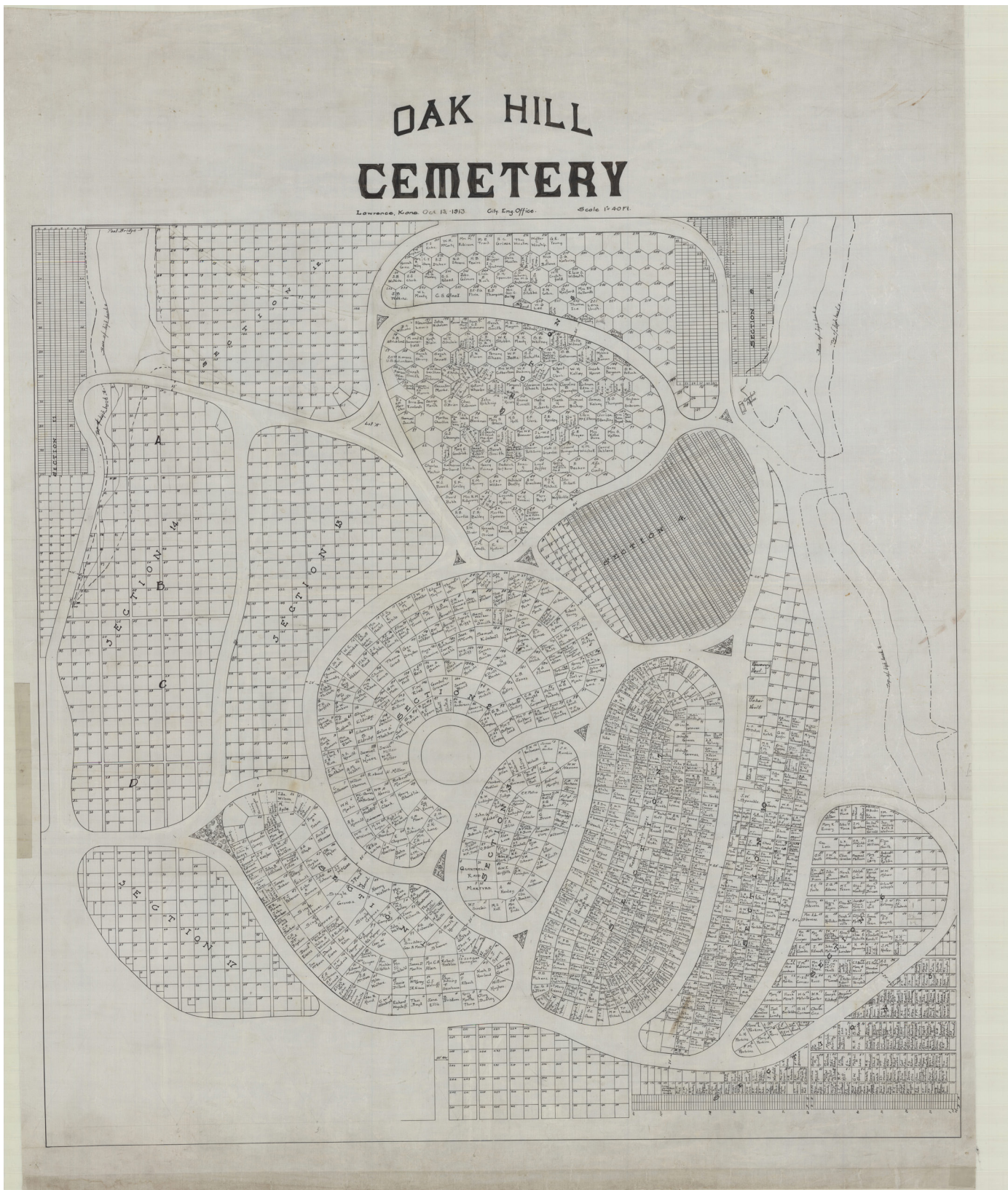


OAK HILL CEMETERY: Map of Greenwood Cemetery, New York City (continued)



https://upload.wikimedia.org/wikipedia/commons/7/7c/GreenWood_Cemetery,_Brooklyn.jpg

OAK HILL CEMETERY: Map of Oak Hill Cemetery, Lawrence



Map of Oak Hill Cemetery, 1913. City of Lawrence, Office of the City Engineer. Courtesy of the City of Lawrence. Parks and Recreation

OAK HILL CEMETERY: Map of Oak Hill Cemetery, Lawrence (continued)



All photo credits on this page:
TreanorHL 2016

OAK HILL CEMETERY: Primary Sources Analysis

Name (s) _____ Period _____ Date _____

Instructions:

- 1. Accessing your prior knowledge of a "Rural Cemetery" identify and compare the key elements of Mount Auburn (3), Greenwood (4), and Oak Hill (5) Cemeteries.**
- 2. When your group is finished with part one answer the assessment question, below.**



Oak Hill Cemetery Postcard, Lawrence P.C. & Novelty Company, Lawrence, KS c1914, Douglas County Historical Society, Watkins Community Museum

	Mount Auburn	Greenwood	Oak Hill
KEY ELEMENTS: record each key element for each cemetery			

How each is or is not a Rural Cemetery? Use specific examples from all sources to support your answer with evidence from the sources.