

# **City Field Operations Campus**

## **May 24th, 2022 Public Meeting**

<https://lawrenceks.org/mso/field-ops-campus/>

# Agenda

- 1** Recap: present need for campus
- 2** Review previous Master Plan – Option A
- 3** Review public comments: what we heard
- 4** Present Master Plan – Option B
- 5** Timeline and Next Steps
- 6** Q & A
- 7** Open House

We want to hear from you today! Please voice your opinions and communicate respectfully...

# Divisional Field Operations Need

## Field Operations Divisions

Streets

Stormwater

Traffic

Wastewater Collection

Water Distribution

Inspections

Central Maintenance Garage

Solid Waste

Facility Maintenance

Forestry

Horticulture

Household Hazardous Waste

**Master Plan Goal: Study consolidated campus for multiple Field Operations in need of critical improvements**



# Divisional Field Operations Need

**Strategic Plan Alignment:** a consolidated Field Operations Campus at the Farmland Site is the most cost effective way to address **multiple regulatory compliance issues** (structures in floodway, Farmland remediation); increase the **efficiency** of key City services; improve **working conditions** for staff and create a **sustainable**, energy-efficient and neighborhood-friendly operation into the future.



Facilities are critically undersized for current and future needs.



Facilities are in need of major operational and safety improvements.



Facilities are located in the Floodway--which is designed to carry water and debris.

# Divisional Field Operations Need

MSO

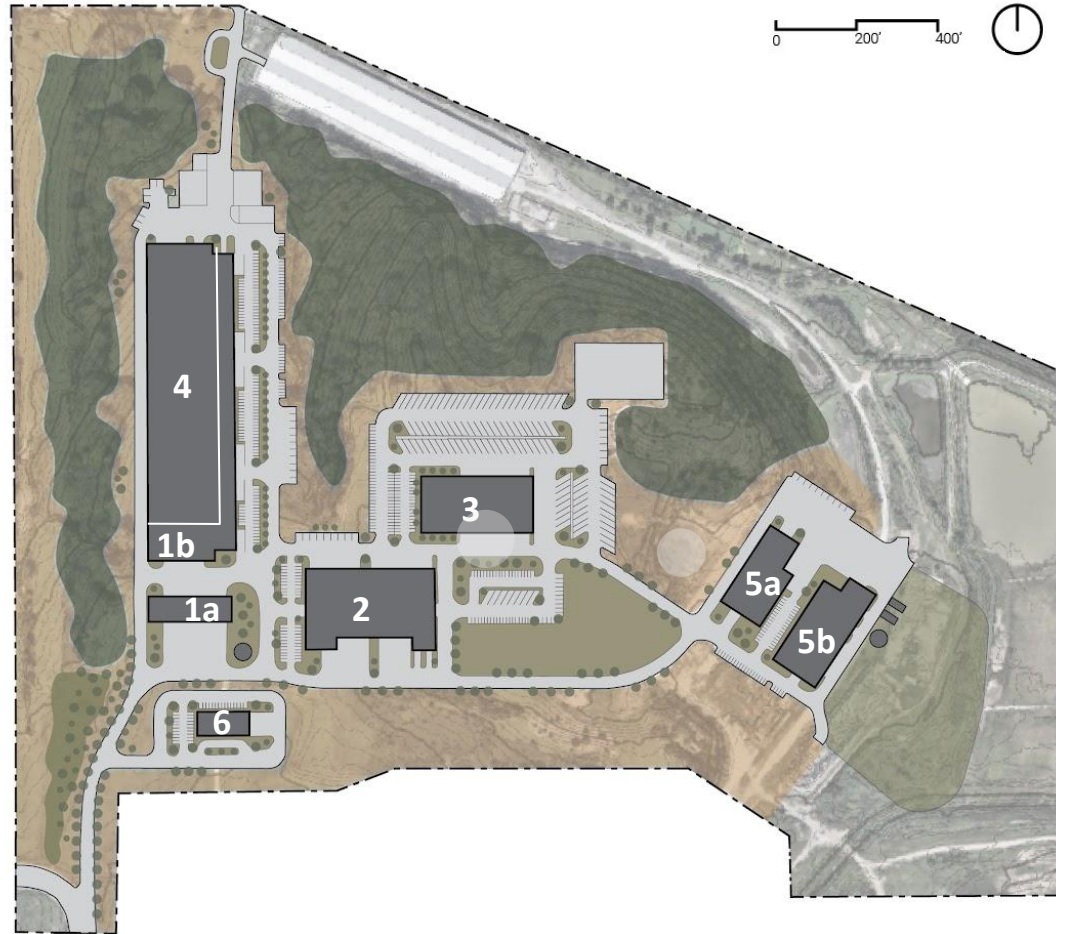
Division	Major deferred maintenance	Critically undersized	Site size limitations	Floodway restriction
<b>Streets</b>	Critical issue	Critical issue	Eventual issue	Critical issue
<b>Stormwater</b>	Critical issue	Critical issue	Eventual issue	Critical issue
<b>Traffic</b>	Critical issue	Critical issue	Critical issue	Adequate
<b>Wastewater Collection</b>	Eventual issue	Critical issue	Eventual issue	Adequate
<b>Water Distribution</b>	Eventual issue	Critical issue	Eventual issue	Adequate
<b>Inspections</b>	Eventual issue	Critical issue	Eventual issue	Adequate
<b>Central Maint. Garage</b>	Critical issue	Critical issue	Critical issue	Critical issue
<b>Solid Waste</b>	Eventual issue	Critical issue	Critical issue	Critical issue
Facility Maintenance	Critical issue	Adequate	Adequate	Adequate
Forestry	Eventual issue	Eventual issue	Critical issue	Adequate
Horticulture	Eventual issue	Eventual issue	Critical issue	Adequate
Household Hazardous Waste	Adequate	Adequate	Adequate	Adequate
<b>Fuel Island</b>	Eventual issue	Critical issue	Critical issue	Critical issue

Key

- Critical issue
- Eventual issue
- Adequate

# Master Plan Farmland Site Option A

- 1a. Fuel Island
- 1b. MSO Building: Streets, Stormwater, Water, Wastewater, Traffic and Inspections Divisions
- 2. Central Maintenance Garage
- 3. Solid Waste Division
- 4. MSO Conditioned Vehicle Storage
- 5a. Facility Maintenance Division
- 5b. Forestry and Horticulture Divisions
- 6. Household Hazardous Waste

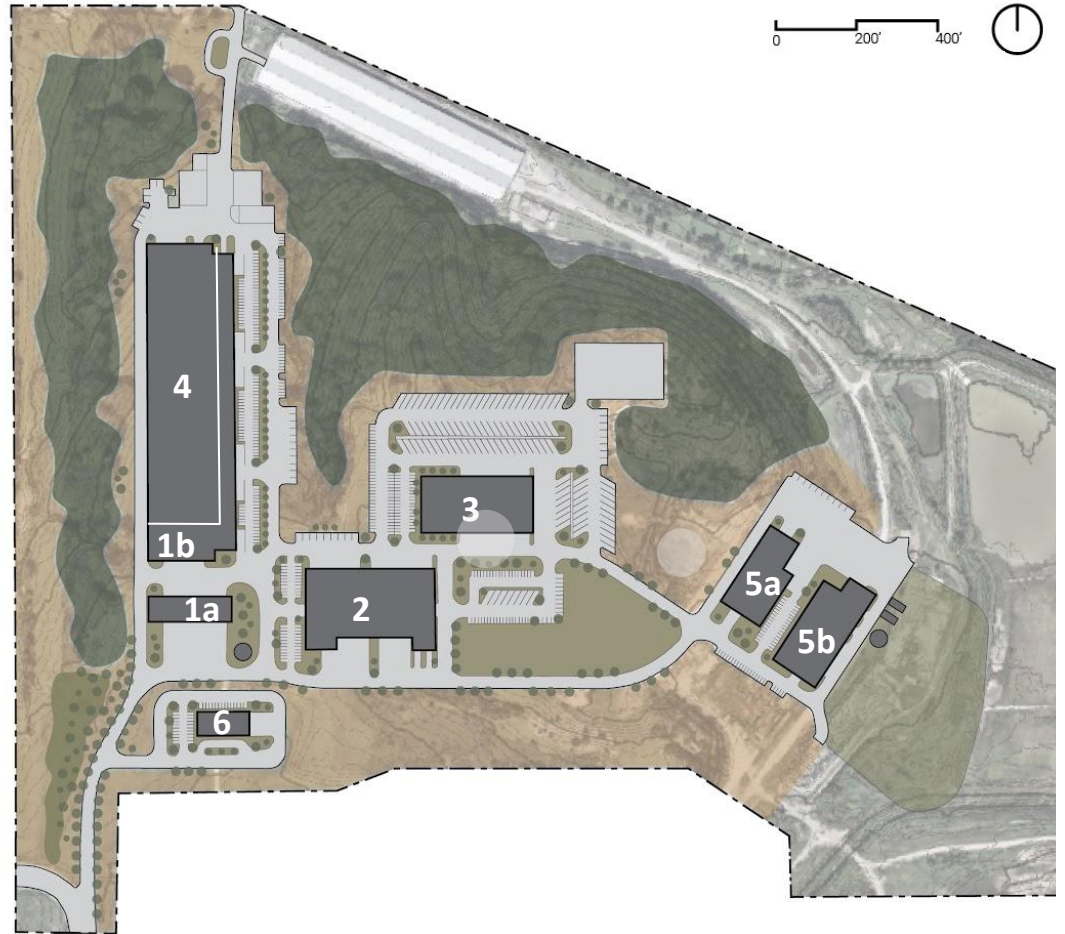




# Master Plan Farmland Site Option A

## Nighborhood Concerns

- Proximity to neighborhood
- Size of operation
- Unsightly views
- Noise disturbance
- Light pollution
- Traffic congestion
- Disruption of open space/ecosystem
- Property value destabilization
- Odors
- Site contamination
- Hazardous materials



















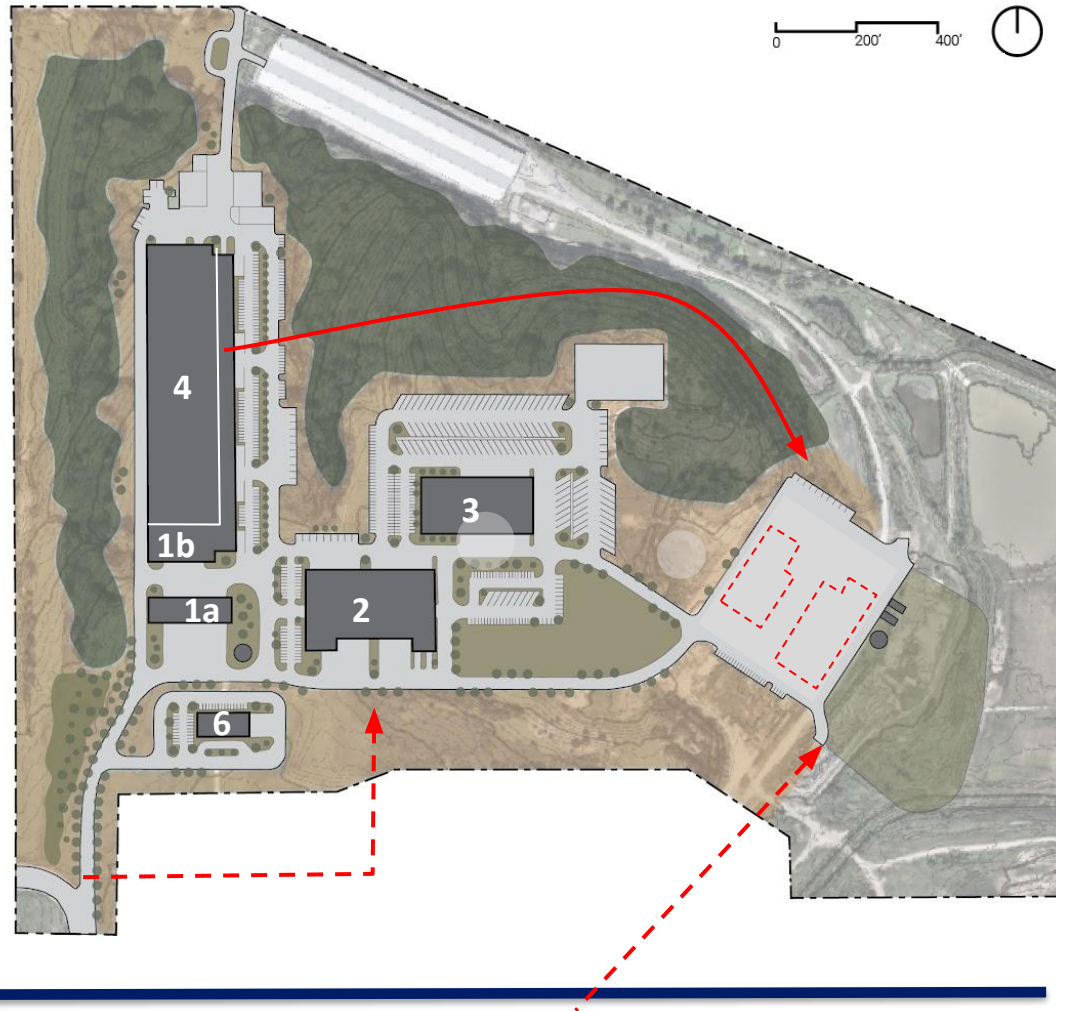




# Master Plan Farmland Site Option A

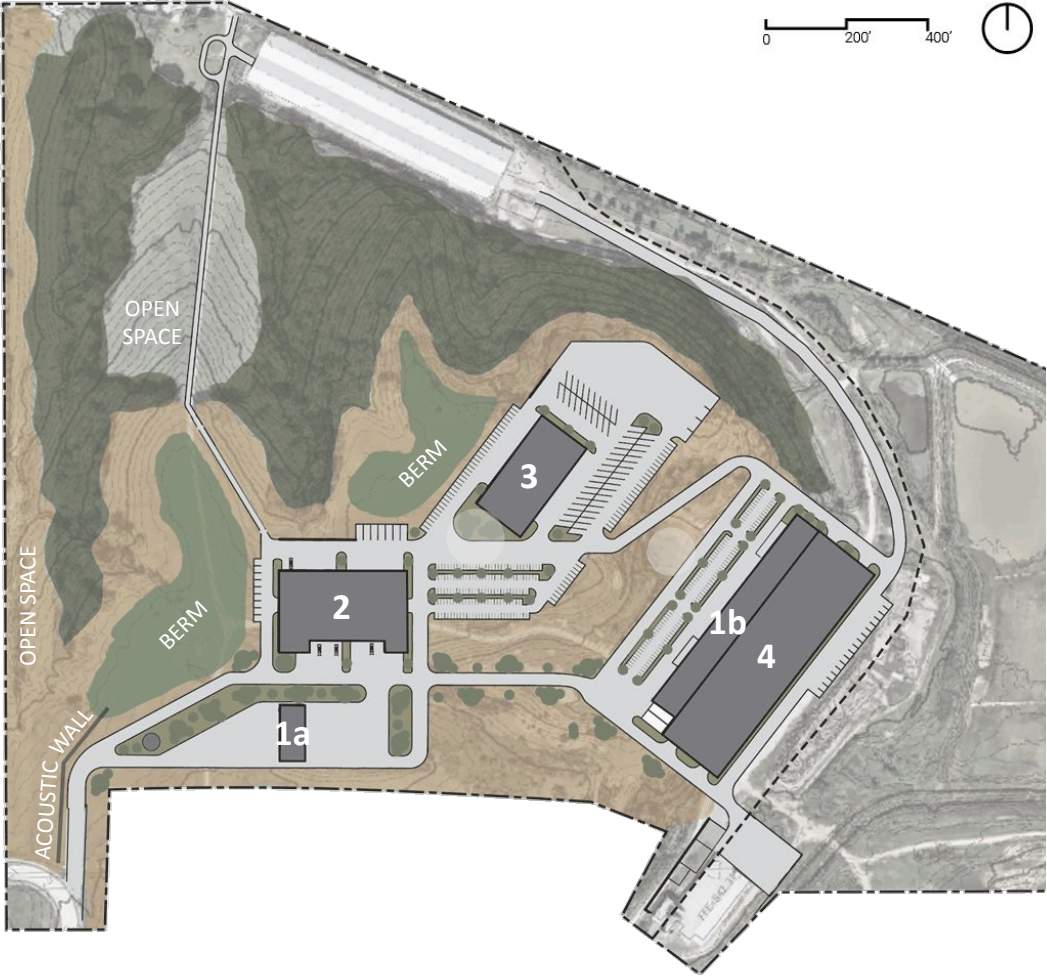
## Schematic Design Explorations

- Explore reducing operations on site by prioritizing MSO, Central Maintenance Garage, Solid Waste Divisions and fuel island.
- Study relocation of MSO operation to the east side of the campus.
- Preserve as much green space to the east as possible, as a natural buffer
- Explore strategies to limit sightlines and sound and to increase biodiversity.
- Explore alternate campus entrances



# Master Plan Farmland Site Option B

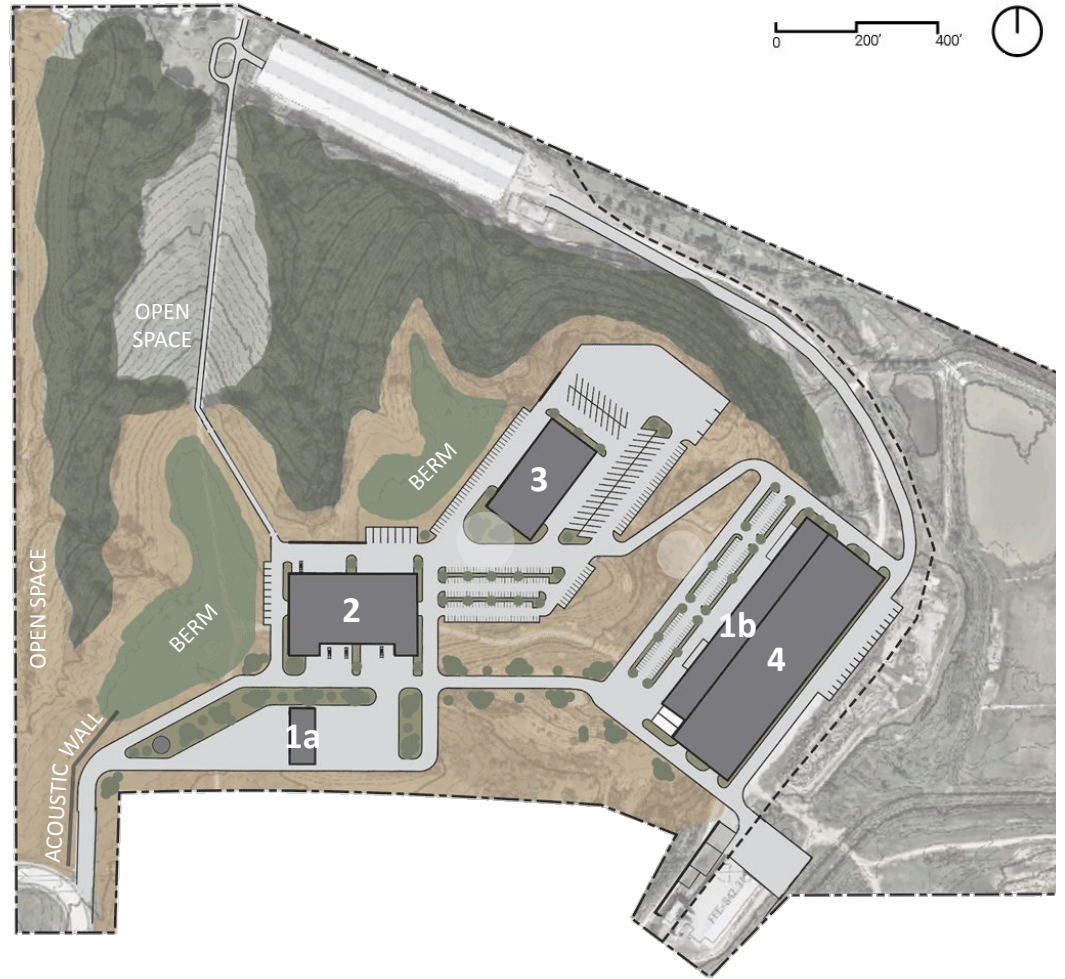
- 1a.** Fuel Island
- 1b.** MSO Building: Streets, Stormwater, Water, Wastewater, Traffic and Inspections Divisions
- 2.** Central Maintenance Garage
- 3.** Solid Waste Division
- 4.** MSO Conditioned Vehicle Storage



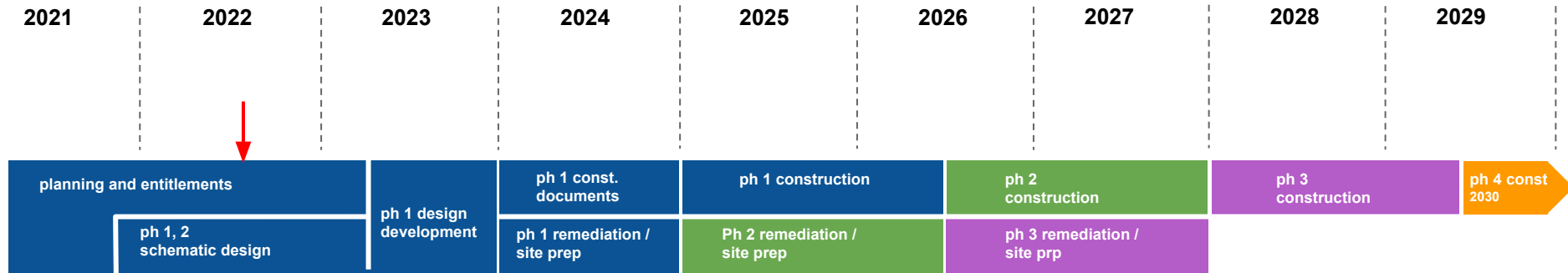
# Master Plan Farmland Site Option B

## Features and Considerations

- Less dense campus with 8 Divisions benefiting most from close proximity located on site.
- Distance from property line to MSO increased by over 1,000 ft.
- Large earth berm and sound wall added to west side of CMG to assist in noise reduction.
- Large earth berm added to west side of Solid Waste to assist in noise reduction.
- Open space preserved at former location of MSO.
- A separate strategy needed for Forestry, Horticulture and Facilities, Divisions, located off-campus.
- Some remediation would need to occur before Phase 1.



# Proposed Schedule



# Q AND A