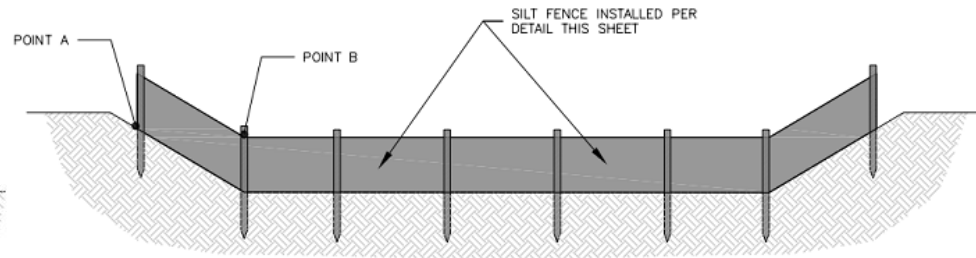


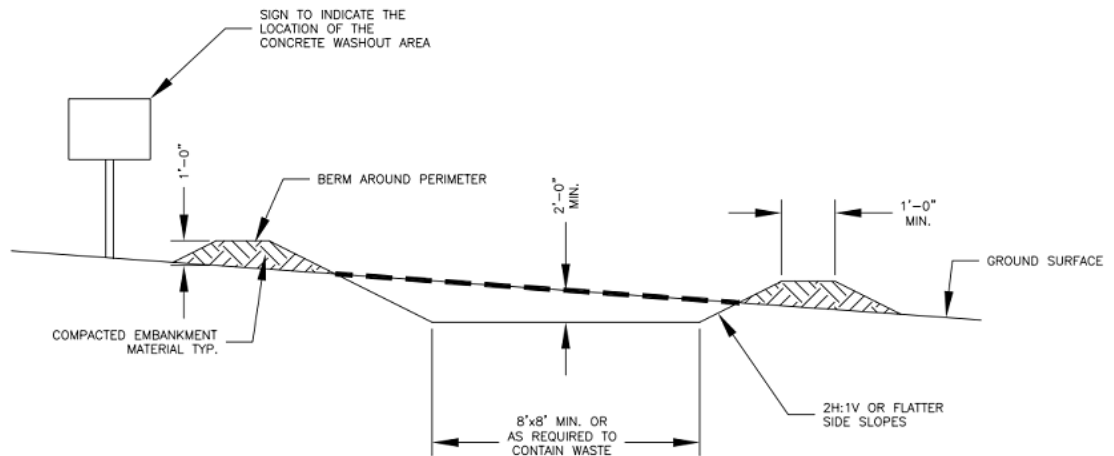
INSTALLATION OF BALE DITCH CHECKS



NOTE: POINT A MUST BE HIGHER THAN POINT B SO THAT WATER FLOWS OVER THE BALES AND NOT AROUND THEM.

INSTALLATION OF SILT FENCE DITCH CHECKS

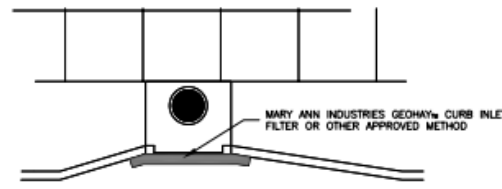
- ◆ Stockpiles of topsoil must be placed upstream of silt fencing.
- ◆ Uncontained waste that may blow, wash or otherwise be released from the site is prohibited. Site owner must provide and maintain on-site waste or recycling containers.
- ◆ Materials washout resulting from application of concrete, paint, etc. or cleaning of associated vehicles or equipment must be contained in designated areas for proper disposal.



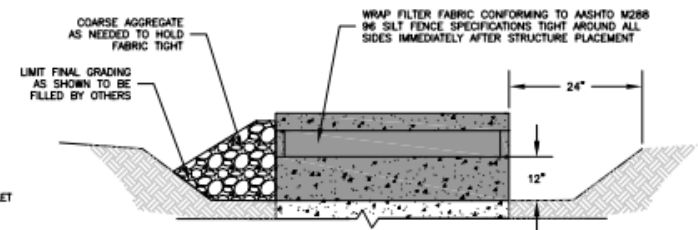
CONCRETE WASHOUT AREA

Site owners must inspect BMPs:

- at least once **every 14 days** and
- within **24 hours** after a rainfall event of 0.5" or more of rain



LONG-TERM CURB INLET SEDIMENT BARRIER



AREA INLET SEDIMENT BARRIER



For more information, visit Lawrenceks.org/mso/technical-resources/