

# 15 ITEMS

Can I recycle this? The 'yes' and 'no' of Lawrence's single-stream recycling.

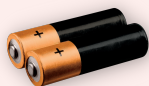
## 1 > Batteries



**NO.** Batteries pose a fire hazard to the recycling plant and are NOT ACCEPTED in your blue cart. This goes for all types of batteries, including phone, laptop, and rechargeable batteries.



Please contact **Household Hazardous Waste** to dispose of batteries properly.



## 4 > Shredded Paper



**NO.** Shredded paper is too small for the machines at the recycling facility. DO NOT place shredded paper in your blue cart.



Regular sized copy paper may still be recycled normally.

## 7 > Pizza Boxes



**YES.** If your pizza box is clean and doesn't contain a large amount of grease, it can be recycled in your blue cart.



If it's too greasy, just tear off the top for recycling and trash the bottom piece.

## 2 > Plastic Bags



**NO.** Plastic grocery bags, plastic produce and bread bags, and plastic films are NOT ACCEPTED in your blue cart. These items get caught in the machinery at the recycling facility.



These items are recyclable, and many local grocery stores take bags for recycling.

## 5 > Shampoo Bottle



**YES.** These recyclable items are often missed by even the keenest recyclers. When empty, rinse out the bottle and throw it in your blue cart.



\*\*Please remove any lids, as they are not larger than 2 inches.

## 8 > Plasticware & Paper Plates



**NO.** Contrary to popular belief, plastic silverware and paper plates are NOT RECYCLABLE. The odd shape and low quality of plastic makes it difficult to recycle.



Reduce waste by using durable, reusable plates and silverware instead.



## 3 > Paper Milk & Juice Cartons



**YES.** Recent advances in recycling now enable paper milk, juice, and soup cartons to be recycled.



Be sure to remove the lids on these items!

## 6 > Lids, Bottle Caps, and Plastics < 2 in.



**NO.** Loose plastic lids and bottle caps are NOT ACCEPTED.

Plastics smaller than 2 inches are too small for the sorting machines to identify and screen.



Plastic bottle caps are only accepted when still attached to plastic bottles that are being recycled.

## 9 > Styrofoam



**NO.** Styrofoam is the misfit of the recycling world since it's made from polystyrene.



Unlike other #6 plastics, Styrofoam is NOT ACCEPTED in your blue cart. It can break down into tiny pieces and contaminate other recyclables.



# 15 ITEMS

Can I recycle this? The 'yes' and 'no' of Lawrence's single-stream recycling.

## 10 ► Paper Coffee Cups ❌

**NO.** Paper cups are coated with a wax material to keep drinks insulated. In turn, the paper material is unrecoverable for recycling.



Keep reusable mugs and cups on hand for all your beverage needs.

## 11 ► Aluminum Foil ❌

**NO.** Despite having aluminum in the name, don't confuse aluminum foil with soda cans.

While aluminum foil is recyclable, it is not accepted in your blue cart due to its flat dimensions and nonconforming size.



## 12 ► Glass - Food & Beverage Containers ✔️

**YES.** Food and beverage containers made out of glass are accepted in your blue cart.



Remember that other types of glass are **NOT**

**ACCEPTED:**

window glass,  
pieces of  
glass, etc.



Only glass food and beverage containers are accepted.

## 13 ► 6 Pack Soda Rings ❌

**NO.** Plastic 6 pack rings are NOT ACCEPTED in your blue recycling carts.

Despite being made of plastic, 6 pack soda rings can easily get caught in machinery and around other loose items.



This is similar to how these rings can endanger fish and wildlife if they are not disposed of properly.

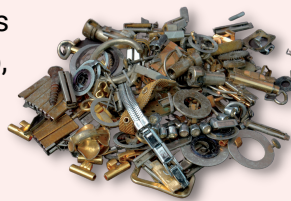


## 14 ► Scrap Metal ❌

**NO.** Scrap metal of any kind is NOT ACCEPTED in your blue bins.



Not only can these materials be hazardous and sharp, but the weight of these items can greatly skew the weight of recycled materials as they enter the processing facility.



Use the QR code below to find local organizations that accept scrap metals.



## 15 ► Plastic with symbols #3 - #7 with screw tops ✔️

**YES.** Plastic containers labeled #3 - #7 with screw tops are accepted in your blue cart.



Be sure to rinse out bottles and keep the lids on these items. Loose lids smaller than 2 inches are NOT ACCEPTED in your recycling cart.

