



L K P D

**SAFE
K:DS**
DOUGLAS
COUNTY

ANNUAL
REPORT
2022

LAWRENCE KANSAS POLICE DEPARTMENT

A MESSAGE FROM THE CHIEF...



***Rich Lockhart
Chief of Police
Lawrence, Kansas***

Since becoming your Police Chief in January of 2022, my daily focus has been to help you and your family feel safe and secure by reimagining policing in Lawrence. I know transparency in policing is critical and am proud to say it has been a top priority and directive since my arrival. The dedicated officers, detectives, investigators and law enforcement professionals under my watch know we serve the people and know I expect accountability and communication. It is my promise to you.

In 2022, we also focused on programs and partnerships within the community that make a difference. We increased our School Resource Officer Program and now cover all Lawrence Middle and High Schools. Our partnership with Lawrence Public Schools also led to implementing the “Handle with Care” program, to identify and offer assistance to children exposed to trauma. Safety at our schools, quite simply, is mandatory.

This report will show several other enhancements and advances in community-police relations, equity and inclusion, and in our ability to respond to mental health and other crisis situations.

This is your police department, and we value your feedback and encourage you to continue partnering with us in shaping the future of our department and community. It is important that we work together to determine the best way to police our community.

The Lawrence Kansas Police Department and I, personally, remain committed to upholding the highest standards of law enforcement. To that end, I also want to extend my deepest appreciation to our dedicated officers, support staff, and families for their unwavering commitment and selfless service.

I look forward to another year of collaboration and progress,

Rich Lockhart

2022 LKPD ORGANIZATIONAL CHART



Rich Lockhart
Chief of Police



Deputy Chief Adam Heffley



Deputy Chief Anthony Brixius



Major Trent McKinley
Investigations



Major William Cory
Information Services



Major Hayden Fowler
Patrol



Major Casey Cooper
Professional Standards



LT Amy Rhoads
Investigations



LT Myrone Grady
Exec. Officer of Diversity and
Community Engagement



LT Mark Unruh
Office of Professional
Accountability



LT Dave Ernst
Patrol Day Shift



LT Rob Murry
Patrol Swing Shifts



LT Ryan Halsted
Patrol Night Shift



LT Shannon Riggs
Training

SGT Mike Cobb

SGT Josh Guile

SGT Sam Hiatt

SGT Eric Barkley

SGT Gwyn Fogarty

SGT Justin Rhoads

SGT Steve Verbanic

SGT Bill Bradford

SGT Drew Fennelly

SGT Ron Ivener

SGT James Miller

SGT Ryan Robinson

SGT Meagan Shipley

SGT Bronson Star

SGT Dan Ashley

SGT Jamie Lawson

SGT Justin Trowbridge

LAWRENCE KANSAS POLICE DEPARTMENT

GUIDING PRICIPLES

The Lawrence Police Department's Guiding Principles surround our badge and are behind everything we do to protect and serve the residents of Lawrence, Kansas.

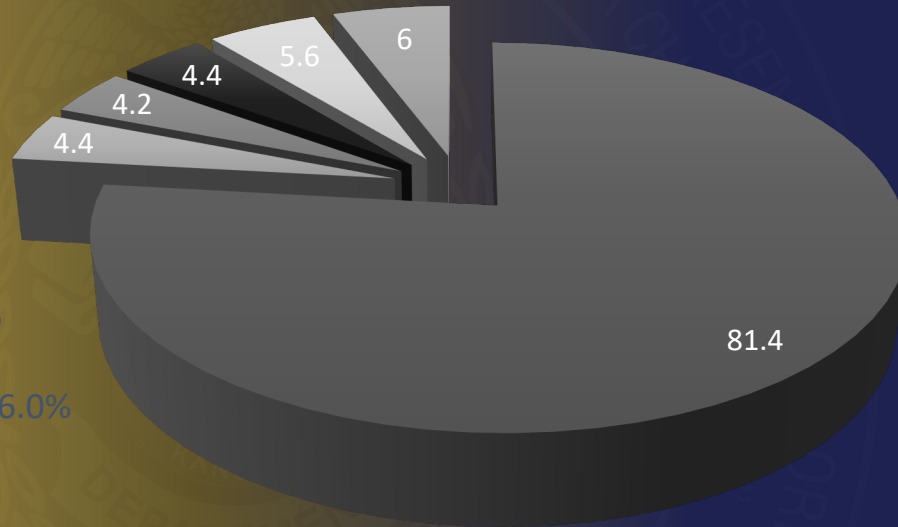


- **WE EXIST TO SERVE THE COMMUNITY**
- **WE BELIEVE IN THE PERSONAL TOUCH**
- **WE ARE FAIR BUT FIRM**
- **HOW WE GET THE JOB DONE IS AS IMPORTANT AS GETTING THE JOB DONE**
- **WE REPRESENT CIVILITY AND ORDER IN A CHANGING WORLD**

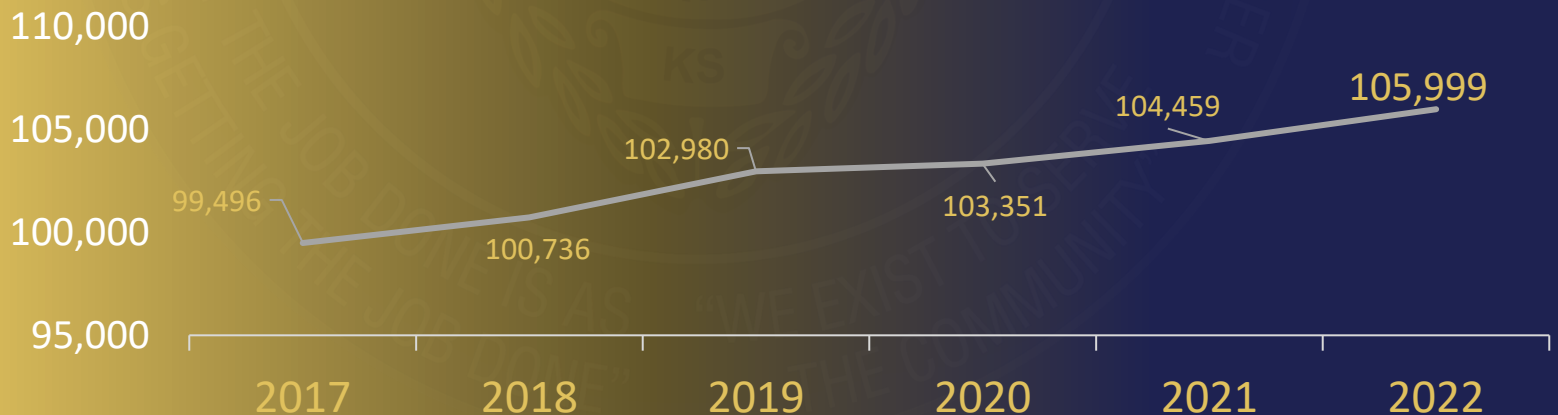
A LOOK AT THE CITY OF LAWRENCE

- White 81.4%
- African American 4.4%
- Asian 4.2%
- Other 4.4%
- Two or More Races 5.6%
- Claim Hispanic Ethnicity 6.0%

Demographics



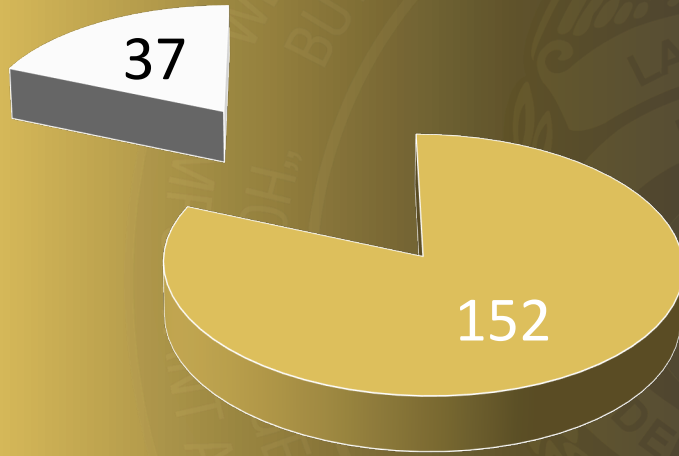
Population



POLICE DEPARTMENT STRENGTH

Authorized Strength

189



- Sworn Officers
- Non-Sworn Personnel

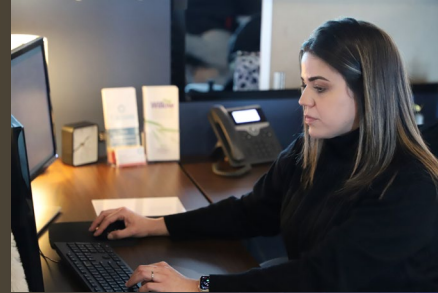
Current Sworn Personnel by Function

Patrol	86
Investigations	23
Command Staff *Lt Rank and above	14
School Resource Officers	6
K-9 Unit	3
Training & Academy	2
Property Room	1
Other	3

In 1997, a group of Police Chiefs from around the country established the Benchmark Cities Survey. The survey, updated annually, provides a range of information to assist participating agencies in setting goals and objectives, and comparing their performance in the various areas. [Click here to access all LKPD's Annual Reports and the Benchmark Cities Survey.](#)

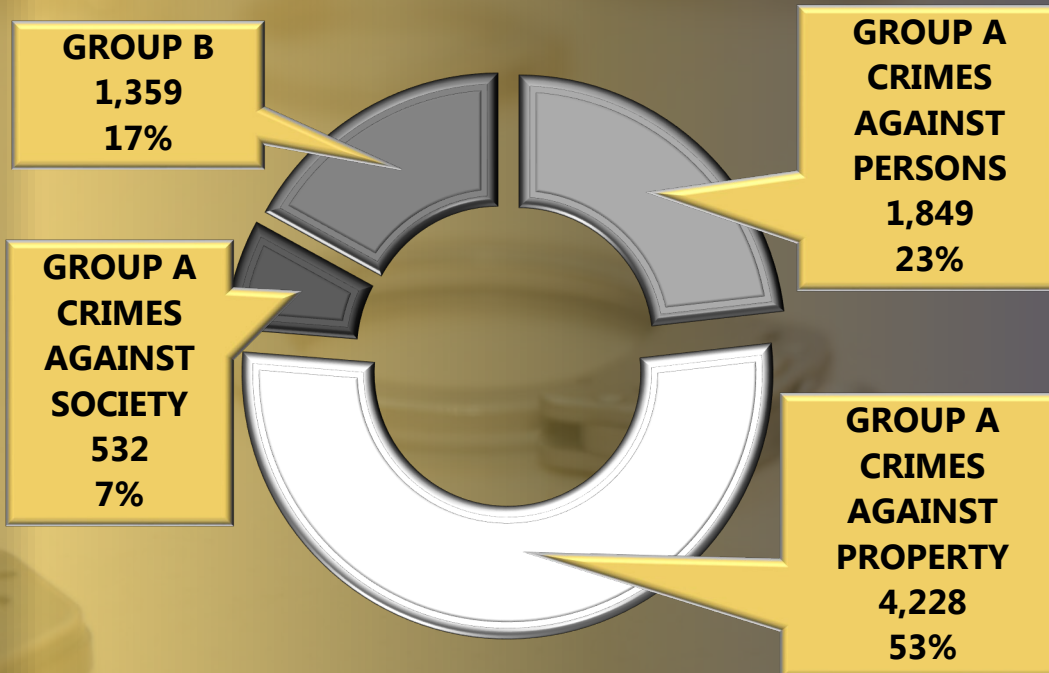
CIVILIAN STAFFING STRENGTH

The Lawrence Kansas Police Department isn't just made up of Law Enforcement Officers. Civilian employees make up about 20% our staff and as the policing industry evolves, that number continues to grow. Our LKPD family has professional experience outside of law enforcement to include the many categories listed here, bringing valuable skills to help us best serve and support the Lawrence community.



CITY OF LAWRENCE CRIME DATA

2022 CRIMES BY OFFENSE



Group A Offenses

Crimes Against Persons

- Homicide, Kidnapping, Assault/Battery, Rape, Fondling, Incest, Sodomy, Intimidation

Crimes Against Property

- Arson, Theft, Burglary, Bribery, Embezzlement, Forgery, Extortion, Criminal Damage, Robbery, Fraud

Crimes Against Society

- Drugs, Drug Paraphernalia, Obscene Material, Gambling, Weapons Violations, Prostitution

Group B Offenses

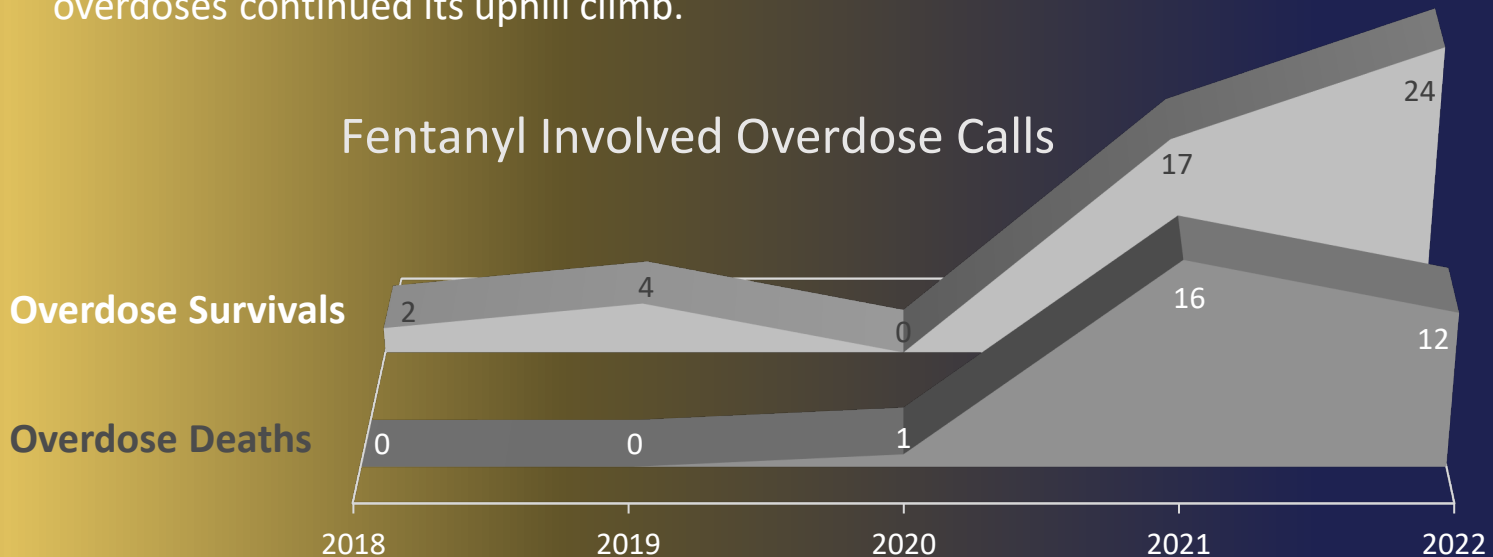
- Bad Checks, DUI, Drunkenness, Trespassing, Disorderly Conduct, Family Offenses, Liquor Violations, All Other

[Link: LexisNexis® Community Crime Map](#)

FENTANYL CRISIS TRENDS

Street fentanyl is a looming threat for our community. Law Enforcement Officers see preventable death and injury every day, but the increase and prevalence of fentanyl is relatively new, and the Lawrence community is not immune to this national crisis.

As recently as 2018 and 2019, LKPD records show zero fentanyl-related deaths. By 2021, a total of 33 overdose calls could be traced to fentanyl or a fentanyl/heroin mix with about half not surviving. Fentanyl is killing its users. With education and increased use of medical rescue efforts, our 2022 deaths dipped a little, while the number of survived overdoses continued its uphill climb.



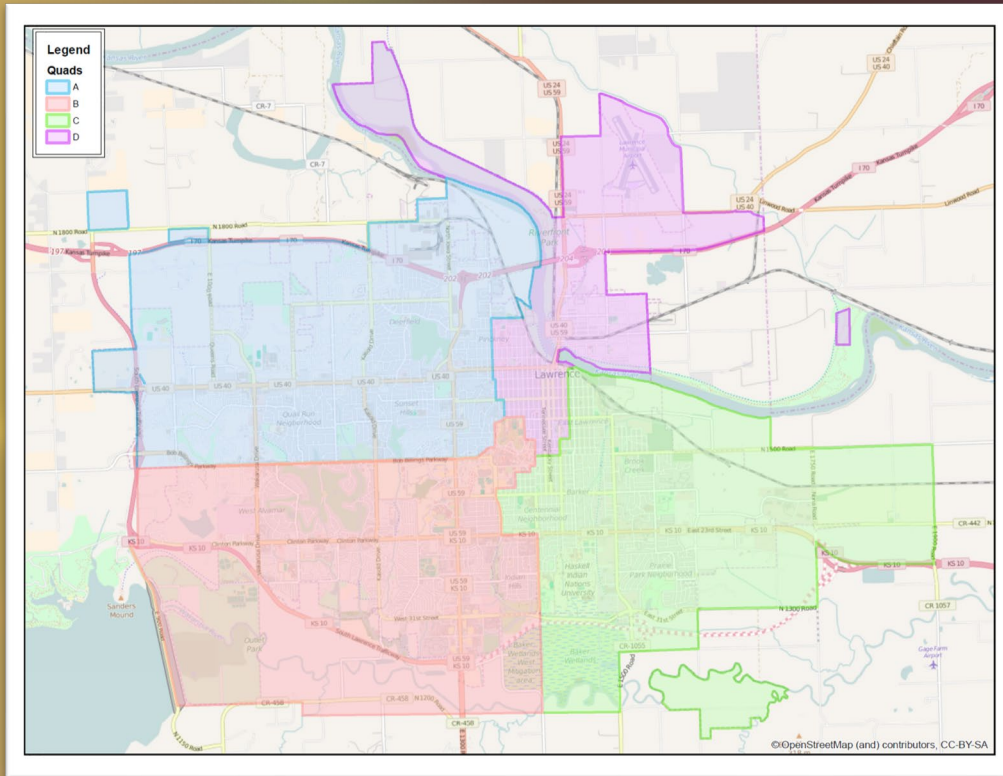
PATROL DIVISION

When the average member of the public sees a Lawrence Police Officer, chances are they are part of our Patrol Division. Its members are on the streets 24 hours a day, 7 days a week, and all holidays working to keep Lawrence safe and secure.

Lawrence officers are dispatched for service via Douglas County Emergency Communications Center. In 2022, about 60% of our officer's calls were initiated by citizens and about 40% were officer initiated while patrolling their assigned areas. The Patrol Division also includes our Accident Investigations Unit, which contains officers specially trained in recreating accident scenes to determine a cause.



LAWRENCE PATROL QUADRANTS



LKPD Commanders use “Quads” to assign officers specific areas in the city. Quads were created using historical calls for service data to balance deployed resources throughout the city and are re-evaluated when necessary.



LAWRENCE POLICE DEPARTMENT CALLS FOR SERVICE

Total Calls for Service has remained relatively consistent through the past few years, dipping slightly in 2022. When dispatched, calls are prioritized in categories 1-9 to most efficiently use available resources and enhance the safety of the public and department members. Priority 1 Calls are defined as: Those public safety calls that require the immediate presence of a law enforcement officer in order to protect individuals from injury of life-threatening situations or other emergency situations that require and depend upon an immediate response. Response time includes the minutes and seconds from the time the call is received by dispatch to the time the officer arrives on scene. We call that measurement, "Hello to Hello".

Priority 1 Call Median Response Times

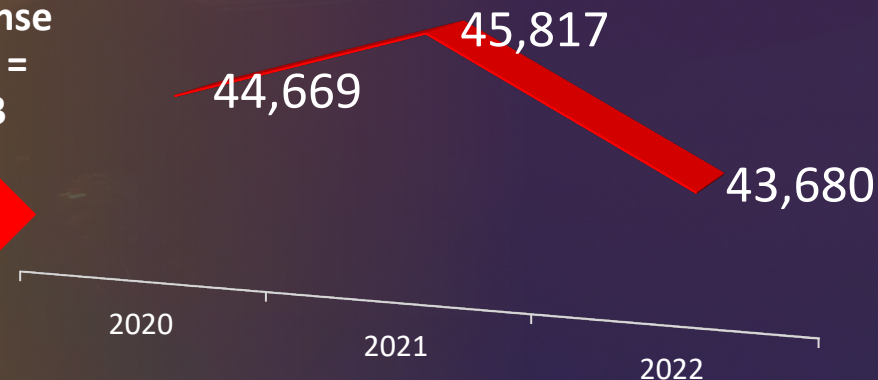
Call Receipt
to Dispatch
of Car = 26
seconds

Total
Response
Time =
4:23



Dispatch of Car
to Arrival on
Scene = 3:46

Citizen Initiated Calls for Service



LAWRENCE POLICE DEPARTMENT

TRAFFIC DATA

TOTAL CRASHES

- 2,089

Non-Injury

- 1,775

Injury

- 309

Fatality

- 4

TOTAL CITATIONS

- 4,658

Non-Moving

- 2,221

Some examples: parking violations, expired tags or insurance, vehicle maintenance issues.

Moving

- 2,437

Some examples: speeding, running a red light or stop sign, failure to yield, failure to use turn signals.

Top 3 Crash Causes

Inattention

Failure to Yield Right of Way

Following too Closely

Operating Under the Influence=213

Speeding = 711

Red Light Violations = 155

Other Moving Violations = 1,358

LAWRENCE POLICE DEPARTMENT SCHOOL RESOURCE OFFICERS

Our partnership with Lawrence Public Schools strengthens every year and 2022 was no exception. We now have officers, not only at the high schools, but also at each Lawrence Middle School. These officers establish relationships with the students and work to become a trusted adult, mentor and resource for all students. Check out our [Facebook](#) or [Twitter](#) accounts to see some of the excellent opportunities these folks provide Lawrence students, parents, and teachers.



LAWRENCE POLICE DEPARTMENT

PATROL SERVICE DOGS

Our Patrol Service Dogs play an important role within the Lawrence Kansas Police Department. In 2022, they were credited with **28 apprehensions and 25 drug finds**. K-9 Officers at LKPD are called Patrol Service Dogs for a reason. They're a part of the Patrol Division, along with their handlers. They're the first to enter many dangerous situations where their specific expertise, senses, and training best quickly and effectively resolve threats or community dangers. In 2022, we welcomed PSD Shadow to our team, while PSD Deuce took an early medical retirement.



C.B.



Mack



Shadow



LAWRENCE POLICE DEPARTMENT ***INVESTIGATIONS DIVISION***

Lawrence Investigators are trained and assigned to three specialized units:

Special Victims Unit:

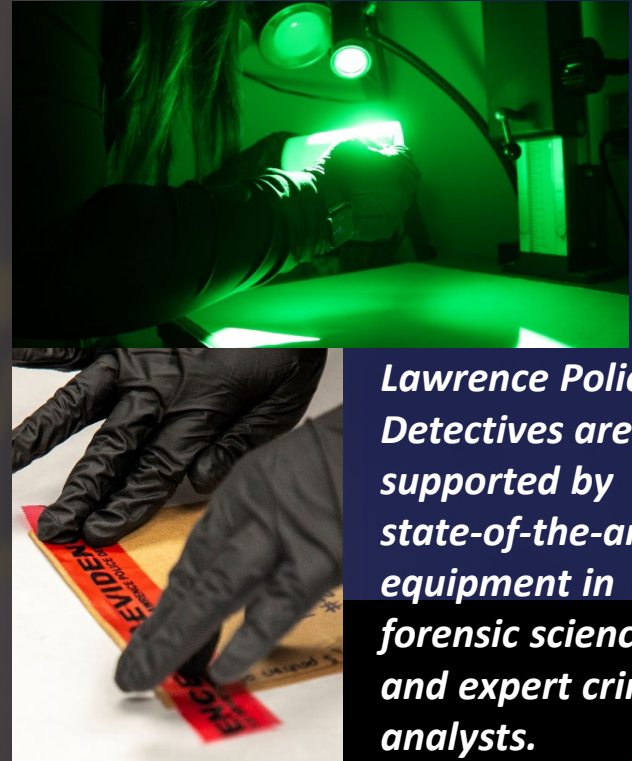
Investigates sexual and physical abuse cases including crimes against women, children, and dependent adults. The unit's detectives are supported by our victim's advocate and two civilian investigators.

Directed Investigations Unit:

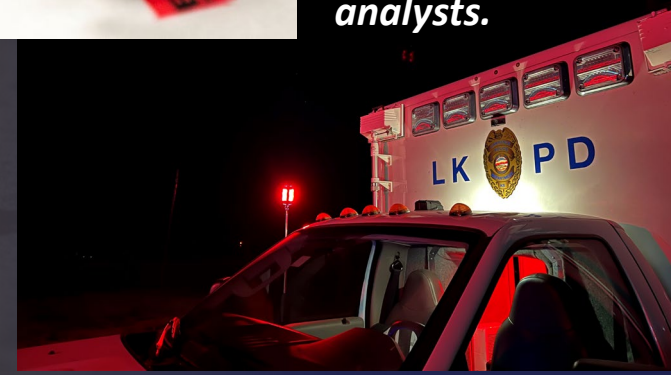
Specially trained in gang-associated crimes, major drug distribution, robberies, and related crimes.

General Investigations Unit:

Detectives who investigate crimes including murder, kidnapping, robbery, battery, assault, and financial crimes.



Lawrence Police Detectives are supported by state-of-the-art equipment in forensic science and expert crime analysts.



LKPD VICTIM SERVICES AND DOMESTIC VIOLENCE OUTREACH

Through our integration of Victim Services, we have been able to assist victims as they navigate the criminal justice system while ensuring their safety and access to resources. Approximately 1,400 victims of domestic violence have been served since early 2021. As part of a recent effort to improve domestic violence response, Lawrence Police Department added a domestic violence investigator. With the addition of a domestic violence investigator, working in tandem with a victim advocate and our community partners, we are adding to the organizational capacity to truly collaborate an effective response to domestic violence within our community.



LAWRENCE POLICE DEPARTMENT MENTAL HEALTH RESPONSE

Our Mental Health Co-Responder Program embeds a Qualified Mental Health Provider within the Lawrence Police Department. The goal is to provide the right intervention at the right time to prevent unnecessary arrests, decrease trips to the emergency rooms, and reduce repeat calls for service. The team responds, on scene, on behavioral health related calls to provide interventions once citizen safety has been determined. The co-responder may assist the client by transporting them to the crisis center or hospital, if appropriate. The co-responder will conduct outreach and follow-up calls to individuals who interfaced with law enforcement due to a behavioral health crisis, with the intention of getting the individual the help they need to avoid future police contact.



LAWRENCE POLICE DEPARTMENT CRISIS RESPONSE TEAM

Established in 1980, the Crisis Response Team (CRT) is an area partnership amongst first responder agencies.

The team responds to crisis situations throughout the region and includes specially trained officers, negotiators, tactical medics, and counter snipers.

CRT is comprised of expertly trained personnel from the Lawrence Kansas Police Department, Douglas County Sheriff's Office and Lawrence/Douglas County Fire and Medical.



Photos
courtesy of
The
Lawrence
Journal
World



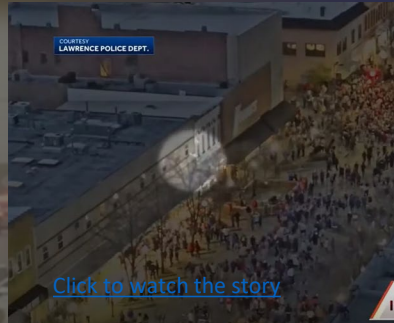
Hostage negotiation training, shown here and using local high school students as actors, is one of the valuable skills and safety measures the CRT brings to our community.



[Click here to watch KCTV story on CRT Hostage Training](#)

LAWRENCE POLICE DEPARTMENT UNOCCUPIED AERIAL VEHICLES

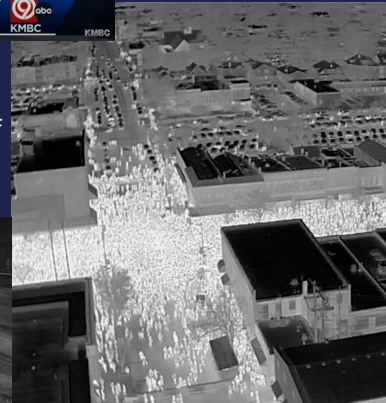
A drone from the Lawrence Police Department's Unoccupied Aerial Vehicle Unit made its first deployment in March of 2022 resulting in the arrest of a suspect attempting to flee from police through a wooded area and into a residential community. It was an exciting advancement allowing us to stop potential harm before it occurred. Since that day, the program's value has been repeatedly proven. From infrared views of a coal train derailment to wide views of crowds and tactical team maneuvers, UAV policing will continue to grow as a way to pinpoint needs and deter personal encounters and potential injuries.



[Click to watch the story](#)



KMBC highlights our UAV Program and legislative actions we believe are important to ensure success as the use of drones by law enforcement agencies increases.

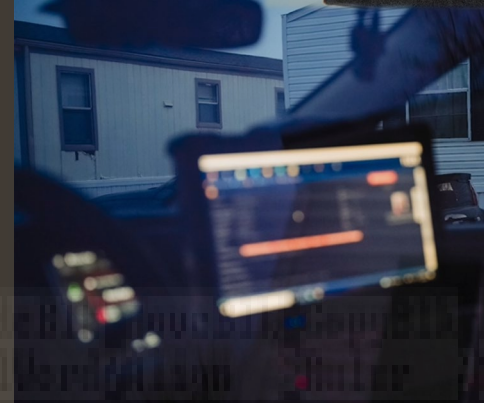


INFORMATION SERVICES UNIT

When most people think of the police department, they do not think about the vast amount of work done by our staff in Information Services.

This unit not only manages our secure network, but services the many devices needed to perform policing duties, including body cameras and in car computer and camera systems.

Information Services is also responsible for disseminating public information adherent to the Kansas Open Records Act.



*In 2022, LKPD
E-cycled 1,043
pounds of
electronics.*

LAWRENCE POLICE DEPARTMENT AWARDS

2022 brought the welcomed “post-Covid” return of our Annual Awards Ceremony where we thank officers and members of the community for their exemplary service. This year Chief Lockhart and KMBC-9 News anchor Kris Ketz presented awards of bravery, courage and commitment to deserving recipients.



LAWRENCE KANSAS



POLICE DEPARTMENT

Award Ceremony September 27, 2022

Program

- Social Hour
6:00pm
- Welcome
- Presentation of Colors
- Invocation
- Dinner
6:25pm
- Awards Ceremony
7:15 pm

Award Recipients

Life Saving / Citizen Lifesaving

- PO II Laurence Corder
- Scott Sloyer
- Tyler Sloyer
- Dr. Michael Rack

Citizen Lifesaving

- Ina Ward
- Jean Irvin

Citizen Distinguished Service

- Chris Goulet
- Jeffery Colter
- Daniel Boone-Salazar
- Derrick Johnson
- Demetrius Kemp
- Spencer Bonner

Commendation

- Ofc. David McShane
- Ofc. Austin Corbitt
- Ofc. Austin Twite

Unit Commendation

- Sgt. Ryan Robinson
- Sgt. Janice Lawson
- Ofc. Zachary Isaac
- Ofc. Andrew Haar
- Ofc. Taylor Larson
- Ofc. Steven Duckworth
- Ofc. Charles Smyser
- Ofc. Levi Flohrschatz
- Ofc. Austin Twite
- Ofc. Jonathan True
- Ofc. Anthony Harvey, Jr.
- Ofc. Jeremiah Rinner
- Ofc. Parker Finch
- Ofc. Alexander Sullivan
- Ofc. Juan Villarreal-Sanchez

Purple Heart

- Ofc. Skyler Richardson

Medal of Valor

- Ofc. Alexander Brittain
- Ofc. Stephen Ramsdell
- PO II Kevin Henderson
- Ofc. Justin Snipes

LAWRENCE POLICE DEPARTMENT AWARDS

Thank you to the Award Recipients for going above and beyond for our community, to the Commanders and Officers for all they do for Lawrence, and to our families and guests for the support they provide to Lawrence Kansas Police Department.

You are appreciated.



**KMBC
NEWS 9 abc**



LAWRENCE POLICE DEPARTMENT CITIZEN AWARDS

Members of our Community who went above and beyond, were also recognized during the 2022 Lawrence Kansas Police Department Awards Ceremony.

Citizen Lifesaving

Scott Sloyer
Tyler Sloyer
Dr. Michael Rack
Ian Ward
Jean Irvin



Citizen Distinguished Service

Chris Goulter
Jeffery Colter
Daniel Boone-Salazar
Derrick Johnson
Demetrius Kemp
Spencer Bonner



2022 PROMOTIONS



A pinning ceremony is a long-standing law enforcement tradition. There are two times a badge is presented; first upon graduating from the academy and second upon being promoted. Both times are significant career accomplishments. Congratulations to all who received promotions in 2022.



2022 PROMOTIONS



LAWRENCE POLICE AND THE CHAMPIONSHIP JAYHAWKS!

Sometimes, policing is more fun than others and our hard work to ensure a safe and secure Jayhawk Basketball Championship Celebration in 2022 started well in advance of the final score.

Each year, planning begins at the start of the year. In 2022, it ended with the help of 16 support agencies and nearly 350 officers on the ground to keep everyone safe. The celebrations were without any critical incidents but included many officer “high-fives”.



LAWRENCE POLICE DEPARTMENT

BLUE SANTA

The Lawrence Police Blue Santa Program was founded in 2011 by the men and women of the Lawrence Police Department. It's an officer-based referral program that assists the community in a time of need. Simply put, when an officer responds to a call or comes across a family with an emergent need such as winter coats, shoes, supply of food or getting children their own bed to sleep in, the officer will reach out to Blue Santa for assistance and our program will help out. Our Blue Santa volunteers also work to support organizations like Habitat for Humanity.



Blue Santas were especially proud to be able to help a family who lost everything in a devastating house fire in 2022.

LKPD COMMUNITY SERVICE

Lawrence officers volunteer their time to keep the nationally recognized “Safe Kids” program here in Douglas County. The coalition is committed to helping prevent unintentional childhood injury and death. We work with parents, teachers, health care providers, organizational leaders, and elected officials to keep children safe and provide free safety services and equipment.



We also proudly participate in the “Safe Winter Walkways Program” through the Senior Resource Center of Douglas County. Shoveling sidewalks for our local seniors and disabled community members puts just as big a smile on our faces as it does those we help out.



LAWRENCE POLICE COMPLAINT AND COMPLIMENT PROCESS

The Lawrence Police Department is committed to providing professional police service to the citizens of Lawrence. Department members are required to observe high standards of moral and ethical conduct at all times. Complaints regarding the alleged violation of laws, policies and procedures are investigated by the **Office of Professional Accountability (OPA)** or the employee's direct supervisor. Each alleged violation is investigated and documented using IA Pro case files.

In 2022, of our agency's 73,805 interactions with Lawrence citizens, we received a total of 22 citizen-initiated complaints, resulting in 3 officers receiving sustained outcomes. The sustained complaints total 5 policy violations to include two related to a non-injury accident report, one body worn camera initiation violation, a turn signal violation, and a tobacco use violation. To view a summary of all reported complaints, [click this link to access all 2022 department reports.](#)

We've made submitting a complaint or compliment to the Lawrence Police Department easy.

Use any of these avenues:

•**US Mail.** Complete and mail [this form](#) and send to:

•Office of Professional Accountability
4820 Bob Billings Parkway
Lawrence, KS, 66049

•**Phone** at 785-832-7551

•**Email** opa@lkpd.org

•**In Person:**

•Police Headquarters
5100 Overland Drive
Lawrence, KS 66049

LAWRENCE POLICE COMPLAINT AND COMPLIMENT PROCESS

Complaint Filed with Department

Informal Process:

Any supervisor that can appropriately address the complaint can handle the inquiry.

If the complaint appears minor and non-repetitive or habitual, it will normally be forwarded to employee's Major who will conduct an informal investigation and make the appropriate disposition.

Complaint forwarded to the Office of Professional Accountability (OPA)

Anyone can file a complaint with the **OPA** including the subject of the incident, a bystander, a legal representative or an anonymous person.

The Lawrence Kansas Police Department will accept all complaints against the department or any of its employees, regardless of the subject or how it is received. Anonymous complaints will not be dismissed.

Office of Professional Accountability Investigation

The **OPA** investigator will interview witnesses, collect documents and prepare a report summarizing the investigation.

At the conclusion of the investigation, all affected parties are notified in writing of the outcome.

OPA is responsible for formal investigations alleging a breach of policy, procedures, rules or regulations, and other non-criminal complaints.

OPA will investigate all allegations pertaining to the Use of Force, Pursuit policies, or biased-based policing.

Racial or bias-based Complaint

Any complaint related to racial or other bias-based policing submitted to either the Police Department or the Board, if the complainant is unsatisfied with the Police Department's findings, the complainant may appeal the findings to the Board, in writing, within 14 days of receipt of notification of the department's findings for review by the Board.

[Click here for more information on the Community Police Review Board](#)



LKPD

OFFICE OF PROFESSIONAL ACCOUNTABILITY REPORTS



TOTAL SERVICE CALLS: 73,805

TOTAL ARRESTS: 1,736

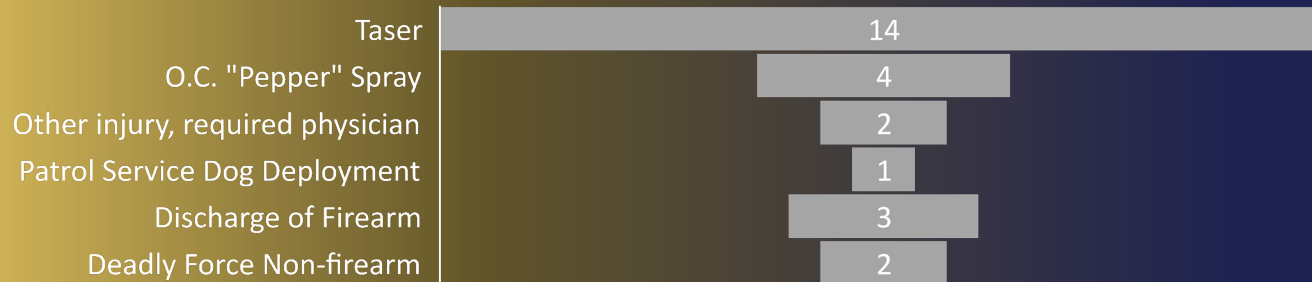
TOTAL USE OF FORCE ENCOUNTERS: 15

REPORTABLE USES OF FORCE: 26

PERCENTAGE OF CALLS RESULTING IN USE OF FORCE: .00002% (ENCOUNTERS/TOTAL CALLS)

PERCENTAGE OF ARRESTS RESULTING IN USE OF FORCE: .0086% (ENCOUNTERS/ARRESTS)

FORCE BY TYPE



In 2022, the Lawrence Police Department logged 73,805 calls, which includes officer-initiated activity and citizens' request for police services. Fifteen encounters resulted in 26 separate use of force reports. The Use of Force Review Board reviewed all reports and found in each case, officers' responses to resistance were reasonable and within department policy. **Each incident reviewed was triggered by internal safeguards dictated by department policy.**

DEMOGRAPHICS



LAWRENCE STRATEGIC PLAN ***SAFE AND SECURE***

Lawrence Strategic Plan “Safe and Secure”

In July 2021, the City of Lawrence published an overview of the Lawrence Strategic plan based on your feedback. In 2022, we continued to work toward increasing the areas of focus identified in the plan to assure our community is one where all people feel safe and secure and have access to trusted public safety services and community-based law enforcement resources.

Mission:

We create a community where all enjoy life and feel safe at home

Vision:

The City of Lawrence – supporting an unmistakably vibrant community with innovative, equitable, transparent and responsible local government.

Organizational Values:

Character, Competence, Courage, Collaboration, Commitment

To learn more: [City of Lawrence Strategic Plan](https://lawrenceks.org/strategic-plan/) [Safe and Secure Key Performance Indicators](https://stories.opengov.com/lawrenceks/published/kVEh3VK0A)

<https://lawrenceks.org/strategic-plan/>

<https://stories.opengov.com/lawrenceks/published/kVEh3VK0A>

LAWRENCE STRATEGIC PLAN

SAFE AND SECURE

Lawrence Police Department Continues to Enhance Strategies Used to Help Residents Feel Safe and Secure

Community Engagement

The Department vows to continue using community empowerment and education to eliminate, reduce and respond to events, trends and activities that pose the greatest threat to safety and security. We will continue to use the following strategies:

- Enhance partnerships and community programs to protect and encourage healthy lifestyles including physical, behavioral and mental health.
- Enhance our partnerships with community organizations and governmental agencies to 1) reduce instances of sexual and domestic violence incidents and 2) respond to and assist victims through their recovery.

Efficient and Effective Processes

- Provide rapid, skilled and appropriate response to Part 1 offenses, domestic violence and other serious, time-critical incidents.

Equity and Inclusion

- Enhance collaboration with existing community organizations, governmental agencies, healthcare providers and schools with a focus on increasing awareness of and access to resources that will impact trends and reduce repeated incidents.
- Train and equip personnel to effectively respond to and support the investigation of incidents involving a child in need of care (CINC) or other incidents falling under the jurisdiction of the Kansas Department for Children and Families.

Sound Fiscal Stewardship

- Develop a strong, reliable and integrated system of volunteer and community resources.
- Reduce redundancy with other safety agencies, City departments and community resources.
- Maximize use of civilian capabilities to make deployment of specialized and highly technical personnel more efficient.

Engaged and Empowered Teams

- Train and equip personnel to skillfully support mental, behavioral, and physical well-being of community members; specifically focusing on improved outcomes resulting from Part 1 offenses and sexual and domestic violence.

Environmental Sustainability

- Evaluate public safety processes for opportunities to enhance environmental management practices.

LAWRENCE POLICE DEPARTMENT 2022 NEWSWORTHY NOTES

THE KANSAS CITY STAR.
Part of the McClatchy Media Network

Video shows high speed police chase of double homicide suspect through Lawrence

BY ROBERT A. CRONKLETON
UPDATED AUGUST 23, 2022 12:14 PM



FULL VIDEO: Police release video of pursuit, arrest of Lawrence man accused in double homicide

LKPD made national headlines after the safe arrest of a double homicide suspect who shot at police during a lengthy pursuit.

By KCTV5 Staff
Published: Aug. 22, 2022 at 11:00 AM CDT

LAWRENCE, Kan. (KCTV) - The Lawrence Police Department has released dash and body camera video following a police pursuit, shots being fired, and the arrest of a man accused in two homicides. It also appears some of the video was shot by a drone. Following a press conference, the police provided the entire video file. It is of fairly high quality and is 14 minutes and 24 seconds long. You can watch that below:



LAWRENCE POLICE DEPARTMENT 2022 NEWSWORTHY NOTES

LJWORLD.COM®
LAWRENCE JOURNAL-WORLD

☰
MENU

KMBC
NEWS 9 abc

Chief Rich Lockhart's decision to ban of no-knock warrants and chokeholds within months of taking office, made news headlines throughout the state and in Kansas City.

New Lawrence police chief bans no-knock warrants, use of chokeholds after receiving community feedback

PUBLIC SAFETY

MAR 26, 2022 - 11:21AM

CHAD LAWHORN
Editor
clawhorn@ljworld.com

f SHARE

TWEET



13 WIBW

☰ News Weather Sports Latest Video Livestream Send It In

Lawrence Police Chief bans no-knock warrants, chokeholds

FOX 4

Mornings ▾

Great Day KC

LAWRENCE POLICE DEPARTMENT 2022 NEWSWORTHY NOTES

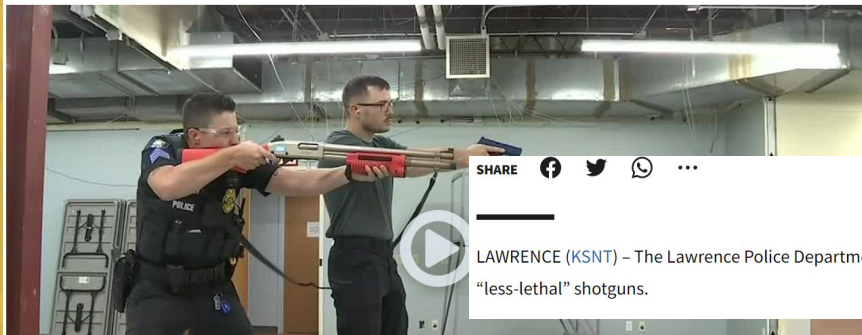
LJWORLD.COM®
LAWRENCE JOURNAL-WORLD

In our continued effort to ensure Lawrence remains a safe place to live, while limiting harm, the department began the use of less-lethal shotguns in July of 2022.

The Lawrence Police Department has made a full transition from traditional patrol shotguns to a less lethal “beanbag” option, the department announced this week.

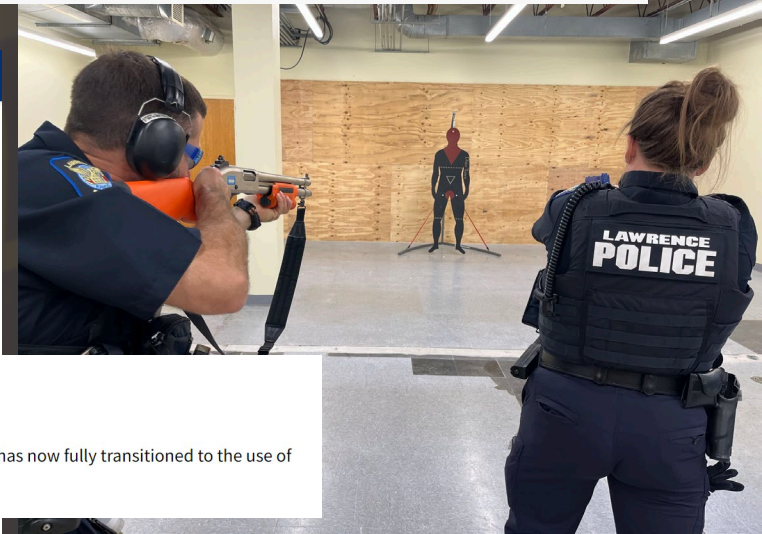
KCTV 5 News Kansas City Chiefs Weather Sports KCTV5 Investigates Meet the Team Submit Photo What's On

Lawrence Police Department switches to bean bag shotguns



SHARE    

LAWRENCE (KSNT) - The Lawrence Police Department has now fully transitioned to the use of “less-lethal” shotguns.



LAWRENCE POLICE DEPARTMENT 2022 NEWSWORTHY NOTES

☰ CNN US Crime + Justice Energy + Environment Extreme Weather Space + Science

A suspect in the shooting deaths of 4 people in Ohio was captured in Kansas

By Tina Burnside, Kiely Westhoff and Amya Henry, CNN
Updated 10:19 PM EDT, Sun August 7, 2022

SHARE    ...

This is an archived article and the information in the article may be outdated. Please look at the time stamp on the story to see when it was last updated.

LAWRENCE, Kan. — Lawrence police arrested a man suspected of killing four people near Dayton, Ohio, Saturday night.

Officers say the arrest happened after a city-wide search when an officer noticed a vehicle matching the suspect's description in the area of West 23rd Street and Ousdahl Road.

Stephen Marlow, 39, was taken custody without incident.

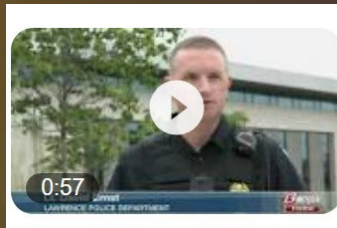
THE KANSAS CITY STAR
Part of the McClatchy Media Network
Man arrested in Lawrence after allegedly killing four people in Ohio and fleeing

NEWS

Suspect in Ohio quadruple homicide arrested in Lawrence

by: Mike Coutee
Posted: Aug 7, 2022 / 10:24 AM CDT
Updated: Aug 7, 2022 / 01:41 PM CDT

LKPD is grateful to have brought a small level of peace to the citizens of Butler-Township Ohio and the nation.



Lawrence Patrol Lieutenant David Ernst answered questions about Saturday's arrest of Ohio murder suspect Stephen...
WIBW · Aug 8, 2022

LAWRENCE POLICE DEPARTMENT

2022 NEWSWORTHY NOTES

NEWS

Lawrence Police Department training to help kids experiencing trauma

by: Heidi Schmidt
Posted: Sep 20, 2022 / 11:40 AM CDT
Updated: Sep 20, 2022 / 11:47 AM CDT



Lawrence Public Schools



SHARE    

LAWRENCE, Kan. — Police in one of the largest cities in Kansas are taking a new approach in hopes of helping some of the youngest in the state.

Lawrence Police Officers are being trained this week on the best way to handle children who are exposed to trauma.

The training is called “Handle with Care,” and involves school resource officers, Lawrence Public Schools, and the Douglas County advocacy group, DCCCA.



For Immediate Release: September 20, 2022

LKPD Begins “Handle with Care” Training to Identify Children Exposed to Trauma

Lawrence, KS – Too often, children in our community witness trauma. Lawrence Police officers see it on a regular basis but, for various reasons including privacy concerns, help is never offered. A commonsense solution is underway in Lawrence to change that.

This week, School Resource Officers are training their patrol colleagues in a program involving LKPD, Lawrence Public Schools, and our county advocacy group, DCCCA. “Handle with Care” helps ensure child well-being is a top priority.

“Handle with Care” provides the school with notification when officers encounter a child at the scene of a traumatic event. The traumatic event could range from a motor vehicle accident to witnessing a violent crime. Police are being trained now to identify children at the scene, find out where they go to school, and send the student’s school a confidential communication which simply says, “Handle with Care” along with the child’s name and grade.

Our mission to protect Lawrence’s most vulnerable neighbors will always remain a top priority, which is the goal behind “Handle with Care”.

LKPD SOCIAL MEDIA

If you're not following one of our social media accounts, you're missing out. It's a great way to stay informed about community events, neighborhood alerts and important notices. Plus, we have a lot of fun!



A screenshot of the Lawrence Police Twitter profile. At the top left is the Lawrence Police Department badge. To its right is an "Edit profile" button. The profile name is "Lawrence Police" with a verified checkmark, and the handle is "@LawrenceKS_PD". Below this is a bio: "This is the official Twitter account of the Lawrence, KS PD, and is not monitored 24/7. For emergencies please call 911. [lawrenceks.org/social-media](https://www.lawrenceks.org/social-media)". Location is "Lawrence, KS" and website is "[lawrenceks.org/police](https://www.lawrenceks.org/police)". It shows "Joined December 2015", "238 Following", and "164.7K Followers". At the bottom are tabs for "Tweets", "Tweets & replies", "Media", and "Likes".

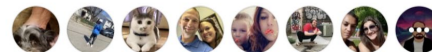
Our [Facebook page](#) (Lawrence Kansas Police Department) grew substantially in 2022 and now nearly 40,000 people have chosen to follow our page. [Twitter](#) (@LawrenceKS_PD) followers number more than 160,000!

Use our social media pages to get information directly from our department, interact with your neighbors, and get to know some of the fine men and women dedicated to serve and protect our community.



Lawrence Kansas Police Department

39K followers · 71 following





LAWRENCE KANSAS POLICE DEPARTMENT

5100 Overland Drive
Lawrence, KS 66049

Emergency: 911

Non-emergency (785) 832-7509

Crime Stoppers: (785) 843-TIPS (8477)