

**BRICK STREETS + SIDEWALKS
POLICY SUBCOMMITTEE
MEETING #2.5**

Purpose

Continue conversation from Meeting #2.

Determine:

- Policy direction for **brick sidewalk** protection/ preservation
- Policy direction for **brick street** protection/ preservation

Staff will use subcommittee policy direction as a framework for drafting the first draft of brick streets and sidewalk policy.

Additional details and specifications to come in later conversations. This is a starting place.

The Brick Streets + Sidewalks policy should reflect the community's values and priorities, as well as have attainable and practical implementation strategies for the City of Lawrence.

Sidewalk:

- Utilize Sidewalk Improvement Program and the ADA Transition Plan to determine conditions of existing sidewalks.
- Implement ADA / Public Right Of Way Accessibility Guidelines standards and recommendations.
- Develop specifications for new / redeveloped brick sidewalks.
- Consider state statute dictates maintenance of sidewalks be the responsibility of property owner.

Street:

- Develop design standards + specifications for new / redeveloped brick streets.
- Identify locations for brick street protection.
- Implement the Asset Management Program for brick street reconstruction.
- Consider limited funding for street projects.

Existing Code

City Code; Chapter 16:

CONFORMITY TO SPECIFICATIONS.

All sidewalks constructed in this City **shall be constructed of Portland cement concrete** or material approved by the City Commission in strict accordance with the specifications adopted by the commission and on file in the City Engineer's office **except if a brick sidewalk exists and the owner chooses, the walk may be reconstructed or repaired with brick.** No person shall construct any sidewalk in this City unless such sidewalk shall conform to the specifications therefor and according to the provisions of this Article and/or the provisions of K.S.A. 12-6a04 et seq. (Ord. 5479)

State Statute 12-1808: It shall be the duty of the owner of the abutting property to keep the sidewalk in repair ...

COMMUNITY FEEDBACK

A survey was available April 4 – April 19

176 responses were received

The survey asked respondents to rank a set of ten values from 1-10 to help [us] understand how they prioritize conflicting values. Results are as follows:

Priorities for Brick Sidewalks

1. **Safety**
2. **Accessibility**
3. **Sustainability**
4. Tradition
5. Charm
6. Uniqueness
7. Cost
8. Community
9. Equity
10. Efficiency

Priorities for Brick Streets

1. **Safety**
2. **Sustainability**
3. **Tradition**
4. Charm
5. Cost
6. Uniqueness
7. Accessibility
8. Community
9. Efficiency
10. Equity

POLICY DIRECTION

*Be sure to consider public feedback

POLICY DIRECTION (BRIEF OVERVIEW)

Sidewalks

Option 1: Standard material is concrete, historic areas encouraged to enhance concrete with brick details outside of public walkway.

Option 2: Brick sidewalks permitted only in historic districts, concrete elsewhere.

Option 3: Brick sidewalks permitted only in historic districts + areas indicated on map

Streets

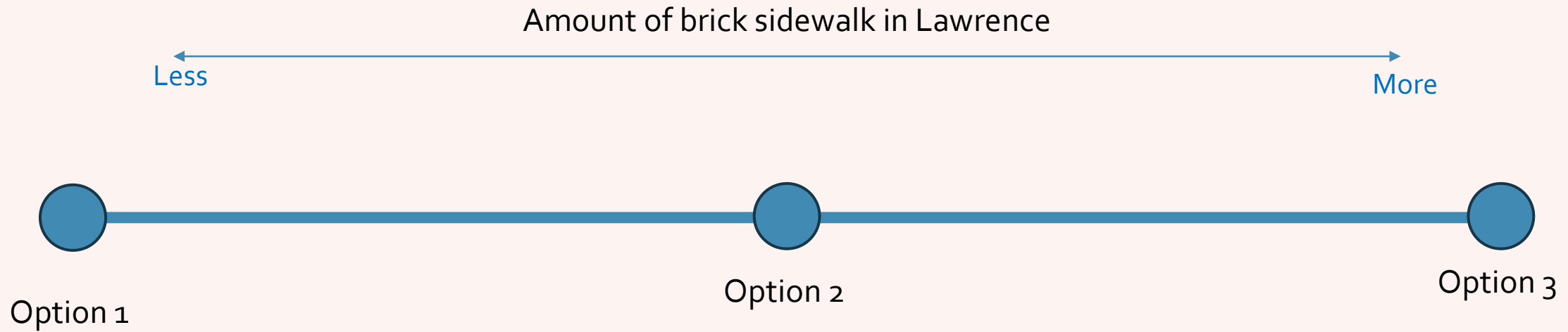
Option 1: Brick streets protected in historic districts.

Option 2: Brick streets protected in historic districts + areas indicated on map

Option 3: All existing brick streets to remain brick.

Existing brick sidewalks which meet ADA safety standards are **left alone in all options. If a sidewalk is not meeting code, BS+S Policy would be applied.

POLICY DIRECTION - SIDEWALK



All options are built on the value priorities of **Safety, Accessibility, and Sustainability** identified by the community and include practical implementation strategies for the City of Lawrence.

PHOTO EXAMPLES



PHOTO EXAMPLES – BRICKS OUTSIDE OF PUBLIC PEDESTRIAN WALKWAY



POLICY DIRECTION - SIDEWALK

Option 1 of 3

Sidewalk standard material is concrete, brick accents encouraged in historic districts

When brick sidewalk is determined to not meet accessibility standards (PROWAG), policy would require property owners replace sidewalk with **concrete**.

- New development would use concrete for sidewalks.
- Improved consistency along paths.
- Encourages preventative maintenance of existing brick sidewalks.
- Bricks can still be used outside of the public walkway.



POLICY DIRECTION - SIDEWALK

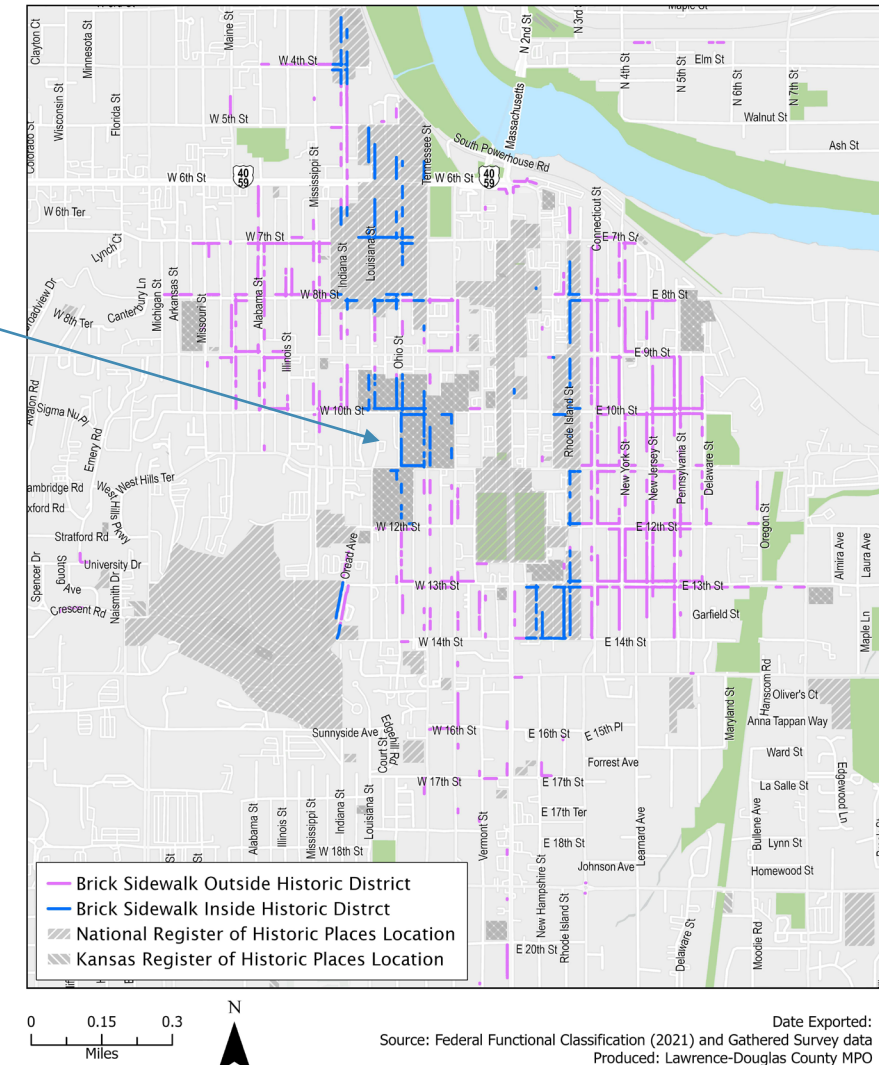
Option 2 of 3

Brick sidewalks permitted in local/ state/ national historic districts only. (BLUE)

When a brick sidewalk in a **historic district** is determined to not meet accessibility standards (PROWAG)... Property owner makes determination of whether to replace sidewalk with:

- concrete or
- enhanced brick sidewalk specifications (specs TBD by policy)
- This would allow a property, in a historic district, which currently has concrete as their sidewalk material to chose to replace this material with enhanced brick sidewalk.
- Concrete sidewalks in historic districts *could* have special design standards, e.g. border the walkway with bricks.
- If the property is not in a historic district, they'd be required to replace with concrete.

Note: Enhanced brick sidewalk specifications will likely have increased cost due to 5' width, enhanced base, and additional safety requirements. Additional analysis needed to determine who pays the cost and/or how the cost is split amongst parties.



DISCLAIMER NOTICE
The map is provided "as is" without warranty or any representation of accuracy, timeliness or completeness. The burden for determining accuracy, completeness, timeliness, merchantability and fitness for or the appropriateness for use rests solely on the requester. The City of Lawrence makes no warranties, express or implied, as to the use of the map. There are no implied warranties of merchantability or fitness for a particular purpose. The requester acknowledges and accepts the limitations of the map, including the fact that the map is dynamic and is in a constant state of maintenance, correction and update.

POLICY DIRECTION - SIDEWALK

Option 3 of 3

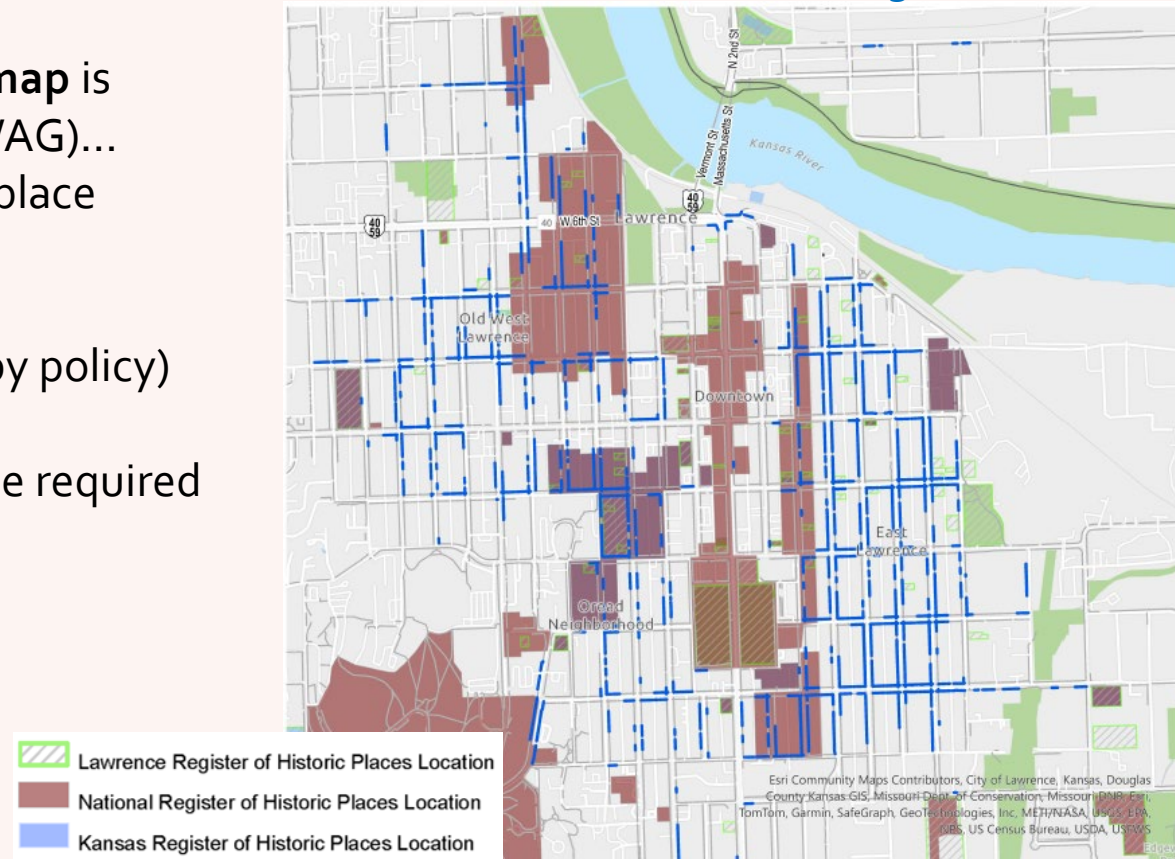
Brick sidewalks in historic districts + areas identified as permissive on policy map.
Map would be determined with assistance from Committee, HRC, MMTC and staff.

When a brick sidewalk in an **area identified by policy map** is determined to not meet accessibility standards (PROWAG)...
Property owner makes determination of whether to replace sidewalk with:

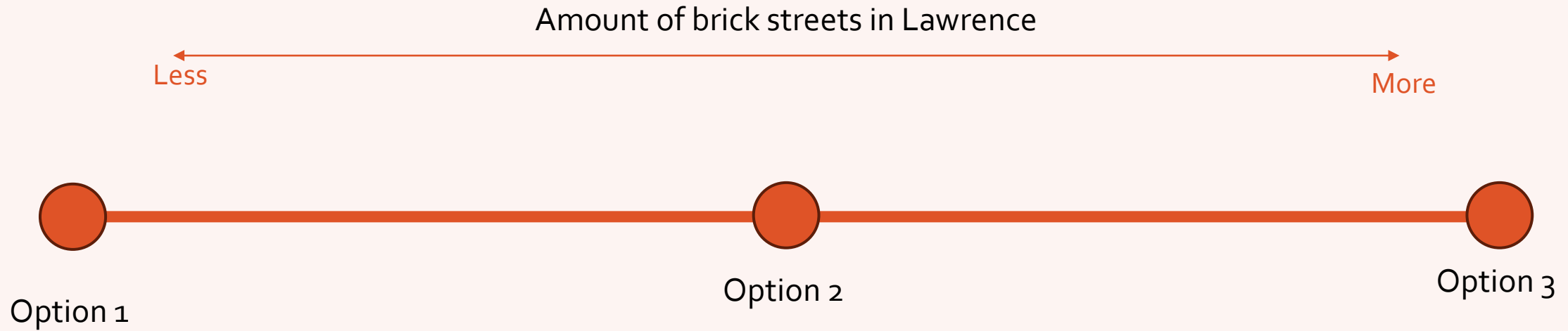
- concrete or
- enhanced brick sidewalk specifications (specs TBD by policy)

Properties outside of the policy map boundary would be required to replace with concrete.

Existing Conditions



POLICY DIRECTION - STREET



All options are built on the value priorities of **Safety, Sustainability, and Tradition** identified by the community and include practical implementation strategies for the City of Lawrence.

POLICY DIRECTION - STREET

Option 1 of 3

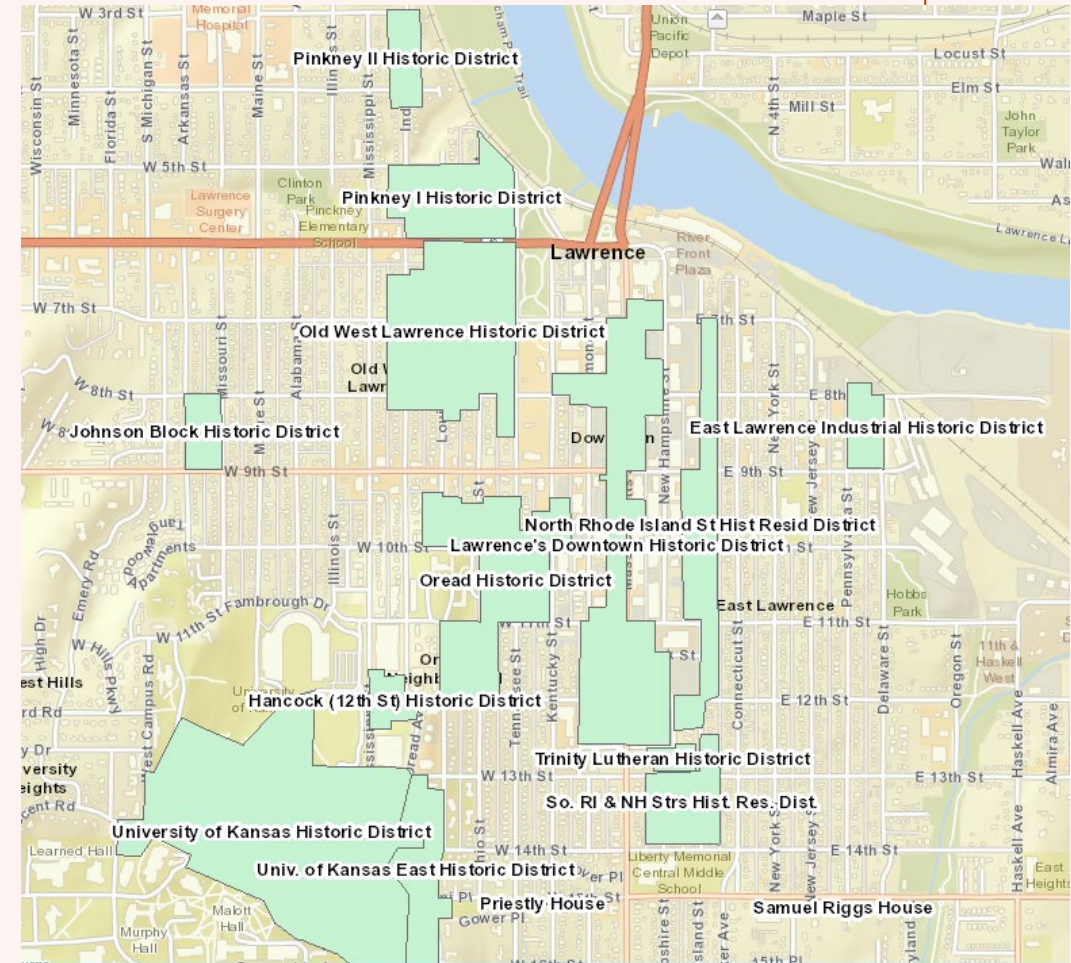
All brick streets in local/ state/ national historic districts to remain brick.

Existing brick streets in historic districts are recommended to be protected and preserved by the nomination paperwork associated with their local/ state/ national historic designation. This also aligns with the feedback received from the community regarding their value of tradition for brick streets.

- Historic District brick streets be prioritized for brick restoration.
- During entire block brick restoration efforts, limestone curbs will be preserved and replaced as supply allows.

For streets **outside** of historic districts:

- Streets in poor condition outside of district boundaries could be paved.
- Limestone curbs may be collected when street is paved for future use in historic areas.



POLICY DIRECTION - STREET

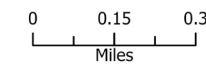
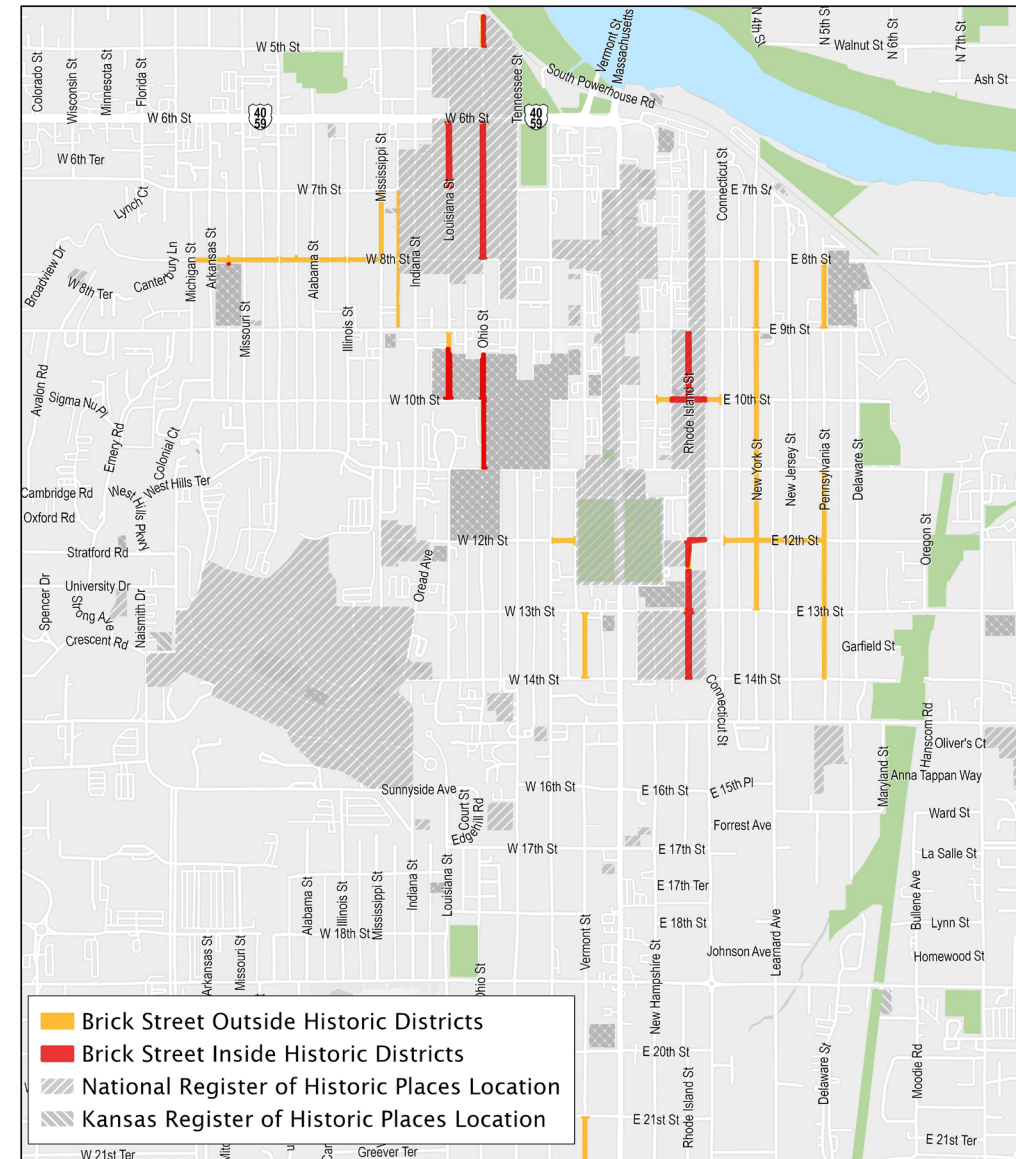
Option 2 of 3

All brick streets in historic districts & areas identified as protected on policy map to remain brick.

- Historic District brick streets be prioritized for brick restoration.
- During entire block brick restoration efforts, limestone curbs will be preserved and replaced as supply allows.

For streets **outside** of protected area:

- Streets in poor condition outside of district boundaries *could* be paved.
- Limestone curbs may be collected when street is paved for future use in historic areas.



Date Exported: 4/30/2024
Source: Federal Functional Classification (2021) and Gathered Survey data
Produced: Lawrence-Douglas County MPO

DISCLAIMER NOTICE
The map is provided "as is" without warranty or any representation of accuracy, timeliness or completeness. The burden for determining accuracy, completeness, timeliness, merchantability and fitness for or the appropriateness for use rests solely on the requester. The City of Lawrence makes no warranties, express or implied, as to the use of the map. There are no implied warranties of merchantability or fitness for a particular purpose. The requester acknowledges and accepts the limitations of the map, including the fact that the map is dynamic and is in a constant state of maintenance, correction and update.

POLICY DIRECTION - STREET

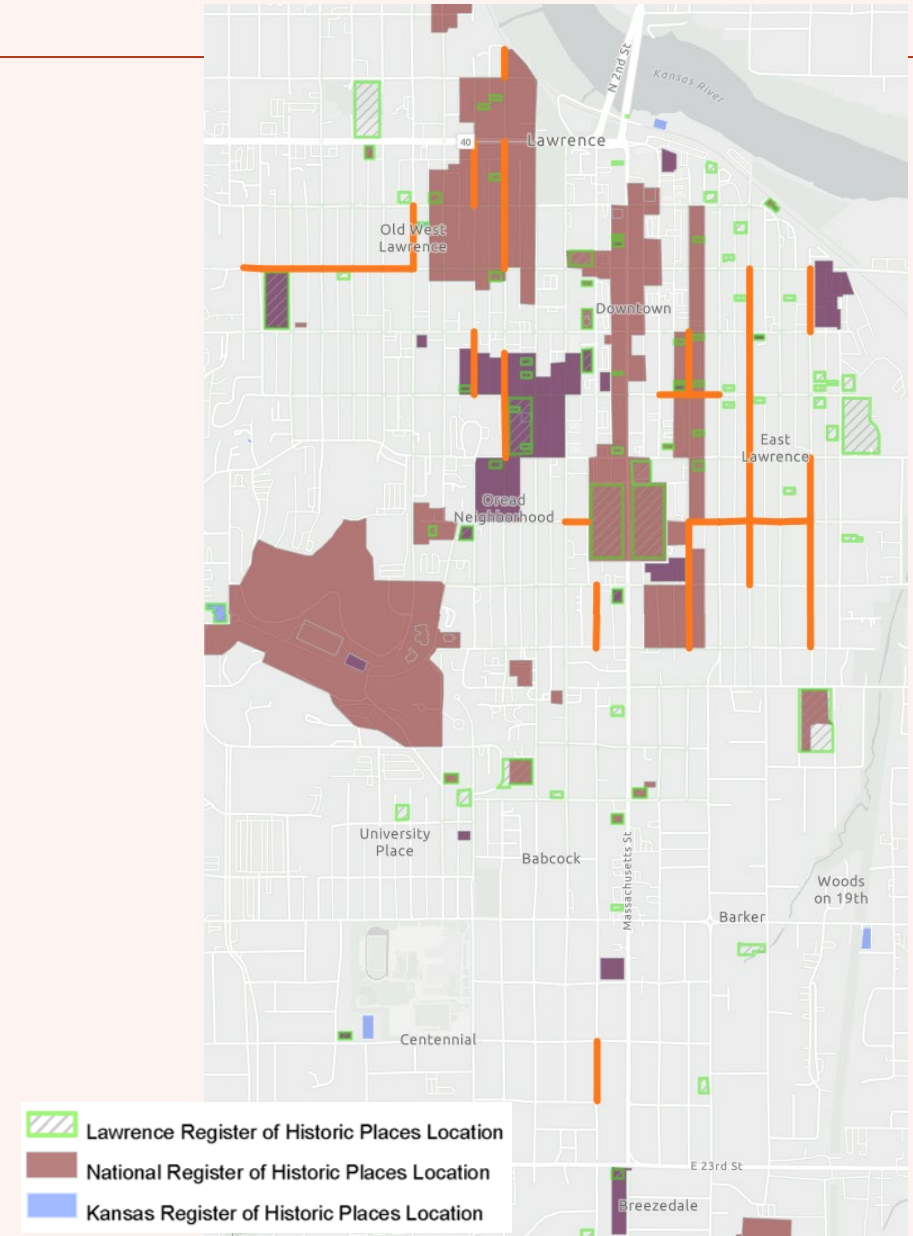
Option 3 of 3

All existing brick streets to remain brick.

Utilize Asset Management plan to identify which streets are prioritized for restoration.

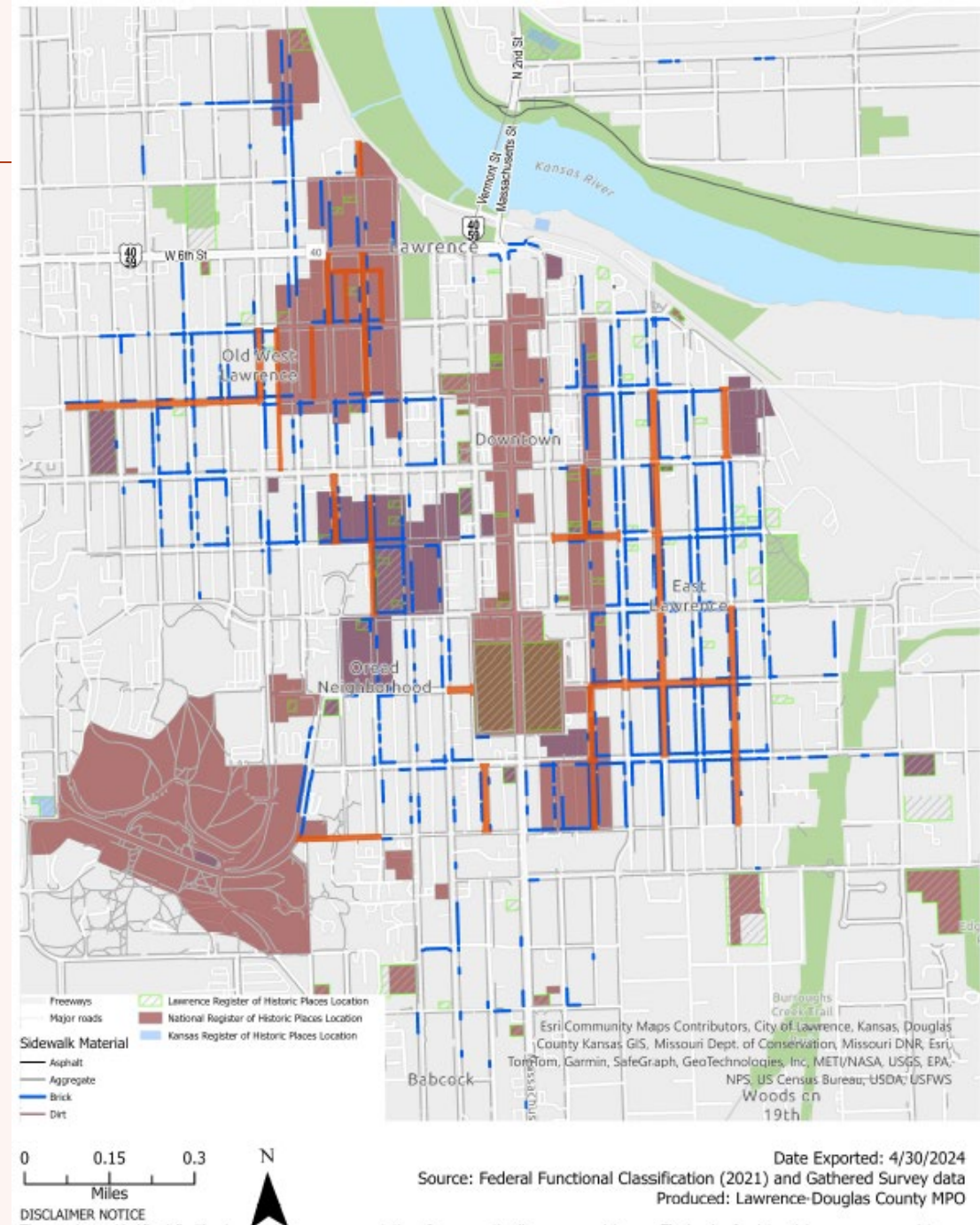
The BS+S Subcommittee/ Community feedback/ HRC / MMTTC can provide preference for areas to be restored, however this guidance would be weighed against asset management best practice and PCI scores.

Existing Conditions



EXISTING CONDITIONS

- Brick Sidewalk
- Brick Streets
- Lawrence Register of Historic Places Location
- National Register of Historic Places Location
- Kansas Register of Historic Places Location



CALENDAR

~~Meeting #1 – Intro (March 25, 2024)~~

~~Meeting #2 – what we heard /policy direction (May 7, 2024)~~

Meeting #2.5 – continue discussion from meeting #2



Meeting #3 - review draft policy (Schedule sometime June 4-7th)

Time of day preference?

Meeting #4 - finalize policy (Schedule sometime July 22-26th)

CALENDAR

Staff proposed public meetings & engagement activities

~~Open House – Community conversation on values (April 4, 2024 – Carnegie Building)~~

~~Values survey 15-days (April 4 – April 19)~~

Open House – Draft policy publication & education (June 20th – Library)
15-day Public Comment period (following publication)

MMTC – Study Session (July 1, 2024)

HRC - Review proposed policy, recommend map. (July 18, 2024)

MMTC – Review proposed BS+S policy (August 5, 2024)

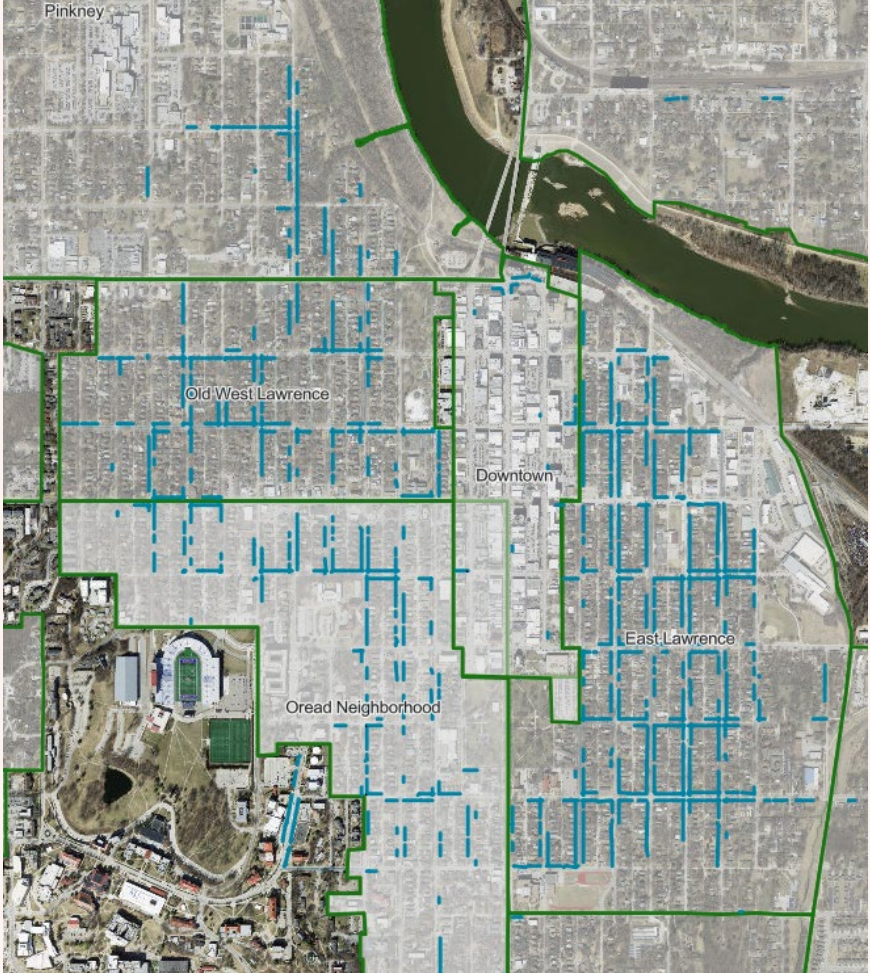
City Commission – Recommend Approval of BS+S Policy (August 20th or September 3rd)

THANK YOU

Visit www.lawrenceks.org/brick
to stay up-to-date + view
additional information

EXISTING CONDITIONS

BRICK SIDEWALKS



BRICK STREETS

