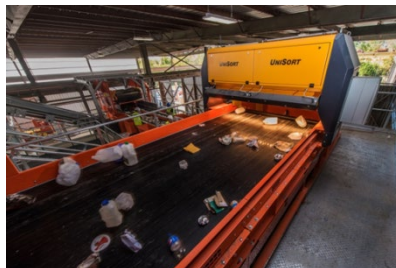




City of Lawrence

## Hamm Material Recovery Facility 2023 Annual Report to the City of Lawrence, Kansas



January 26, 2024

Mike Lawless  
Municipal Services & Operations  
PO Box 708  
Lawrence KS 66044

Hamm is pleased to provide the 2023 annual report for Hamm Material Recovery Facility. As laid out in our agreement, Hamm is to provide information on the following areas:

- **Materials Processed and Marketed:** Cardboard, Mixed Paper, Newspaper, Carrier Stock, PET, HDPE Natural, HDPE Colored, #3-7 Plastics, Mixed Rigid Plastics, Steel Cans, Aluminum Cans, 3-Mix Glass, Glass Fines.
- **End Markets/Major Purchasers:** Pratt, Custom Polymers, International Paper, Alcoa, Tube City, KW Plastics, Batliner, Sonoco, Ripple Glass, GP Harmon Recycling, QRS Recycling, Kronick Industries, Advantage Metals, Hamm Quarry. (See Appendix III, IV for commodity pricing history)
- **Materials Composition Analysis:** See Appendices for 2023 material composition analyses and audits.
- **Rejected Loads:** Hamm inspects and processes all loads delivered and rejected zero loads in 2023. The City's focus on delivering high quality single stream is important to the sustained success of the system and is appreciated.
- **Equipment Additions/Deletions:** While Hamm continuously adjusts our processing system to optimize recycled material/diversion, Hamm has not modified the processing line significantly.
- **Incidents:** Hamm encountered no serious complaints, accidents, incidents, or downtime in 2023. It is our contention that this is a direct result of partnering with the City on recycling and cooperating/communicating on a daily basis.

As always, Hamm appreciates the opportunity to serve Lawrence's recycling and processing needs. Should you have any questions on any of this material, feel free to contact me.

Sincerely,



Charlie M. Sedlock

School/Organization Tours – Hamm provides tours to students and different organizations in order to increase awareness of our recycling system and process.



**Free State High School – 2023**

**10 tours were conducted at the MRF Facility by Hamm, totaling 400+ participants!**



### FALL 2023 – Through Put Study Results

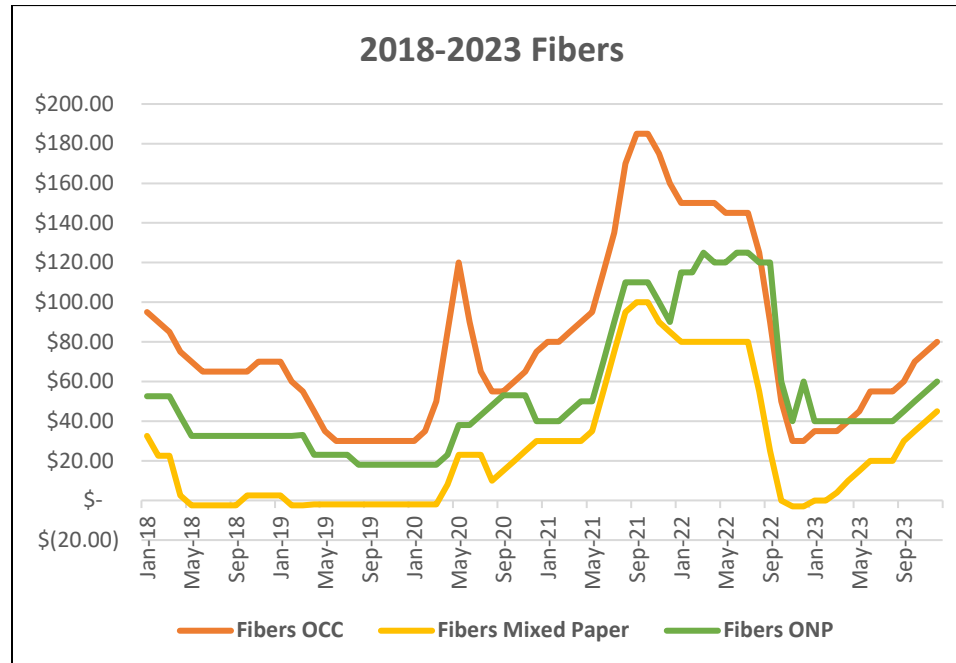
#### Appendix II – Fall November 2023 Through Put Study Rebate Composition

Rebate Composition																		
	Cardboard	Mix Paper	Newspaper	HOPE Natural	HOPE Color	PET	#3-7 Plastics	Mixed Rigid Plastics	Steel Cans	Aluminum	3-Mix Glass	Glass Fines	Scrap Steel (Trash)	Aluminum Foil/Scrap (Trash)	Glass (Trash)	Loose Trash	Totals	
Weight	4,153	2,715	1,970	241	318	680	401	10	398	399	2,640	220	60	2	0	1,700	15,907	
%	26.1%	17.1%	12.4%	1.5%	2.0%	4.3%	2.5%	0.1%	2.5%	2.5%	16.6%	1.4%	0.4%	0.013%	0.0%	10.7%	100%	
																<b>Rebate Composition</b>	<b>Rebate Items</b>	<b>88.9%</b>
																	<b>Residuals</b>	<b>11.3%</b>

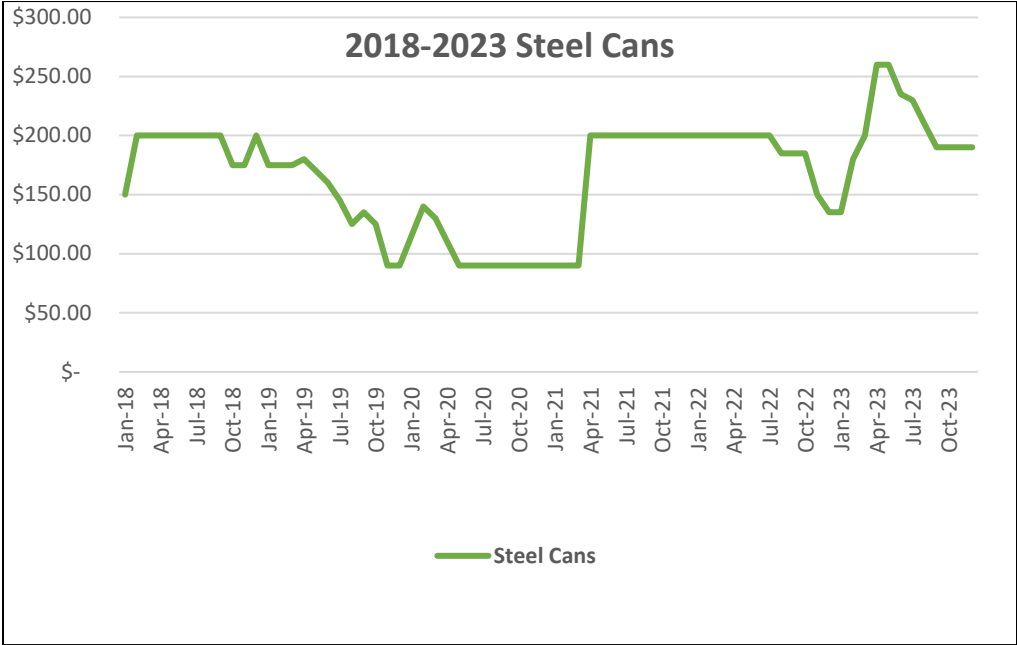
#### Appendix II – Fall November 2023 Through Put Study Rebate Recycling and Diversion Composition

Rebate Recycling and Diversion Composition																		
	Cardboard	Mix Paper	NewsPaper	HOPE Natural	HOPE Color	PET	#3-7 Plastics	Mixed Rigid Plastics	Steel Cans	Aluminum	3-Mix Glass	Glass fines	Scrap Steel (Trash)	Aluminum Foil/Scrap (Trash)	Glass (Trash)	Loose Trash	Totals	
Weight	4153	2715	1970	241	318	680	401	10	398	399	2640	220	60	2	0	1700	15,907	
%	26.1%	17.1%	12.4%	1.5%	2.0%	4.3%	2.5%	0.1%	2.5%	2.5%	16.6%	1.4%	0.4%	0.013%	0.0%	10.7%	100.0%	
																<b>Rebate Recycling and Diversion Composition</b>	<b>Recycling &amp; Diversion</b>	<b>89.3%</b>
																	<b>Residuals</b>	<b>10.7%</b>
																	<b>Residuals</b>	<b>10.7%</b>

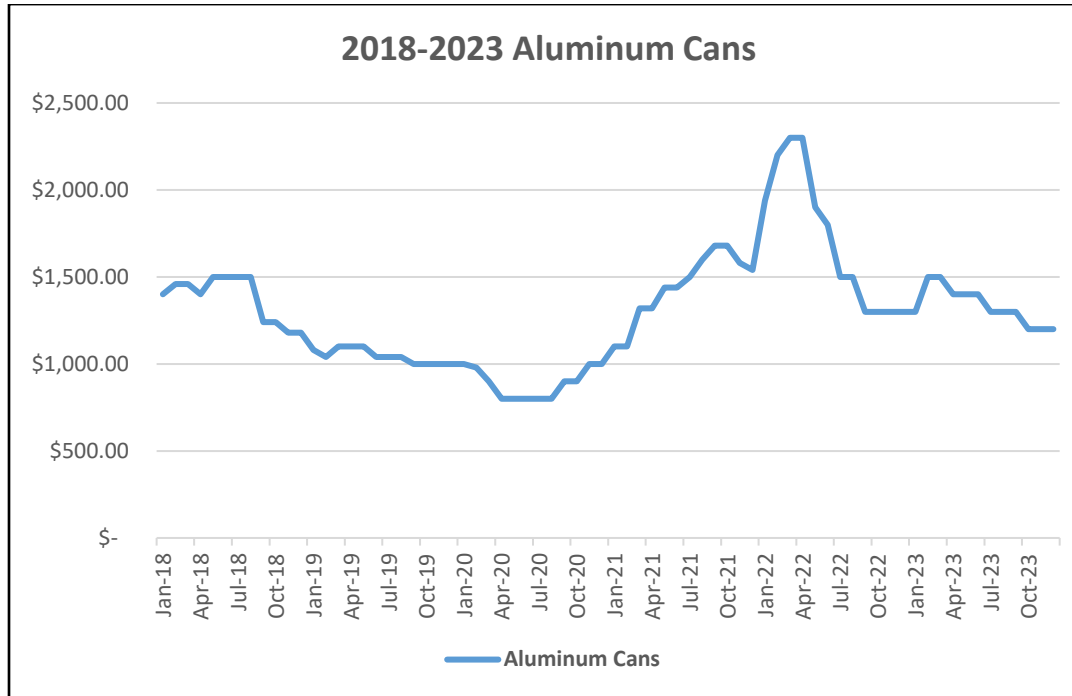
Appendix III



Appendix IV



Appendix V





Appendix VI

