



Brick Streets & Sidewalks

Policy Development

Purpose



The comprehensive plan (Plan 2040) identifies brick streets and sidewalks as a **community resource** and states the following goals:

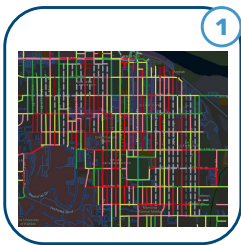
“Maintain, protect, and restore existing brick streets, sidewalks, and hitching posts within Lawrence.”

...and...

“Formalize a review process for all public improvements to determine potential effects on preservation efforts.”



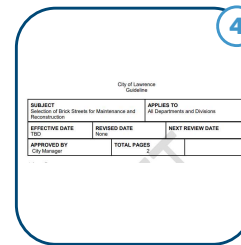
Brief History



1

2005

City completed the first cycle of the street pavement condition inventory for the Pavement Management System (PMS)



4

2014

City staff presented* a proposed brick street maintenance policy to the City Commission.

*policy not adopted.



2

2011

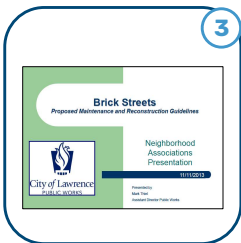
City Auditor recommends the City establish guidance on maintaining streets that are brick and asphalt over brick.



5

2017

Brick Street + Sidewalk Policy reintroduced to City Commission by City Auditor and Public Works Director as a priority.



3

2013

City staff worked with the Historic Resources Commission and neighborhood associations to understand brick street concerns and gather feedback.

(East/ West discussion)



6

2020

City staff met with Neighborhood Special Interest Group. This group proposed a policy to staff with their recommendations to the City.

What's different now?

The delay in adopting a formal policy is likely in part due to shifting City priorities and staff turnover.

Transportation Planners are engaged in the process now!

The 2024 budget process identified the priority to develop a comprehensive Brick Streets and Sidewalk Policy.

Moving forward staff suggests a **subcommittee** be established to engage stakeholders with special interest in the areas of Lawrence where historic brick streets and sidewalks are present, as well as members of the community who are familiar with limited accessibility and the movement of people with a range of abilities.



Proposed Steering Committee Members

(2-3) Multimodal Transportation Commission;

(4) Neighborhood Association members;

- Old West Lawrence
- East Lawrence
- Oread Neighborhood
- Pinkney

(1) Independence, Inc Accessibility taskforce;

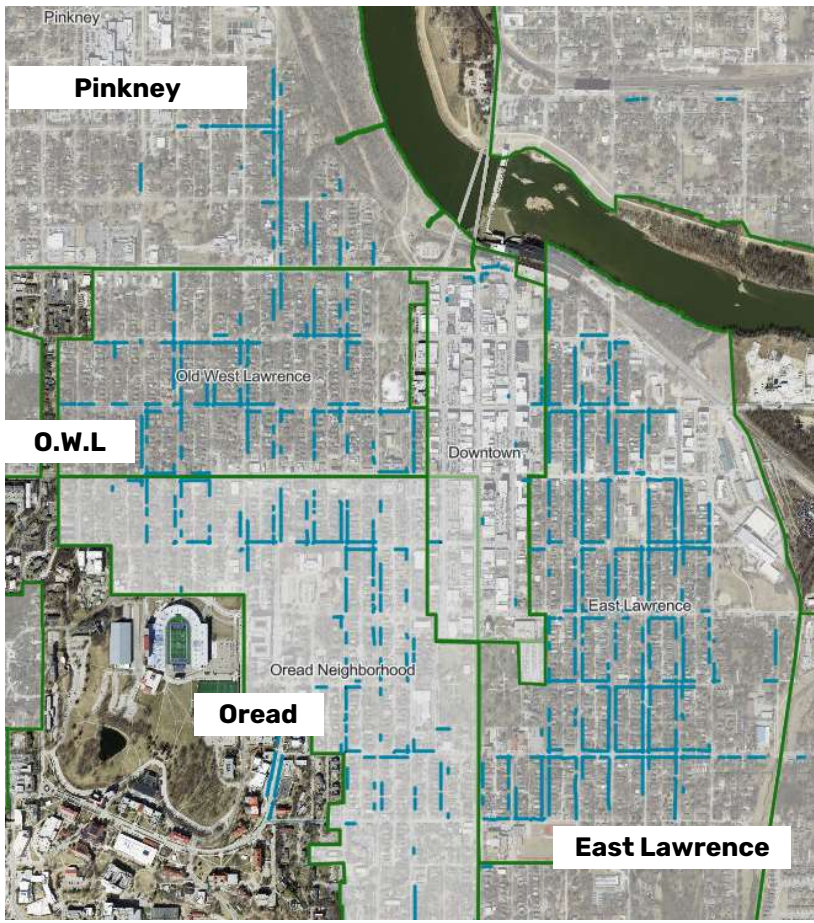
(1) University of Kansas; and

(1) Historic Resources Commission.

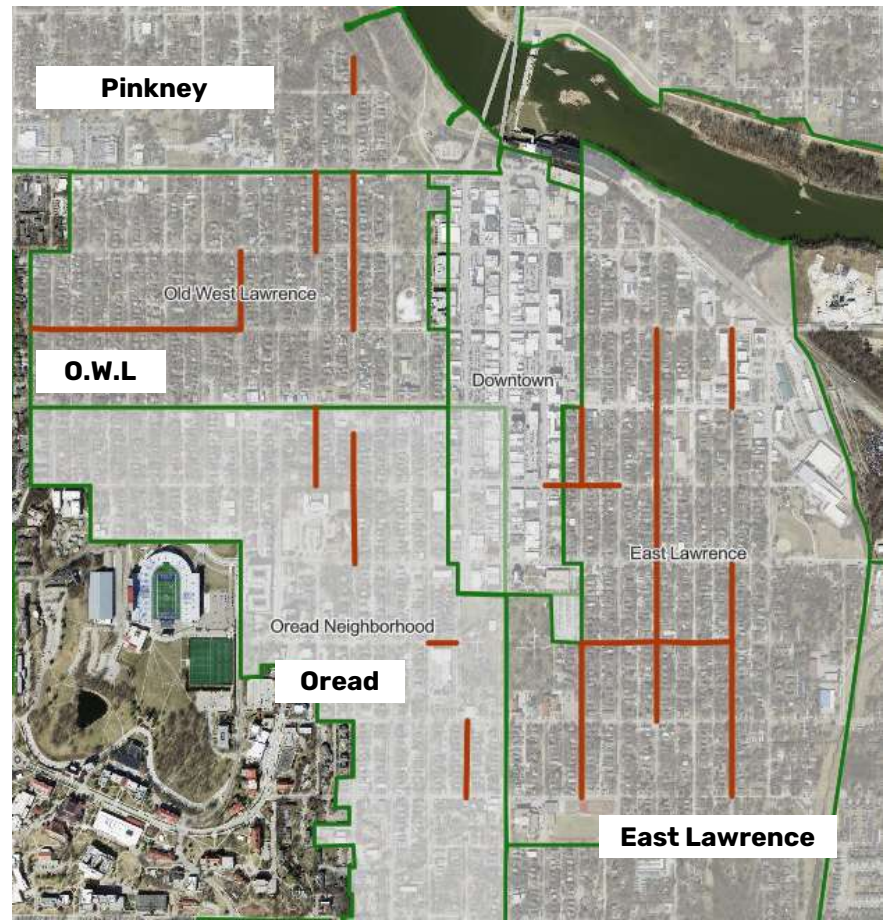
10 members best for
effective working group



BRICK SIDEWALKS



BRICK STREETS



A staff working group will provide technical assistance throughout policy development and represent relevant City departments.

- Land-Use Planning
- Historic Resources
- Asset Management
- Engineering
- Transportation Planning
- Forestry
- ADA Compliance
- Field Operations

Staff will work with the subcommittee to develop a scope of work and community engagement plan for the process.

Staff Working Group



Timeline

Subcommittee to meet 3 times in the next 6 months.

Staff working group will meet before each meeting and provide technical assistance as needed.



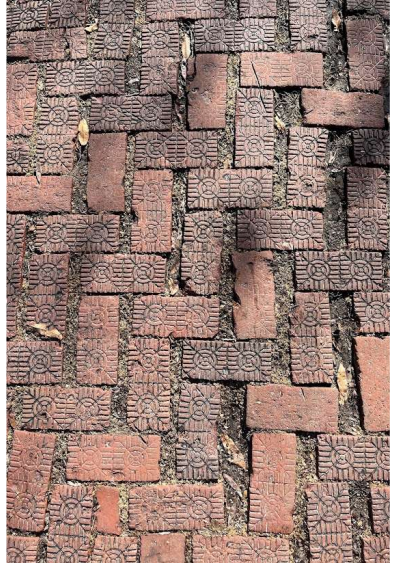
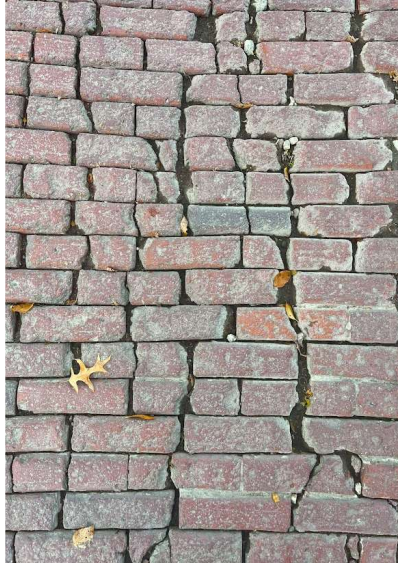
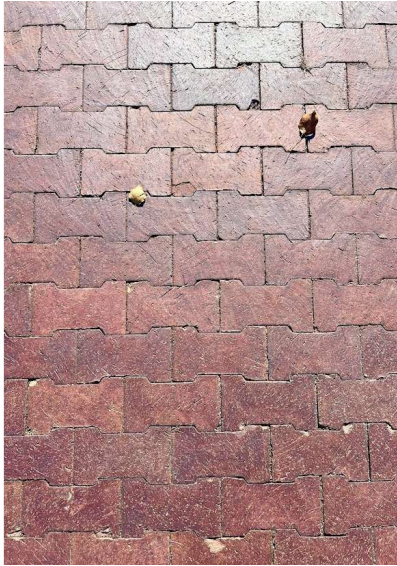
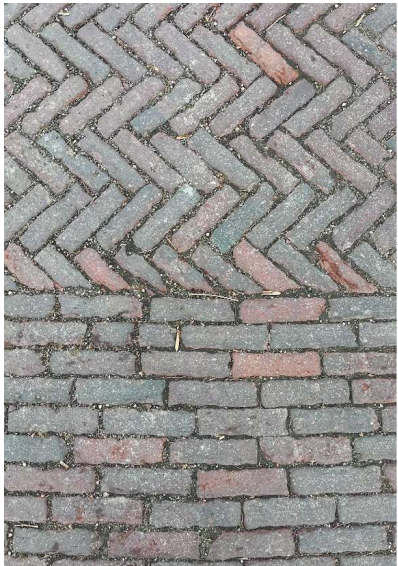
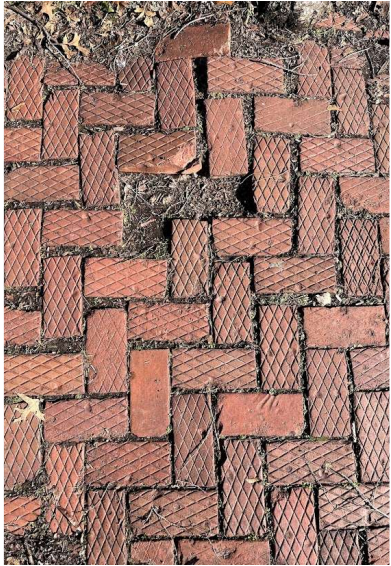
	MMTC meeting on February 5 th to appoint members to BS+S Subcommittee.
February	Meet with BS+S Subcommittee. <ul style="list-style-type: none">• Understand and prioritize conflicting values. Agree to scope/timeline. Discuss public engagement process. Educate on existing plans and synergy across existing and proposed policies.
March	Host open house (education) 15-day survey of weighted values
April	Staff draft policy
May	Meet with BS+S Subcommittee. <ul style="list-style-type: none">• Discuss policy drafted by staff. Recommend changes. Publish draft policy (15 day or 30 day public comment period)
June	Host open house (education + feedback) Staff finalize policy Meet with BS+S Subcommittee. <ul style="list-style-type: none">• Discuss "what we heard" and proposed changes to draft policy. Final feedback from subcommittee will be drafted to share with the MMTC.
July	MMTC meeting – approve policy draft. City Commission meeting with recommendation of approval from MMTC

Deliverables

New approach intentionally brings relevant staff to the table early in the process and defines the scope of the policy with the subcommittee. The policy should reflect the community's **values and priorities**, as well as have attainable and practical implementation strategies for the City of Lawrence.

- 1 Brick Streets + Sidewalks policy
- 2 A staff report with public engagement summary, history overview, and best practices.
- 3 Policy adoption by Fall of 2024







Thank You

