

LDCFM

LAWRENCE-DOUGLAS COUNTY FIRE MEDICAL



2023

ANNUAL REPORT



TABLE OF CONTENTS

TABLE OF CONTENTS	1
LDCFM MISSION AND VALUES	3
MESSAGE FROM THE FIRE CHIEF	4
LDCFM EXECUTIVE TEAM	5
ORGANIZATIONAL CHART	6
LDCFM OVERVIEW	8-11
2023 INCIDENT BREAKDOWN	12
ADMINISTRATION DIVISION	14-15
EMERGENCY MEDICAL SERVICES DIVISION	16-17
OPERATIONS DIVISION	19-20
PREVENTION DIVISION	21-22
TRAINING DIVISION	23-24
IAFF LOCAL 1596	26-27

LDCFM GRANT ACHIEVEMENTS	28-29
ENGLEMAN ROOM DEDICATION	30-31
LDCFM HOSTS DR. DAVID GRIFFIN	33-34
PROMOTIONS, RETIREMENTS, & RECOGNITIONS	35-38





OUR MISSION:

"We are committed to saving and protecting lives and property through service to our community."

OUR VALUES:

Professionalism

Respect

Integrity

Diversity

Excellence



MESSAGE FROM THE CHIEF



RICH LLEWELLYN FIRE CHIEF

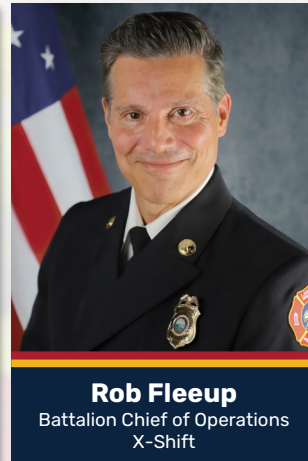
Thank you for your interest in Lawrence-Douglas County Fire Medical (LDCFM). Our more than 160 women and men are committed to providing the highest quality of service to our community every day of the year. The fire and emergency medical services industries operate in environments of nearly continuous change and 2022 was no exception.

As your Fire Chief, some of my personal highlights from 2023 included the arrival of new apparatus that exhibited the LDCFM's new color scheme and brand communication. Since the 1997 merger that formed today's department, the partnership between the City of Lawrence and Douglas County hasn't been fully recognized on our vehicles, with one entity often identified in smaller print or not at all. Starting with 2023 arrivals, and moving into the future, this governing partnership will be fully recognized by our logos and graphics.

I am truly proud of our employees and many of them achieved career milestones in 2023. A total of fourteen (14) employees graduated from paramedic programs, which has been a requirement for new employees since 2020. LDCFM also saw one employee also graduated with an Associate's Degree. Completing these programs while serving our community represents a significant investment for our employees and their families.



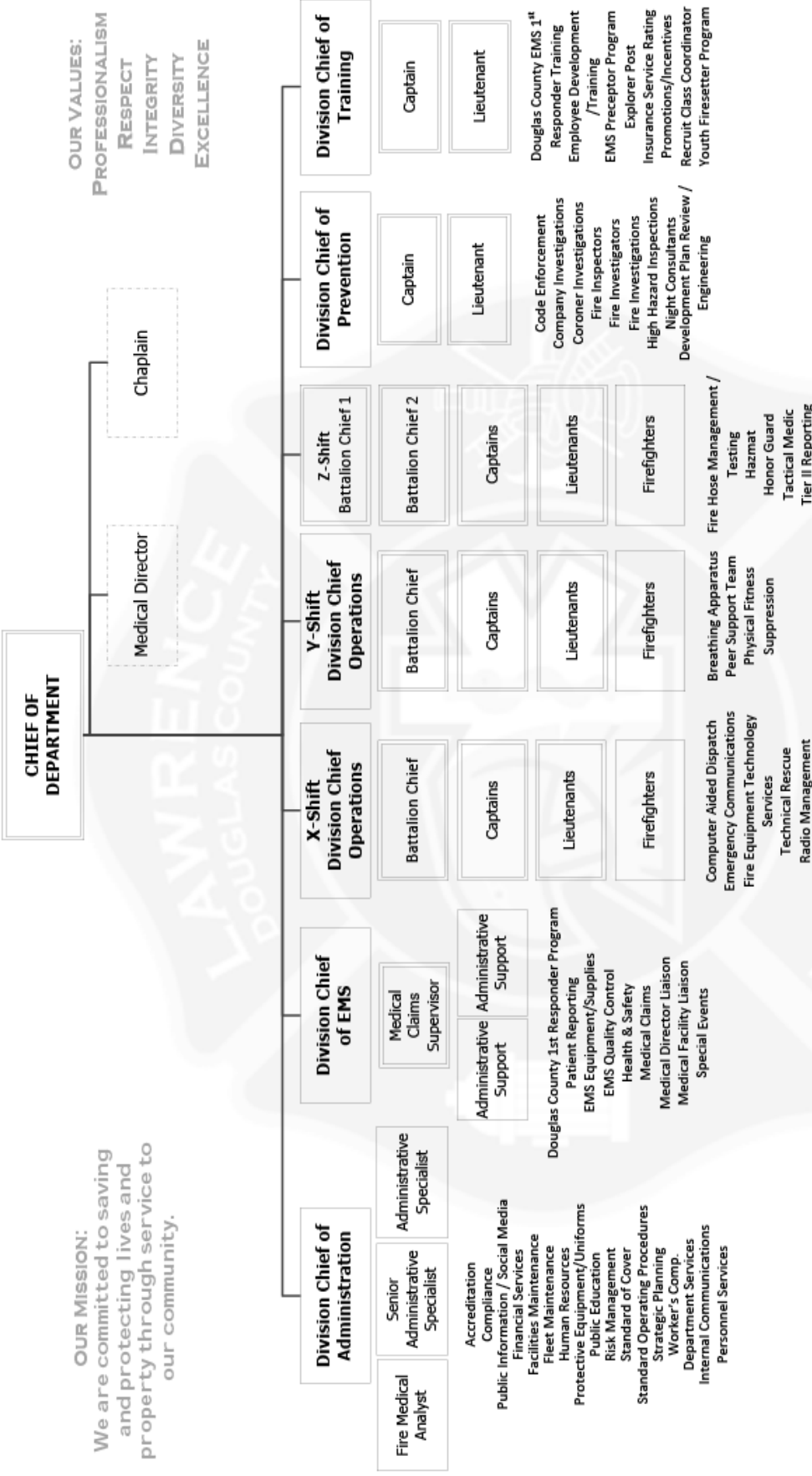
LDCFM EXECUTIVE TEAM



LDCFM ORGANIZATIONAL CHART

Lawrence-Douglas County Fire Medical

ORGANIZATIONAL CHART



CFAI Internationally Accredited Agency Since 2008
ISO Class 1 Community







LDCFM OVERVIEW

Lawrence-Douglas County Fire Medical (LDCFM) operates as an all-hazards fire department, delivering emergency services, including fire suppression, hazardous material technician response, technical rescue technician response, and fire-based emergency medical service at the advanced life support (ALS) level.

LDCFM operates from seven stations which are strategically positioned across the City of Lawrence and Douglas County.



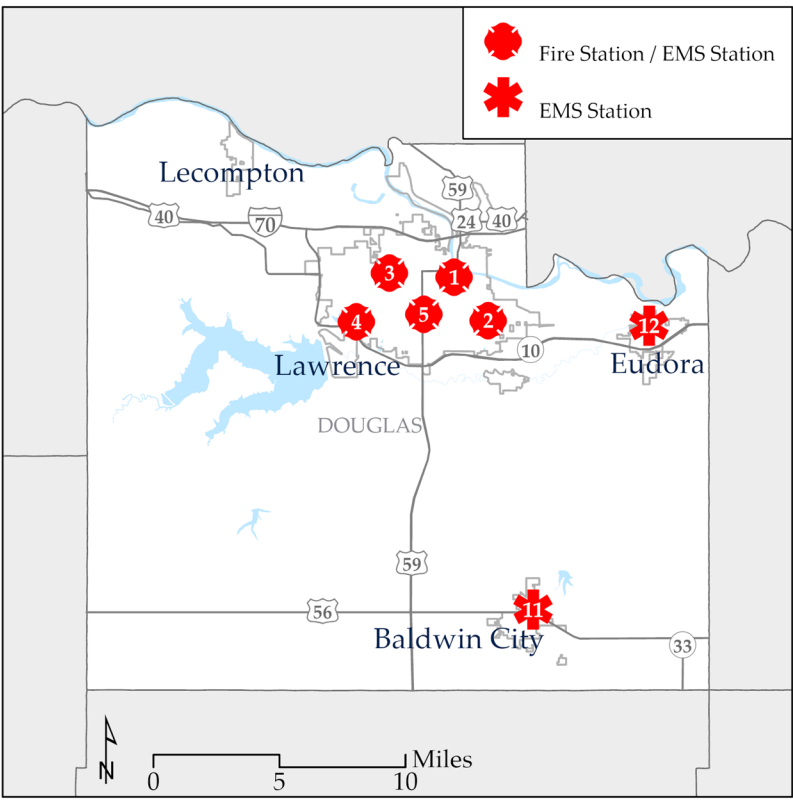
LDCFM OVERVIEW

Population	Lawrence	Douglas County	Total
Population Served	94,934	23,851	118,785
Number of Stations	5	2	7
Square Miles Covered	34.86 sq mi	475 sq mi	475 sq mi

LDCFM Employees	Total
Civilian Staff	9
Sworn / Uniformed	159
Total Personnel	168

LDCFM Resources	Total
Fire / EMS Stations	5
EMS Stations	2
Primary Ambulances	7
Primary Fire Apparatus	6
Rescue UTVs	2
Water Rescue Boats	2

2023 Adopted Budget	Total
Operating Budget	\$30,158,000
Capital	\$1,040,000



LDCFM OVERVIEW



Station 1
746 Kentucky St.



Station 2
2128 Harper St.



Station 3
3708 W. 6th St.



Station 4
2121 Wakarusa Dr.



Station 5/Administration
1911 Stewart Ave.



Station 11 (Baldwin)
212 Kibbee St.



Station 12 (Eudora)
930 Main St.



Training Tower/Center
1941 Haskell Ave.

Lawrence-Douglas County Fire Medical offers a variety of services to community members! Please contact our Administration Office or visit our website to request these services / find out more information!

- ⇒ Hands-Only CPR Training
- ⇒ Fire Extinguisher Training
- ⇒ Fire Investigators
- ⇒ Firefighter Visits
- ⇒ Fire Truck Visits
- ⇒ Fire Medical Station Tours
- ⇒ Explorer Post Program
- ⇒ Juvenile Fire Setter Intervention
- ⇒ Smoke Alarm Assistance
- ⇒ Fire Inspections
- ⇒ Community Ride-Alongs
- ⇒ Fire Drills



LDCFM Administration

1911 Stewart Avenue

Lawrence, KS 66046

Phone: (785) 830-7000 | Fax: (785) 830-7090

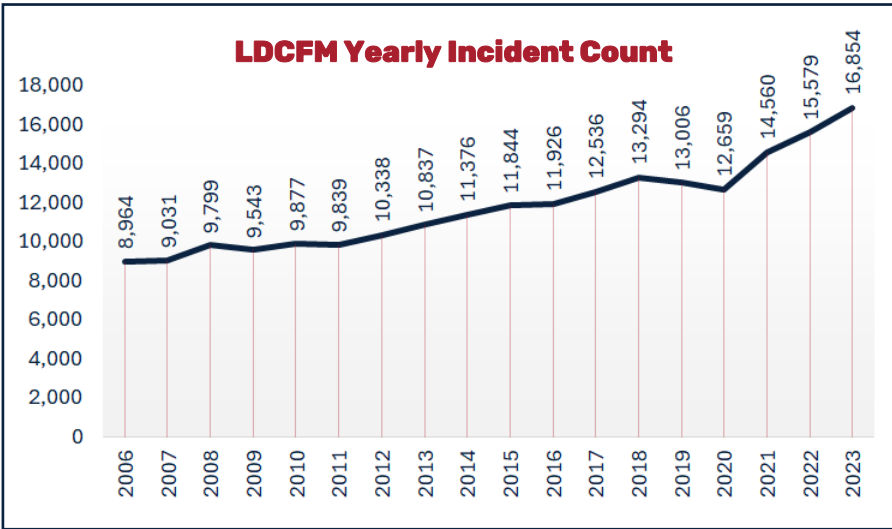
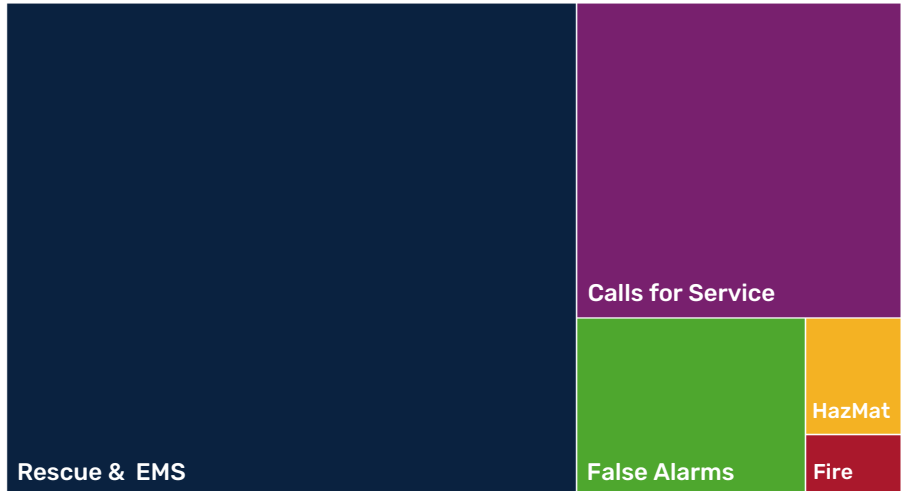
Website: www.lawrenceks.org/fire-medical



2023 INCIDENT BREAKDOWN

2023 LDCFM Incident Distribution

2023 LDCFM Incidents	
Fire	222
Rupture / Explosion	14
Rescue & EMS	10,722
Hazardous Materials	428
Service Call	1,639
Good Intent	2,268
False Alarm	1,557
Severe Weather	2
Special Incident	2
Total	16,854



📞 Top 10 Call Types in 2023		
1	Sick Person	2,073
2	Fire Alarm Lvl 2	1,443
3	Fall	1,394
4	Lift Assist	1,093
5	Breathing Problems	948
6	Unconscious	908
7	Chest Pain	701
8	Convulsions/Seizures	526
9	Hemorrhage	448
10	Psychiatric	434







ADMINISTRATION DIVISION

The Administrative Division is managed by the Division Chief of Administration and supported by three civilian administrative personnel. These members provide support to the Fire Chief, LDCFM Executive Staff, and the other divisions within the department.

These members also act as liaisons with other City of Lawrence and Douglas County departments.



ADMINISTRATION DIVISION

LDCFM Achieves Fourth Accredited Status

In 2022, LDCFM began their fourth accreditation cycle, having first achieved accreditation in 2008 through the Commission on Fire Accreditation International (CFAI). LDCFM successfully achieved accreditation renewal (this process takes place every 5 years) in 2013, and again in 2018.

In 2023, LDCFM received Accredited Agency status with the CFAI for meeting the criteria established through the CFAI's voluntary self-assessment and accreditation program. LDCFM is one of more than 300 agencies to achieve Internationally Accredited Agency status with the CFAI and the Center for Public Safety Excellence, Inc. (CPSE)

CFAI is dedicated to assisting the fire and emergency service agencies throughout the world in achieving excellence through self-assessment and accreditation to provide continuous quality improvement and the enhancement of service delivery to their communities. The CFAI process is voluntary and provides an agency with an improvement model to assess their service delivery and performance internally and then works with a team of peers from other agencies to evaluate their completed self-assessment.

LDCFM Chief Rich Llewellyn stated that the achievement of Accredited Agency status "demonstrates a community-wide commitment to the continuous improvement process." Llewellyn also said, "We view the CFAI's accreditation process as a tool for evaluating current performance and planning for the LDCFM's future."

Special thank you to all LDCFM, City of Lawrence, and Douglas County members who participated in this cycle. We could not have done it without your dedication and collaboration.



LDCFM receives fourth Accreditation status



Chief Llewellyn, KS Senator Marci Francisco, and Chief Joles

Legislative Discussions on EMS Challenges

Division Chief of EMS Kevin Joles and Fire Chief Rich Llewellyn visited the state capitol in Topeka to address statewide EMS issues alongside colleagues from the Kansas EMS Association (KEMSA). During their time at the capitol, they met with Senator Marci Francisco, who represents parts of Lawrence and Douglas County. The discussions covered critical topics such as EMS transport reimbursement rates and the impact of post-traumatic stress disorder (PTSD) on emergency



LDCFM and OFD members pose in KU's Allen Fieldhouse

LDCFM Collaborate with Eastern Neighbors

Administrative and Executive Staff members from the City of Olathe Fire Department (OFD) and LDCFM came together to discuss strategies for better serving our communities. This collaborative meeting emphasized the importance of sharing knowledge and experiences, as we learned best from our peers who also serve the citizens of Olathe, Kansas.

The exchange of ideas and best practices between departments fostered stronger partnerships and improved our ability to protect and serve. Thank you for the visit, OFD! Together, we are stronger.





EMS DIVISION

The Emergency Medical Services (EMS) Division is managed by the Division Chief of EMS, who also oversees a civilian EMS Logistics Technician for medical supply management, and the Medical Billing Division who is supported by two civilian medical claims positions.

The EMS Division is responsible for numerous functions of the department such as community relations, employee wellness program, EMS quality control, medical billing, and recruitment / hiring.



LDCFM Launches the MIH Program

The Mobile Integrated Health (MIH) program in Lawrence and Douglas County, Kansas, is a proactive healthcare initiative designed to provide comprehensive medical care and support to the community outside of traditional healthcare settings. The program focuses on delivering timely and personalized care by utilizing mobile units equipped with medical professionals, equipment, and resources to address various healthcare needs.

MIH aims to bridge gaps in healthcare access, especially for underserved populations or individuals facing barriers to traditional healthcare services. This program offers a range of services, including preventive care, chronic disease management, urgent care, mental health support, and health education. By bringing healthcare directly to neighborhoods, homes, or workplaces, MIH reduces emergency room visits, prevents unnecessary hospitalizations, and promotes overall community well-being.



The MIH Team is able to travel to a patient to provide care / resources in the field

New Faces to the EMS Division



Courtney Simanowitz, MIH Technician / Paramedic



Rylee Broadbent, EMS Administrative Specialist



Charlie Cooper, EMS Logistics Technician



Dr. Ben Cross, Douglas County Medical Director

LDCFM EMS Division: Leading the Way in Community Care and Operational Excellence

LDCFM's EMS Division is a dedicated team committed to providing exceptional prehospital care and support to our internal and external stakeholders and community. Leading the division is the Division Chief of EMS, whose strategic vision and leadership ensure the highest standards of emergency medical services.

The Medical Billing Supervisor oversees the accurate and efficient processing of medical claims, contributing to the financial sustainability of our services.

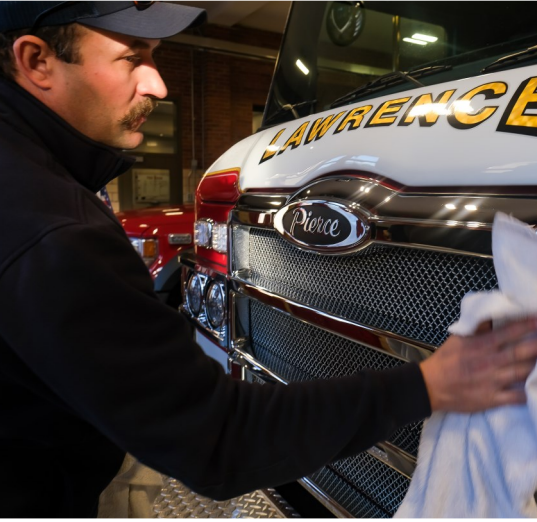
The EMS Logistics Technician, a new position to the department in 2023, plays a crucial role in maintaining and managing essential medical supplies and equipment, ensuring our responders are always prepared.

The EMS Administrative Specialist, a newly reclassified position in 2023, provides invaluable support in coordinating administrative tasks and streamlining operations including ambulance billing.

In addition, the Mobile Integrated Health Team works tirelessly to bridge gaps in care, offering innovative solutions to meet the diverse needs of our community. Together, this dedicated team embodies the commitment to excellence and community service that defines LDCFM.

Dr. Ben Cross: Guiding Superior Pre-Hospital Care in Douglas County

Dr. Ben Cross serves as the medical director for the Douglas County, KS EMS System, where he provides expert guidance and oversight to ensure the highest standards of pre-hospital emergency medical care. His leadership plays a crucial role in maintaining the department's commitment to excellence in prehospital services and patient outcomes. Dr. Cross is deeply involved in advancing the quality of care provided to the community through continuous education and protocol development.





OPERATIONS DIVISION

The Operations Division is led by six (6) Operations Chief Officers. They're responsible for the emergency and administrative activities of over 140 members assigned to their shift.

The Operations Division is responsible for providing services such as emergency medical services (EMS), fire suppression, hazardous materials, prevention, and specialized technical rescue teams (confined space, mass casualty, rope rescue, structural collapse, and water / ice rescue).



OPERATIONS DIVISION

LDCFM is an All-Hazards Department

FIRE SUPPRESSION: LDCFM provides a broad range of responses to structure fires involving single-family dwellings, multifamily dwellings, and high-rise commercial and industrial occupancies. Additionally, high-hazard structures such as institutional facilities, schools, nursing homes, assisted living facilities, and congregate housing (sororities/fraternities).

EMERGENCY MEDICAL SERVICES (EMS): LDCFM provides first responder medical care at the basic life support (BLS) and advanced life support (ALS) service levels. The department provides seven primary and five secondary ALS ambulances. All primary fire apparatus are equipped with a full complement of ALS equipment, including cardiac monitors, advanced respiratory equipment, as well as cardiac medications, and intravenous therapy supplies.

TECHNICAL RESCUE: LDCFM provides firefighters trained in various aspects of technical rescue to respond to emergencies for confined space, vehicle extrication, trench rescue, structural collapse, high-angle rope rescue, and water/ice rescue.

HAZARDOUS MATERIALS: LDCFM is staffed and equipped to respond to county-wide hazardous materials (hazmat) incidents. LDCFM is responsible for offensive and defensive operations; however, the department does not collect or dispose of any hazardous materials.

WILDLAND FIRE SERVICES: LDCFM provides wildland/grass fire suppression services within the city and Grant Township while also providing mutual aid to surrounding areas. The department is focused on increasing our capabilities in this area as the threat for wildland fires increase each year.



Captain Morrow helps command the Cielito Lindo fire scene



LDCFM redefines the look of emergency care

New Ambulance Design

In 2023, LDCFM debuted a bold new color scheme on the two newest medic units, marking the start of a department-wide transition away from the traditional red and white that has adorned emergency apparatus for nearly two decades. By 2024, LDCFM will welcome the first matching black and red firetruck, Quint 3.

Designed by a dedicated internal committee, this refreshed look aims to boost morale and enhance public recognition of the department. We're excited to share our new design and hope you love it as much as we do!

LDCFM Expands It's Operations Footprint through 2024 Budget Planning

In the Spring of 2023, LDCFM conducted a study on daily operations staffing using industry best practices, including a method outlined by the San Francisco Fire Department. The analysis focused on benefit time use and calculated a "relief factor" to determine the minimum staffing needed to fully staff all emergency response units. As a result, it was determined that adding five firefighter positions would align the workforce with actual daily staffing needs, reducing overtime costs and mandatory drafting. These additional FTEs, awarded through the 2024 budget process, were expected to improve overall personnel health, wellness, and decrease sick time usage.



PREVENTION DIVISION

The Prevention Division is managed by the Division Chief of Prevention and supported by a Captain and Lieutenant.

The primary goal of the Prevention Division is to reduce the incidence and severity of preventable injuries and fire loss through public education, code inspections, plan reviews, and fire investigations.



PREVENTION DIVISION

Fire Prevention Week Participation

LDCFM extends heartfelt thanks to the National Fire Protection Association (NFPA) and Domino's® for the opportunity to participate in last year's Fire Prevention Week pizza delivery and smoke alarm check. During the event, LDCFM and Domino's® delivered several pizzas and were pleased to find that every dwelling had functioning smoke alarms.

Additionally, LDCFM was able to install smoke alarms for one family, enhancing their safety.

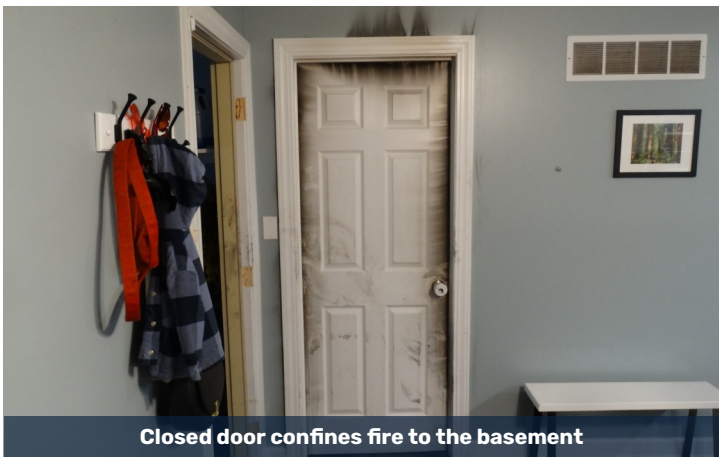


Crew poses in front of Domino's on 23rd St. sign

Fire Safety: The Power of Closed Doors

A house fire that originated in a residential basement vividly underscores the importance of a simple yet life-saving practice: closing your bedroom doors when you sleep. Because of synthetic materials such as those found in furniture, and construction, fire spreads incredibly fast.

- Closed doors create a barrier against carbon monoxide, smoke, and flame spread.
- Fire is getting faster, seconds count in emergencies.
- Research shows a closed door can mean the difference between 1,000 degrees and 100 degrees in the event of a fire. Trust us, you don't want to be on the side that's 1,000 degrees.



Closed door confines fire to the basement

LDCFM Home Safety Program

We recognize and appreciate Cottin's Hardware & Rental kindness and generosity for their donation of carbon monoxide alarms to our Home Safety Program.

This program, a collaborative effort, was established to conduct home fire safety inspections and provide smoke and carbon monoxide alarms at no cost to homeowners in our community. Together, we work to enhance the safety and well-being of our residents.



Chief King accepts donated carbon monoxide alarms

PREVENTION SERVICES HIGHLIGHTS



2

NEWLY PROMOTED
FIRE INVESTIGATORS



7

ARSON INVESTIGATION
ARRESTS



66

FIRES
INVESTIGATED



4,238

ANNUAL
INSPECTIONS



441

CODE COMPLIANCE
PERMIT INSPECTIONS



612

BUILDING PLANS
REVIEWED

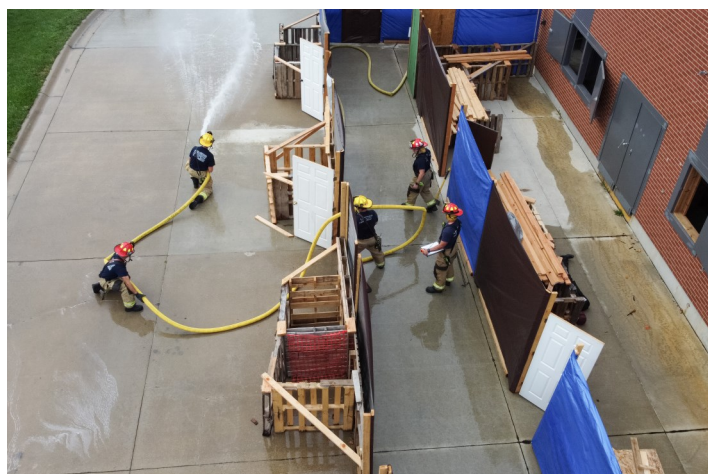




TRAINING DIVISION

The Training Division is managed by the Division Chief of Training and supported by a Captain and Lieutenant.

The goal of the Training Division is to provide competency-based training for department employees, county EMS first responders, and to facilitate public awareness.



LDCFM Enhances Training with Realistic Drills

LDCFM had the incredible opportunity to conduct high-intensity fire training at the Tri-Delta sorority house before its renovation by Mar-Lan Construction. This training, spread over several weeks, included forcible entry, search and rescue, vent-enter-search, coordinated ventilation, and fire attack.

The extended timeframe allowed for multi-company drills, providing a unique and invaluable opportunity for collaborative training. It's crucial for our team to engage in rigorous, realistic training to ensure the highest level of protection for our citizens.



Reviewing performance after rescue drill



Breaking glass to create a vent opening



Making entry to fight a simulated 3rd-floor fire

Training with KFRTI in Trench Rescue

Ideal fall weather set the stage for outdoor training as LDCFM completed a rigorous four-day Trench Rescue certification course in collaboration with the Kansas Fire & Rescue Training Institute (KFRTI).



An 8-foot deep trench was used to provide realistic rescue training

Though uncommon, trench collapses pose severe dangers to both rescuers and victims. The accompanying photo highlights the coordinated teamwork essential for these complex operations.

Hazards encountered during these incidents include potential further collapses and the presence of hazardous gases. Safety remains the top priority, underscoring the critical need for comprehensive training in these infrequent yet high-risk scenarios. Every participant has a crucial role to play during a trench rescue.

High-Rise Fire Response Training

LDCFM crews enhanced their skills in responding to high-rise fires. These structures, including office buildings, hotels, dormitories, and other large facilities, require firefighters to connect hoses to standpipes in stairwells rather than directly to the fire engine. These responses differ significantly from typical house fires, involving various additional tasks and the use of different hose sizes and pressures.

To ensure readiness, the training included the construction of a simulated apartment building hallway outside the LDCFM training tower. This setup allowed crews to practice choreographing the many interrelated tasks required to extinguish high-rise fires and safeguard occupants.



Firefighters practice moving down a simulated apartment hallway

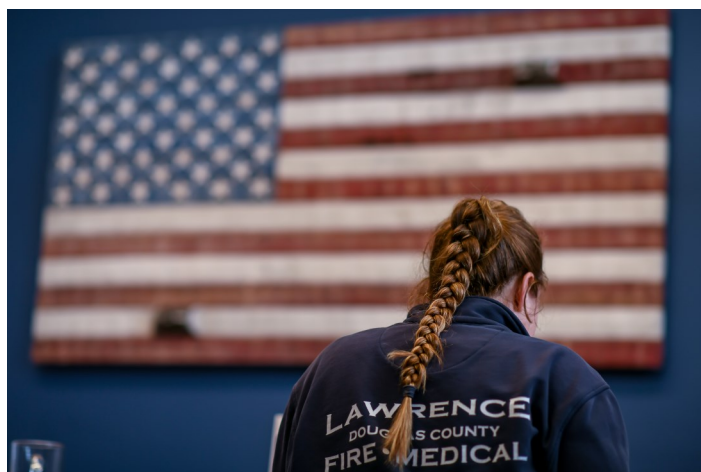




IAFF LOCAL 1596

Through 2023, the 140 plus members of the International Association of Firefighter (IAFF) Local 1596 represented various ranks and levels of seniority throughout LDCFM.

With unified efforts, the members continued their partnership with the City of Lawrence and LDCFM management in the pursuit of a shared vision of a more progressive and supportive fire and medical department while maintaining a superior level of service for our citizens.



Bolstering Emergency Staffing: IAFF Local 1596's Initiative for a Safer Community

Significant time and effort was spent renewing the processes in place to ensure there are enough firefighters and paramedics on duty at all times. Working with department management the membership redesigned staffing policies in an aim to reduce the number of instances of forced overtime shifts which had grown to an untenable amount in recent years. Additionally, Local 1596 spent substantial time in conversation with City leadership with the goal to address the need for more firefighters, paramedics and EMTs to keep up with the steady increase in emergency calls LDCFM has experienced. Through steady communication, and cooperative efforts with their employer, the members of IAFF Local 1596 continue not only to be a force for a fair workplace but a community partner in ensuring the citizens of Lawrence and Douglas county have the proper emergency resources needed for a safe community.

IAFF Local 1596's Charitable Efforts and Outreach

The members also continue their dedication to give back to the community they serve. In 2023, Lawrence Professional Firefighters Charitable Foundation, continued their partnership with Operation Warmth and provided coats to children in need in Lawrence. With the support of community members, the Charitable Foundation has purchased and donated over \$12,000 in coats for area children since 2018. Members also spent time as camp counselors for children living with neuromuscular disease cases at Camp Milton in Linwood, Kansas. As a week-long overnight camp, Camp Milton works to provide these children with a traditional summer camp experience.

Kansas State Council of Firefighters Conference

Local 1596 also spent time building relationships with other locals in the state as well as improved the working conditions of firefighters statewide and hosted the 77th annual Kansas State Council of Firefighters Conference. During the conference, firefighters, paramedics, EMT's, and IAFF affiliates from the state came to Lawrence to discuss the latest in health and wellness in the Fire and EMS service. During this conference IAFF Local 1596 and LDCFM member, Crosbi Schmidt, received the Mark Blair Union Firefighter of the year award for her work in numerous collaborative department and IAFF team programs including health and safety team, EMS team, and peer support team.



Lt. Lynch speaks at City Commission



FF/PM Ramirez handing out winter coats



FF/PM Shelton at Camp Milton



LDCFM GRANT ACHIEVEMENTS

In 2023, LDCFM was fortunate to receive two significant grants: an FEMA's Assistance to Firefighters Grant (AFG) grant and an Local Safety and Security Equipment (LSSE) grant, both of which will support critical enhancements to our department.

Additionally, the department continued the implementation of the AFG grant awarded in 2022, further advancing our Blue Card Command System training project.



LDCFM GRANT ACHIEVEMENTS

Grant Award for Wildland Firefighting Enhancements

LDCFM was awarded a grant from the Kansas Governor's Office Grants Program to bolster its wildland firefighting capabilities. The award amounted to \$119,430 in state funds. This grant, part of the Local Safety and Security Equipment (LSSE) Grant Program, provided LDCFM with essential funding to purchase wildland personal protective equipment (PPE), additional tools, and specialized hose designed for the suppression of wildland fires.



LDCFM firefighters training in live wildland fire suppression scenarios.

LDCFM Fire Chief Rich Llewellyn emphasized the importance of this grant, stating: "Catastrophic wildfire isn't just a threat impacting rural communities; it's an issue that we have to be ready to face right here in Lawrence and Douglas County. Wildland firefighting is a specialized aspect of our job, and it's important that we have the proper equipment to do that work. Fighting wildland fires using the same gear as we do for structure fires is hard on our employees and limits their effectiveness."

AFG Grant: Enhancing Water Rescue Capabilities

In 2023, LDCFM was awarded FEMA's Assistance to Firefighters Grant (AFG) to equip and train a team for swift water and boat rescue operations. The \$158,909 in grant funds will be used to provide specialized training, ensuring team members meet National Fire Protection Association (NFPA) standards for water rescue operations. This will address critical gaps in LDCFM's current water rescue program, which has been hindered by limited resources and outdated training. With the increase in water-related emergencies, this investment is essential to enhance the effectiveness and safety of the rescue team and the community they serve.



Water rescue training on Clinton Lake.

AFG Grant: Blue Card Command System Enhances Operations

In 2022, LDCFM was awarded FEMA's AFG grant to implement the Blue Card Command System, a crucial initiative that began in 2023. This program addresses the need to improve our department's communication and incident command capabilities by providing training to members serving in command positions at various types of incidents. With only 27 of the 70 required members currently certified, enhancing our Blue Card-trained personnel is essential. By improving communication loops and risk management, this project will elevate our department's overall effectiveness and ensure safer, more coordinated responses in emergency situations. Through this process, the department also adopted the "train the trainer" philosophy to sustain and expand this critical education throughout the department, ensuring long-term improvement in our emergency response effectiveness.

The Blue Card Command System is a comprehensive incident management training and certification program designed for fire departments. It provides a standardized approach to managing emergency scenes, focusing on strategic decision-making, resource management, and operational safety. The system is built around the principles of the Incident Command System (ICS), enhancing the ability of incident commanders to effectively lead and coordinate emergency responses, improving the safety of personnel and the public.





ENGLEMAN ROOM DEDICATION

LDCFM dedicated Station No. 1's training room to recognize the service of LDCFM retiree, Lexie Engleman.

The dedication took place on Friday, June 30, at LDCFM's Station No. 1. Engleman, who retired from the department as Captain Engleman was joined by her family, friends, LDCFM retirees, and current LDCFM staff to commemorate and celebrate the recognition.



ENGLEMAN ROOM DEDICATION

In conjunction with the ceremony, a plaque was unveiled that will hang in the room to commemorate Captain (ret.) Engleman's service to the community. The text of the plaque is as follows:

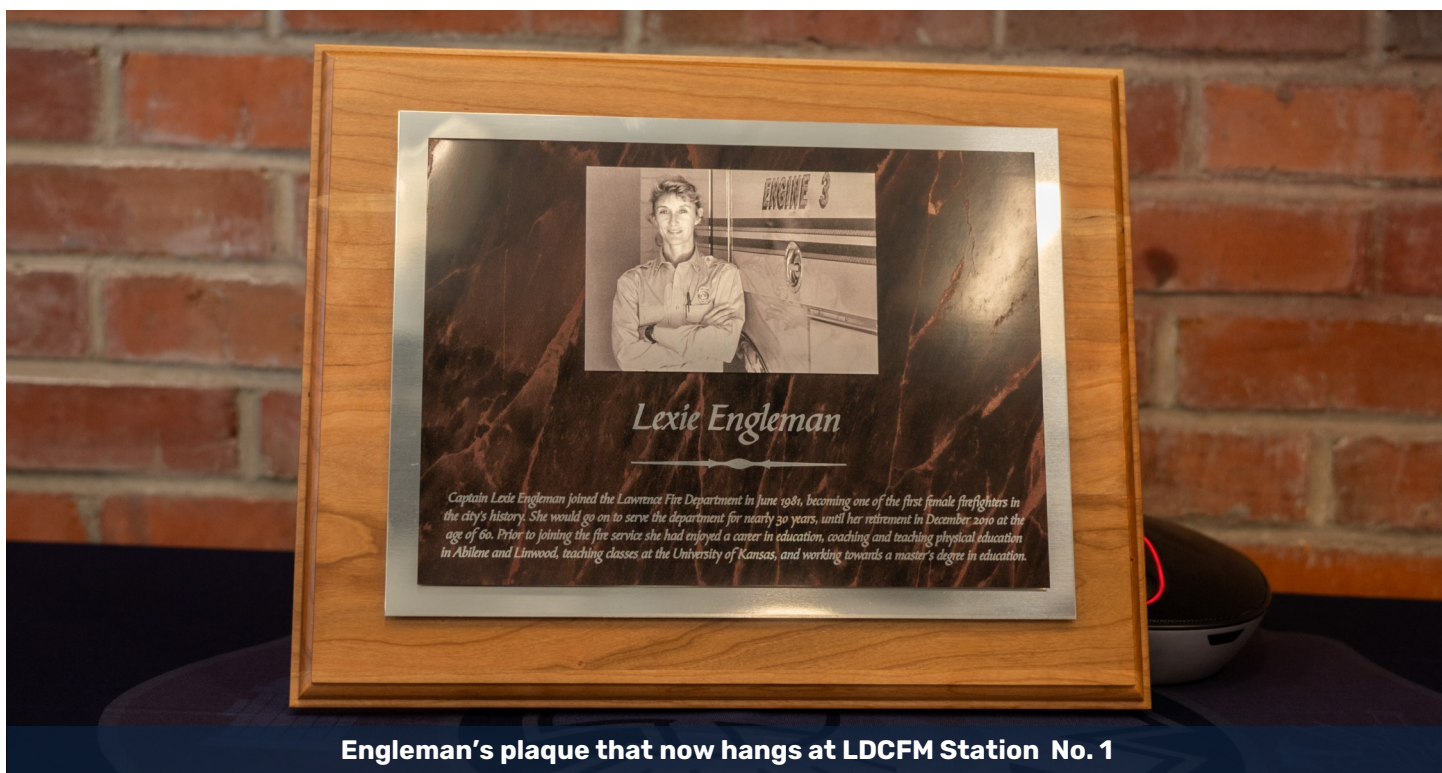
"Captain Lexie Engleman joined the Lawrence Fire Department in June 1981, becoming one of the first female firefighters in the city's history. She would go on to serve the department for nearly 30 years, until her retirement in December 2010 at the age of 60. Prior to joining the fire service she had enjoyed a career in education, coaching, and teaching physical education in Abilene and Linwood, teaching classes at the University of Kansas, and working towards a master's degree in education."



Engleman at her retirement ceremony in 2010



Engleman presenting at her room dedication ceremony



Engleman's plaque that now hangs at LDCFM Station No. 1





LDCFM HOSTS DR. DAVID GRIFFIN

In August, LDCFM was excited to partner with Haskell Indian Nations University in hosting Dr. David Griffin from the Charleston Fire Department of Charleston, SC. During this seminar, Dr. Griffin spoke about his study, *In Honor of the Charleston 9: A Study of Change Following Tragedy*. This talk presented lessons-learned following the 2007 Sofa Super Store Fire that resulted in the deaths of nine (9) Charleston firefighters.



LDCFM HOSTS DR. DAVID GRIFFIN



Presentation held at Haskell Indian Nations University



First responders listen intently to Dr. Griffin



Chief Llewellyn shares opening words

LDCFM had the honor of hosting Dr. David Griffin from the Charleston Fire Department from Charleston, SC. Dr. Griffin, who drove the first engine to respond to the tragic 2007 Sofa Super Store fire, shared his deeply personal journey of coping with the aftermath of an incident that claimed the lives of nine of his fellow firefighters.

During his presentation, Dr. Griffin provided gripping first-hand accounts of that harrowing day, complemented by footage and real-time radio traffic. He spoke candidly about the immense responsibility he felt for the recovery of both his beloved fire department and himself. The heavy toll this catastrophic event took on Dr. Griffin's life was evident, making his resilience and dedication all the more inspiring.

We are immensely grateful to Dr. Griffin for his visit and the opportunity to learn from his experiences. Dr. Griffin, you are always welcome in Lawrence, Kansas! We also extend our heartfelt thanks to Haskell Indian Nations University for graciously hosting this impactful event.





PROMOTIONS, RETIREMENTS, AND RECOGNITIONS

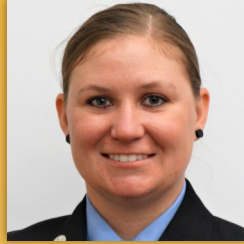
This next section highlights individual and group achievements within the LDCFM, celebrating promotions, honoring retirements, and recognizing special accomplishments of our dedicated team members.



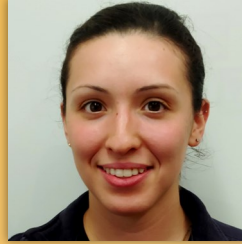
PROMOTIONS



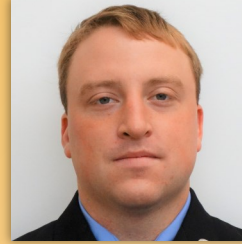
Samuel Goodwin
Fire Engineer Paramedic
Operations Division



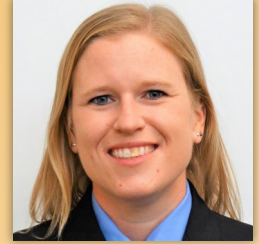
Hannah Somers
Fire Engineer AEMT
Operations Division



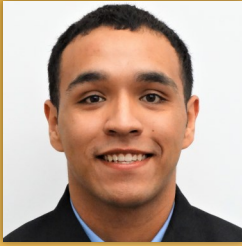
Jasmin Ramirez
Firefighter Paramedic
Operations Division



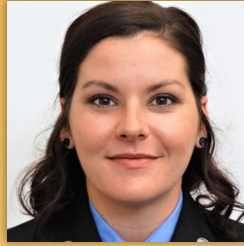
Nathan Heinen
Firefighter Paramedic
Operations Division



Jessica Shrewsbury
Fire Engineer Paramedic
Operations Division



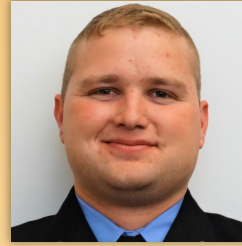
Jose Rodriguez
Fire Engineer AEMT
Operations Division



Crosbi Schmidt
Fire Engineer Paramedic
Operations Division



Alan Baur
Firefighter Paramedic
Operations Division



Dakota Nehl
Fire Engineer Paramedic
Operations Division



Dwayne Cole
Fire Engineer Paramedic
Operations Division



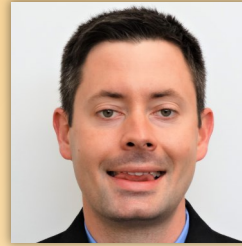
Adam Eudaly
Fire Engineer Paramedic
Operations Division



Nolan Parker
Firefighter Paramedic
Operations Division



Trevor Shelton
Firefighter Paramedic
Operations Division



Matthew Ploeger
Fire Engineer Paramedic
Operations Division



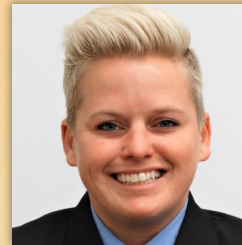
Simon Stephenson
Fire Engineer Paramedic
Operations Division



Justin Dollard
Fire Engineer Paramedic
Operations Division



Derek Schmidt
Fire Engineer Paramedic
Operations Division



Jennifer Persons
Fire Lieutenant AEMT
Operations Division



Redell Frazier
Fire Lieutenant Paramedic
Operations Division



James Barkley
Fire Captain
Operations Division



Jason Ray
Fire Captain
Prevention Division



Tyler Wade
Battalion Chief
Operations Division



Joseph Hardy
Division Chief
Training Division



Zoe Mays
Firefighter Paramedic
Operations Division



Grayson Johnson
Firefighter Paramedic
Operations Division

AWARDS AND RECOGNITIONS

Celebrating Professional Achievements and Certifications

Congratulations to the following first time designees through the Commission on Professional Credentialing (CPC) Center for Public Safety Excellence (CPSE).

- Chief Officer Rob Fleep - Chief Fire Officer (CFO)
- Chief Officer Tyler Wade - Chief Fire Officer (CFO)
- Chief Officer Zane Morgan - Chief Fire Officer (CFO)
- Captain Andy Flory - Fire Officer (FO)
- Engineer Paramedic Derek Schmidt - Fire Officer (FO)

These credentials are a testament to the hard work, commitment to professional growth, skill development, and proficiency to the delivery of all-hazard services to our community! It not only recognizes their expertise but also reflects the high standards of professionalism they uphold every day.



Honoring Our New Paramedic Graduates

Congratulations to our four LDCFM members who just graduated from paramedic school! Their dedication and newly acquired skills will undoubtedly strengthen our commitment to serving our community.

- Firefighter Paramedic Adam Eudaly
- Firefighter Paramedic Alan Baur
- Firefighter Paramedic Brian Rethman
- Firefighter Paramedic Dwayne Cole
- Firefighter Paramedic Elliot Johnson
- Firefighter Paramedic Grayson Johnson
- Firefighter Paramedic Jasmin Ramirez
- Firefighter Paramedic Kody Nehl
- Firefighter Paramedic Nathan Heinen
- Firefighter Paramedic Nolan Parker
- Firefighter Paramedic Trevor Shelton
- Firefighter Paramedic Zoe Mays



LDCFM Leaders in Action: Enhancing Community Engagement through Leadership Lawrence

In 2023, six members from LDCFM participated in the Leadership Lawrence is a professional development program by the Lawrence Chamber of Commerce, aimed at cultivating leadership skills and community involvement through a series of educational and interactive sessions.

- Fire Medical Data Analyst McKenzi Ezell
- Engineer Paramedic Brent Luedeke
- Lieutenant Paramedic Eric Lynch
- Captain Nick Simon
- Captain Jason Ray

LDCFM Enhances Expertise Through Executive Fire Officer Program

Congratulations to Captain Dennis on his graduation from the National Fire Academy's prestigious Executive Fire Officer Program (EFO)! This program is designed to prepare fire service leaders to recognize, create, and implement adaptive solutions to the complex problems facing modern communities.

LDCFM Participant Excels in Certified Public Manager Program

LDCFM proudly had one participant, Battalion Chief Tyler Wade, complete the prestigious Heartland Certified Public Manager® (CPM) program. Offered by the University of Kansas Public Management Center, this nationally accredited program enhances the leadership and management skills of public service professionals through rigorous coursework and capstone projects.



RETIREMENTS / ACKNOWLEDGEMENTS OF SERVICE



Engineer Jack Angell
29 Years of Service



Captain Earl Barnes
26 Years of Service



Engineer Silva Beach
29 Years of Service



Engineer Jason Williams
24 Years of Service



Engineer Richard Bull
28 Years of Service





LDCFM

LAWRENCE-DOUGLAS COUNTY FIRE MEDICAL

ISO CLASS 1 • INTERNATIONAL ACCREDITED AGENCY

www.lawrenceks.org/fire-medical



@LawrenceKSFireMedical

PulsePoint @LDCFM

